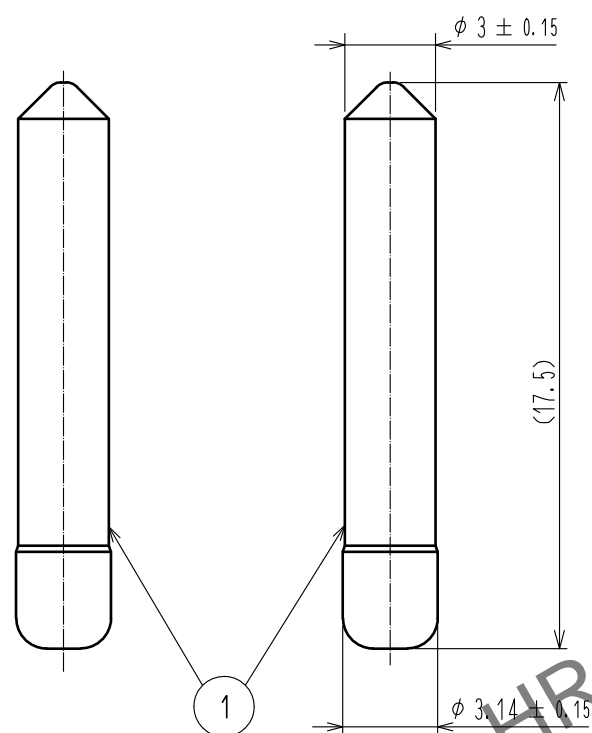
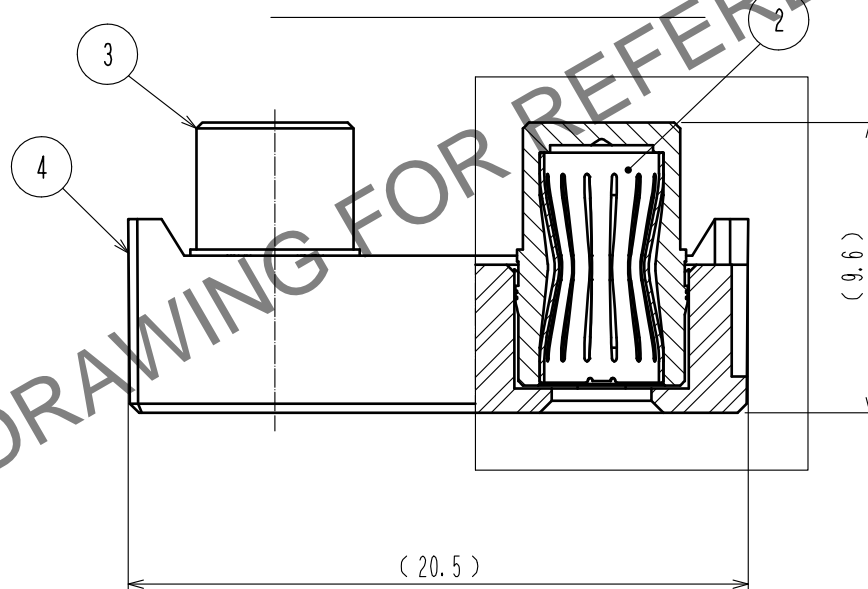


Apr.1.2024 Copyright 2024 HIROSE ELECTRIC CO., LTD. All Rights Reserved.  
In case of consideration for using Automotive equipment / device which demand high reliability, kindly contact our sales window correspondents.

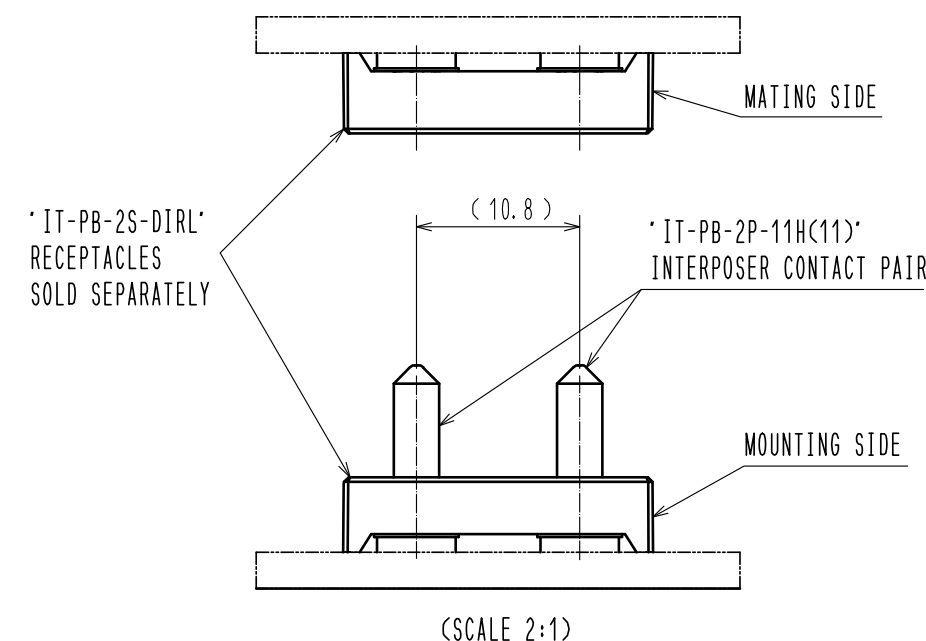
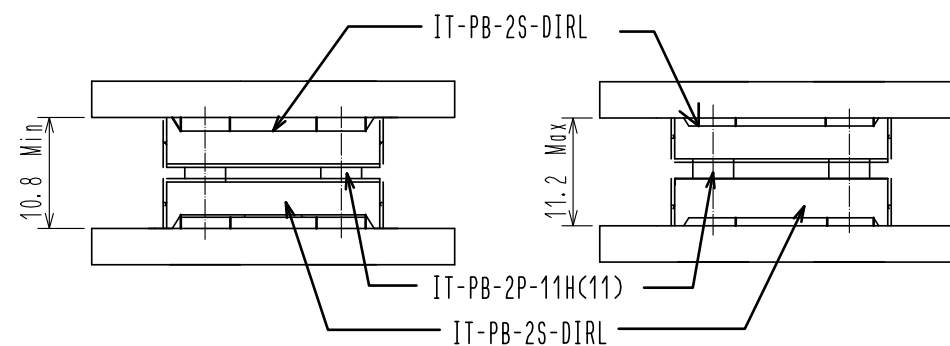
50 PAIRS PER TRAY  
(100 CONTACTS TOTAL)



8 7 1 PICK-UP JIG PER TRAY



5 PCB BOARD TO BOARD STACKING HEIGHT RANGE (SCALE FREE)



NOTES:

- 1 THE DIMENSIONS IN PARENTHESES ( ) ARE FOR REFERENCE.
- 2 PROLONGED EXPOSURE TO THE ATMOSPHERE MAY CAUSE THE SILVER PLATING TO TARNISH.
- 3 THE CONTACTS ARE SOLD IN PAIRS.
- 4 THIS PRODUCT IS RoHS COMPLIANT.
- 5 THIS PART CAN ACCOMMODATE THE PCB BOARD TO BOARD STACKING HEIGHT RANGE OF 11mm (10.8mm TO 11.2mm). FASTEN THE BOARDS WITHIN THIS HEIGHT RANGE USING SPACERS (OR OTHER MEANS).
- 6 THIS PRODUCT IS PACKAGED IN TRAYS. (50 PAIRS PER TRAY)
- 7 TO PREVENT SILVER TARNISH, DO NOT TOUCH THE CONTACTS WITH YOUR BARE HANDS. USE THE MATING RECEPTACLE THAT HAS BEEN PROVIDED AS A PICK-UP JIG.
- 8 EACH JIG IS INTENDED TO BE USED TO PICK UP THE CONTACTS IN ONE TRAY AND THEN BE DISCARDED.
- 9 EXPOSED CONTACT AREA MAY CAUSE SILVER TARNISHING.
- 10 PLEASE KEEP OUT A METAL PIECE FOR PREVENTING SHORT-CIRCUIT.

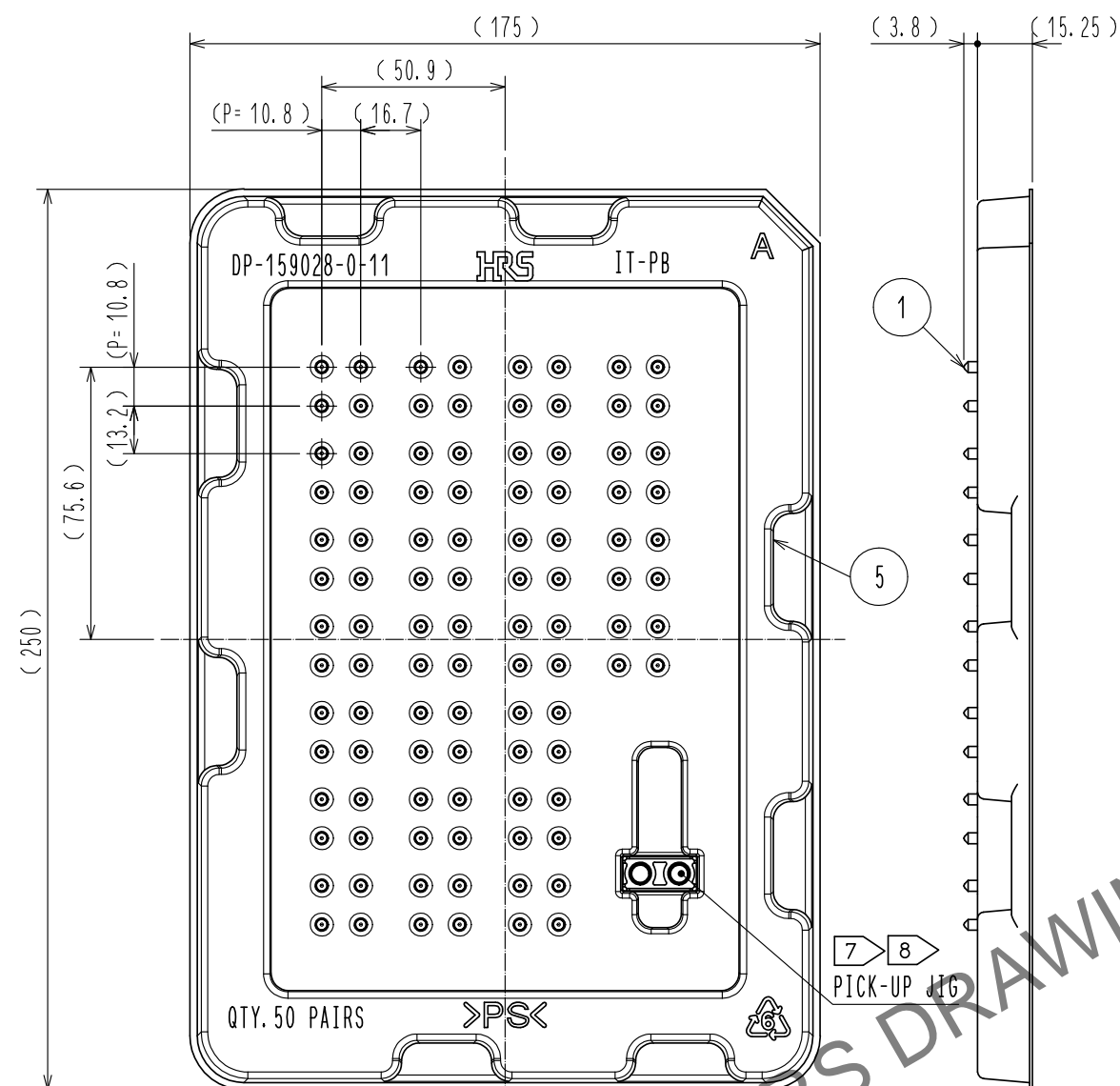
PICK-UP JIG	4	LCP	RED UL94V-0			
	3	BRASS	OVERPLATING: SILVER 5.1 μm MIN UNDERPLATING: NICKEL 3.5 μm MIN			
	2	COPPER ALLOY	CONTACT AREA: GOLD 0.76 μm MIN UNDERPLATING: NICKEL 1.3 μm MIN	6	POLYSTYRENE	<TRAY B>
	1	COPPER ALLOY	OVERPLATING: SILVER 5.1 μm MIN UNDERPLATING: NICKEL 1.5 μm MIN IN THE CONTACT AREA	5	POLYSTYRENE	<TRAY A>
NO.	MATERIAL	FINISH	REMARKS	NO.	MATERIAL	FINISH . REMARKS
UNITS mm		SCALE 4 : 1	COUNT 	DESCRIPTION OF REVISIONS		
			APPROVED : MK. EZAKI	15.12.03	DRAWING NO.	EDC-364206-11-00
			CHECED : MK. EZAKI	15.12.03	PART NO.	IT-PB-2P-11H(11)
			DESIGNED : NY. SHIMURA	15.12.03	CODE NO.	CL636-0633-0-11
			DRAWN : NY. SHIMURA	15.12.03		

HRS HIROSE ELECTRIC CO., LTD.

Apr.1.2024 Copyright 2024 HIROSE ELECTRIC CO., LTD. All Rights Reserved.  
In case of consideration for using Automotive equipment / device which demand high reliability, kindly contact our sales window correspondents.

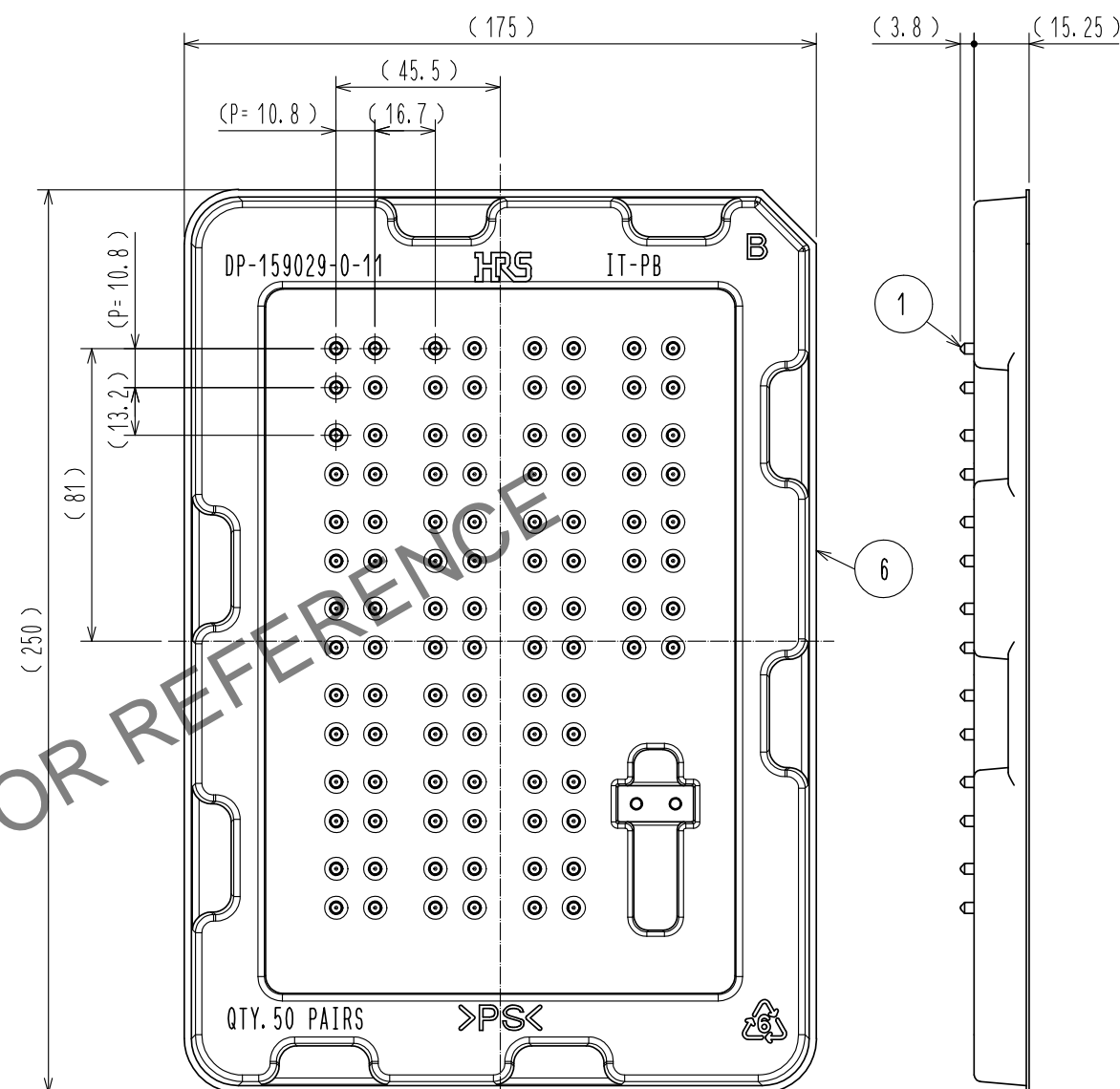
# TRAY PACKING DIMENSIONS (TRAY A)

(1:2)



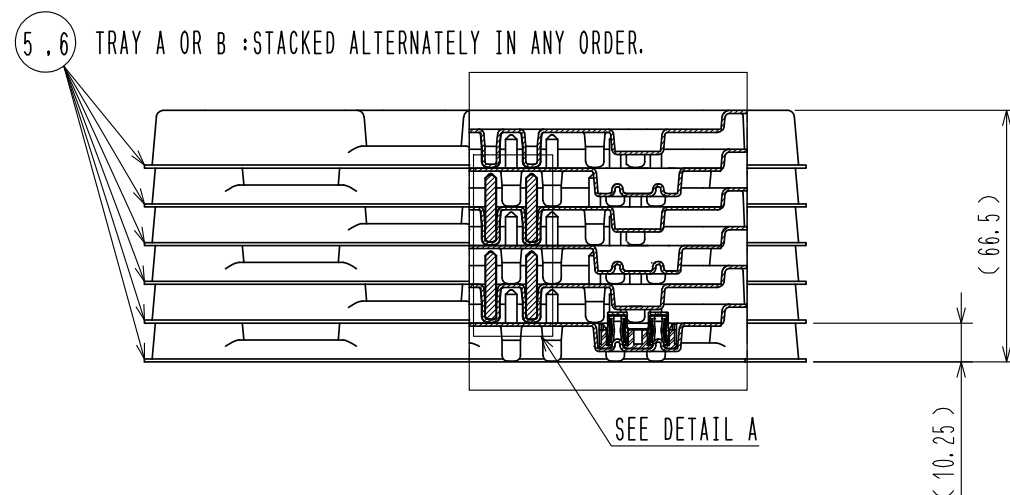
# TRAY PACKING DIMENSIONS (TRAY B)

(1:2)



# STACKED TRAY DIMENSION

(1:2)

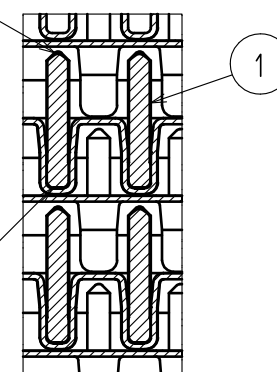


# DETAIL A

(1:1)

POINTED END MUST BE UP

LARGER END MUST BE DOWN



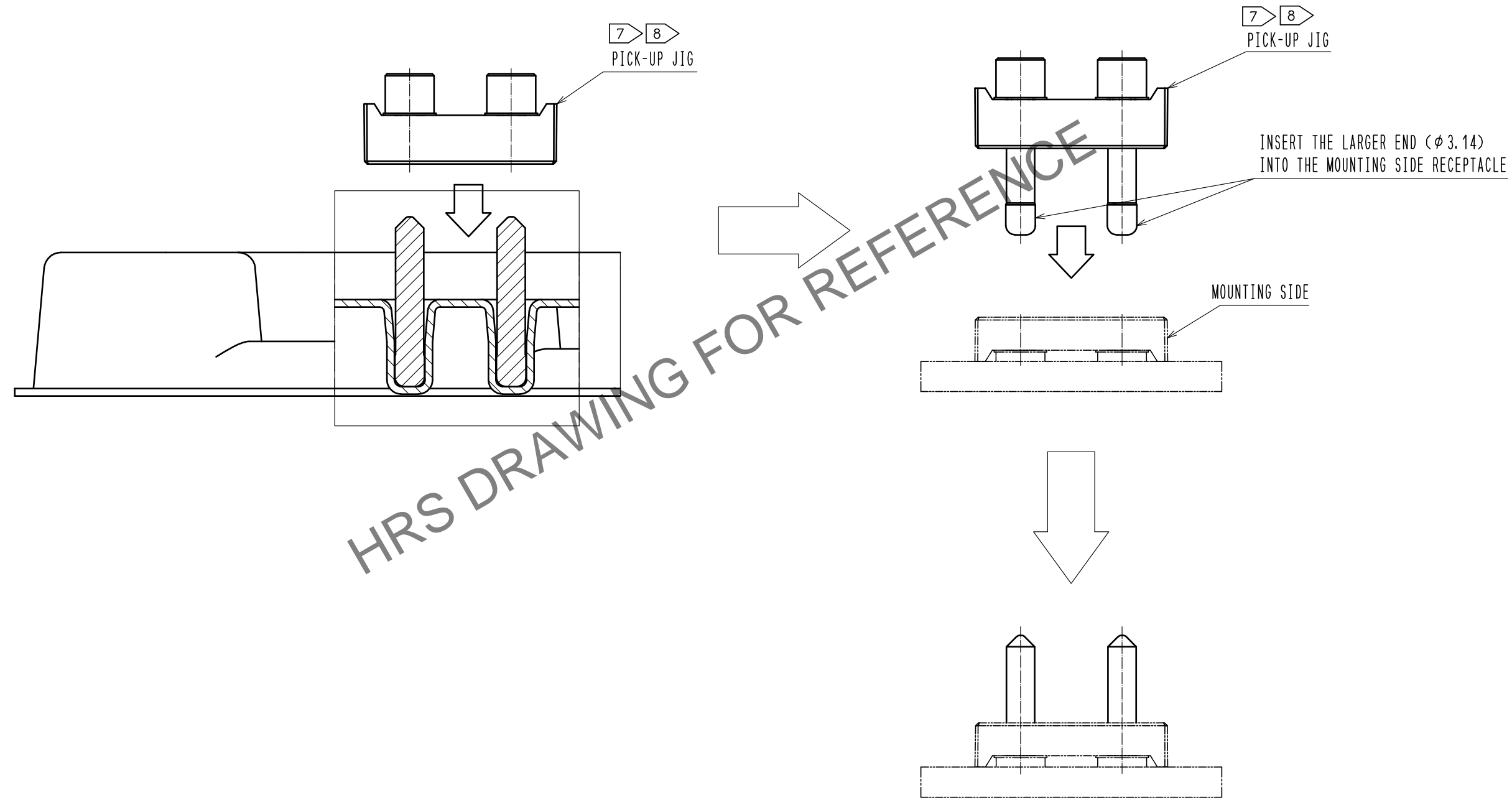
**HRS**

DRAWING NO.	EDC-364206-11-00
PART NO.	IT-PB-2P-11H(11)
CODE NO.	CL636-0633-0-11

Apr.1.2024 Copyright 2024 HIROSE ELECTRIC CO., LTD. All Rights Reserved.  
In case of consideration for using Automotive equipment / device which demand high reliability, kindly contact our sales window correspondents.

INTERPOSER CONTACT INSTALLATION PROCEDURE

(2:1)



HRS DRAWING FOR REFERENCE



DRAWING NO.	EDC-364206-11-00
PART NO.	IT-PB-2P-11H(11)
CODE NO.	CL636-0633-0-11