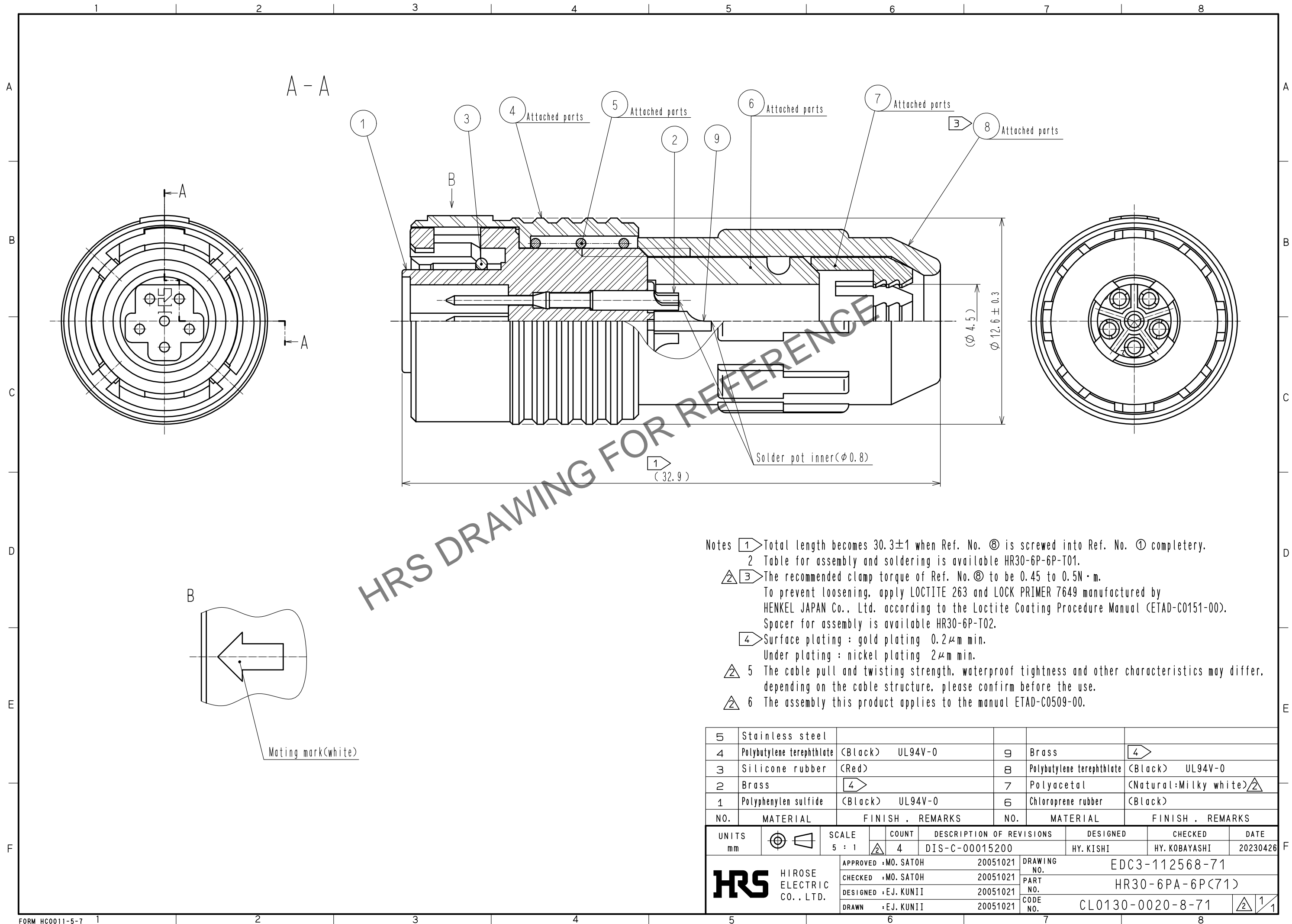


May.1.2024 Copyright 2024 HIROSE ELECTRIC CO., LTD. All Rights Reserved.
In case of consideration for using Automotive equipment / device which demand high reliability, kindly contact our sales window correspondents.



- Notes
- ① Total length becomes 30.3±1 when Ref. No. ⑧ is screwed into Ref. No. ① completely.
 - ② Table for assembly and soldering is available HR30-6P-6P-T01.
 - ③ The recommended clamp torque of Ref. No. ⑧ to be 0.45 to 0.5N·m.
To prevent loosening, apply LOCTITE 263 and LOCK PRIMER 7649 manufactured by HENKEL JAPAN Co., Ltd. according to the Loctite Coating Procedure Manual (ETAD-C0151-00).
Spacer for assembly is available HR30-6P-T02.
 - ④ Surface plating : gold plating 0.2μm min.
Under plating : nickel plating 2μm min.
 - ⑤ The cable pull and twisting strength, waterproof tightness and other characteristics may differ, depending on the cable structure, please confirm before the use.
 - ⑥ The assembly this product applies to the manual ETAD-C0509-00.

5	Stainless steel				
4	Polybutylene terephthlate	(Black) UL94V-0	9	Brass	④
3	Silicone rubber	(Red)	8	Polybutylene terephthlate	(Black) UL94V-0
2	Brass	④	7	Polyacetal	(Natural:Milky white)⑤
1	Polyphenylen sulfide	(Black) UL94V-0	6	Chloroprene rubber	(Black)
NO.	MATERIAL	FINISH . REMARKS	NO.	MATERIAL	FINISH . REMARKS
UNITS mm		SCALE 5 : 1	COUNT ④	DESCRIPTION OF REVISIONS DIS-C-00015200	DESIGNED HY. KISHI
		APPROVED : MO. SATOH	20051021	DRAWING NO.	EDC3-112568-71
		CHECKED : MO. SATOH	20051021	PART NO.	HR30-6PA-6P(71)
		DESIGNED : EJ. KUNII	20051021	CODE NO.	CL0130-0020-8-71
		DRAWN : EJ. KUNII	20051021		② 1/1
		DESIGNED	HY. KISHI	CHECKED	HY. KOBAYASHI
		DATE	20230426		