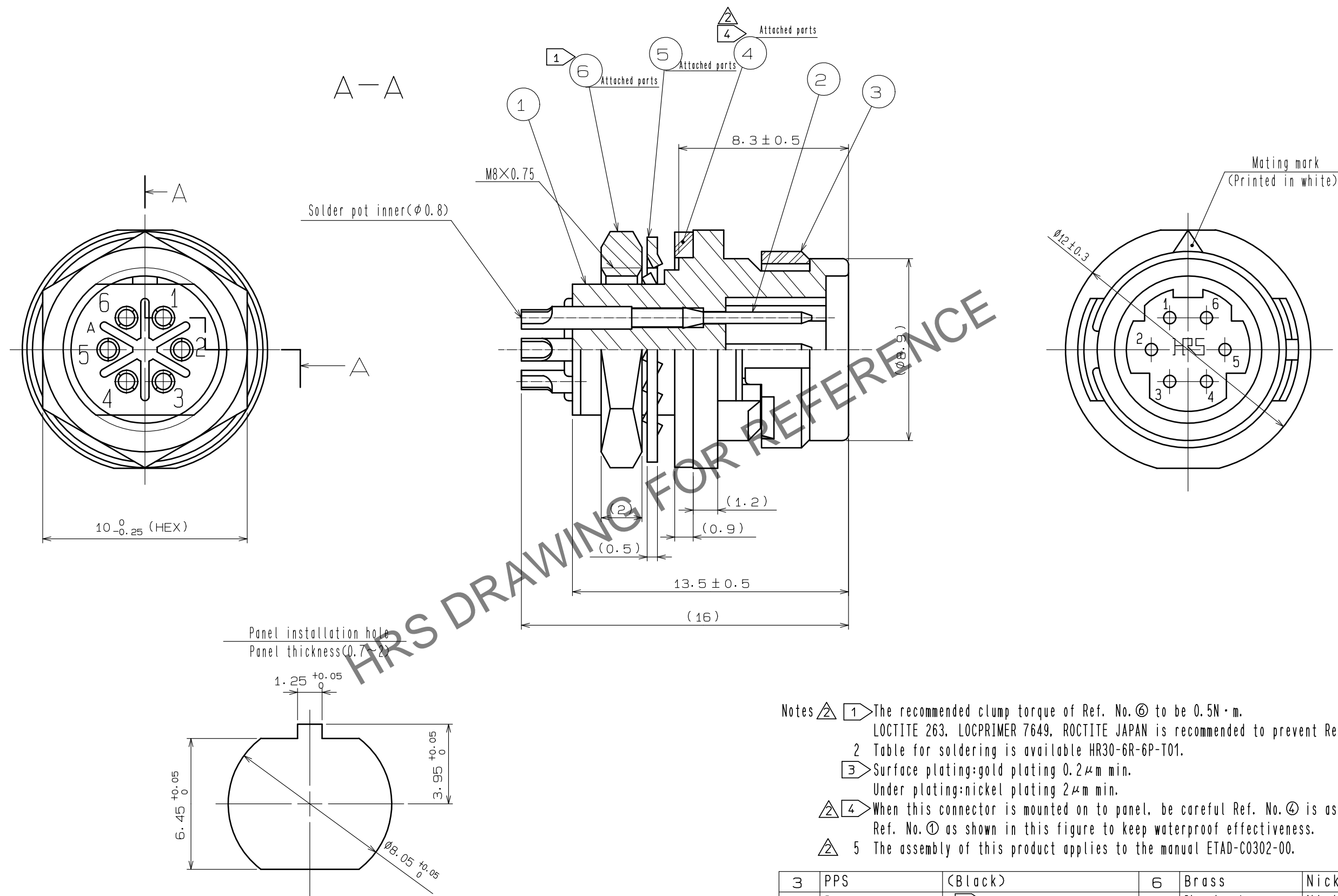
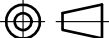




May.1.2024 Copyright 2024 HIROSE ELECTRIC CO., LTD. All Rights Reserved.  
In case of consideration for using Automotive equipment / device which demand high reliability, kindly contact our sales window correspondents.



- Notes
- ① The recommended clump torque of Ref. No. ⑥ to be 0.5N·m.  
LOCTITE 263, LOCPRIMER 7649, ROCTITE JAPAN is recommended to prevent Ref. No. ⑥ from loosening.
  - ② Table for soldering is available HR30-6R-6P-T01.
  - ③ Surface plating: gold plating 0.2 $\mu$ m min.  
Under plating: nickel plating 2 $\mu$ m min.
  - ④ When this connector is mounted on to panel, be careful Ref. No. ④ is assembled surely  
Ref. No. ① as shown in this figure to keep waterproof effectiveness.
  - ⑤ The assembly of this product applies to the manual ETAD-C0302-00.

3	PPS	(Black)	6	Brass	Nickel plating					
2	Brass	③	5	Phosphor bronze	Nickel plating					
1	PPS	(Black) UL94V-0	4	CR	(Black)					
NO.	MATERIAL	FINISH . REMARKS		NO.	MATERIAL	FINISH . REMARKS				
UNITS mm				SCALE 5 : 1		COUNT 4	DESCRIPTION OF REVISIONS DIS-C-00014886	DESIGNED HY. KISHI	CHECKED HY. KOBAYASHI	DATE 20230328
 HIROSE ELECTRIC CO., LTD.		APPROVED :MR. YOSHIDA		20050105		DRAWING NO.		EDC3-112023-71		
		CHECKED :MO. SATOH		20050105		PART NO.		HR30-6R-6P(71)		
		DESIGNED :YH. YAMADA		20050105		CODE NO.		CL0130-1009-0-71		
		DRAWN :YH. YAMADA		20050105				