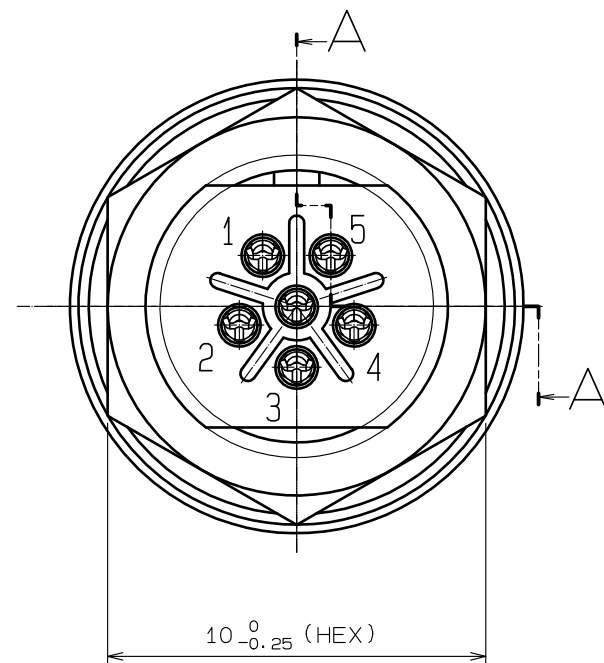
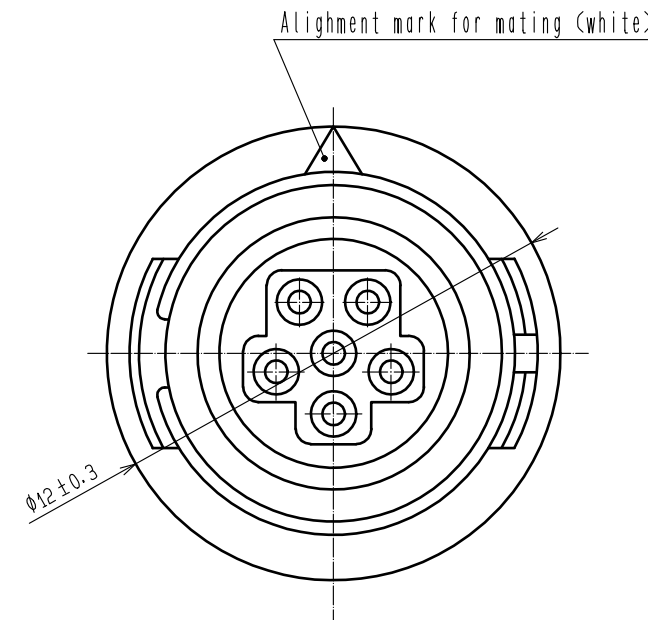
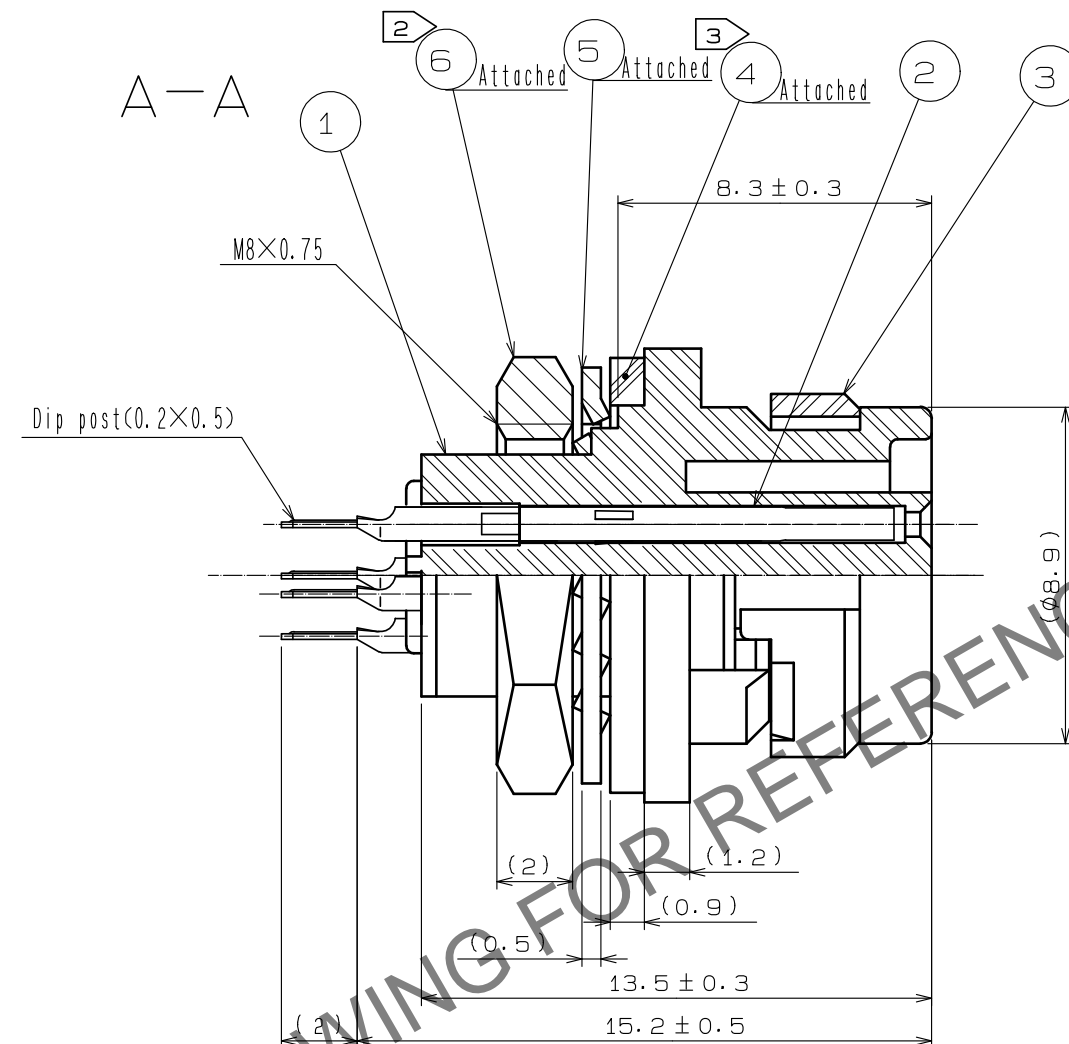
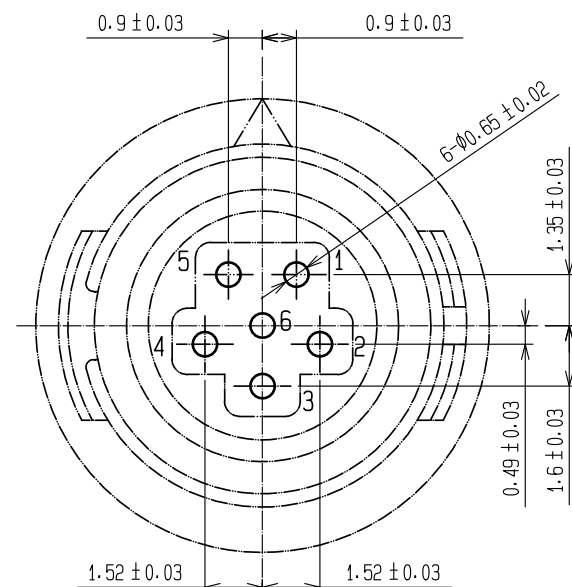


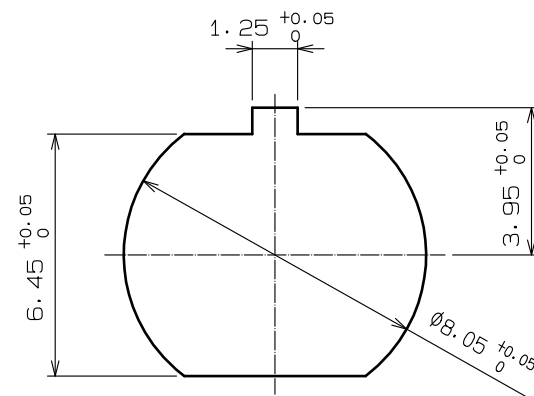
May.1.2024 Copyright 2024 HIROSE ELECTRIC CO., LTD. All Rights Reserved.
In case of consideration for using Automotive equipment / device which demand high reliability, kindly contact our sales window correspondents.



Dip post location dimensions in the view
from connector opening side
(Recommended maximum panel thickness : 1.2)



Panel installation hole
Panel thickness(0.7 to 2)



- Notes ① Finish of Ref.No. ②
Contact area : gold 0.2μm min.
Dip area : gold flash.
Under plating: nickel 2μm min.
- ② Recommended tightening torque of Ref.No. ⑥ : 0.5 N·m.
Loosened nut may cause the deterioration of water-resistance.
The use of loosening-preventive adhesive is strongly recommended.
Recommended thread locker : LOCTITE 263 , LOCKPRIMER 7649, HENKEL JAPAN LTD.
- ③ After Ref.No. ④ is inserted to Ref.No. ④ , Ref.No. ① is mounted on the panel.
Make sure that Ref.No. ④ does not have any factors to reduce water-resistance,
such as scratch, twist, pinching, or dust.
- ④ The assembly of this product applies to the manual ETAD-C0302-00.

3	PPS	(Black)	UL94V-0	6	Brass	Nickel plating
2	Copper alloy	1		5	Phosphor bronze	Nickel plating
1	PPS	(Black)	UL94V-0	4	CR	(Black)
NO.	MATERIAL	FINISH . REMARKS		NO.	MATERIAL	FINISH . REMARKS

UNITS mm		SCALE 5 : 1		COUNT 2	DESCRIPTION OF REVISIONS DIS-C-00014887	DESIGNED HY. KISHI	CHECKED HY. KOBAYASHI	DATE 20230328
-------------	--	----------------	--	------------	--	-----------------------	--------------------------	------------------

	HIROSE ELECTRIC CO., LTD.	APPROVED :MO. SATOH	20051021	DRAWING NO.	EDC3-113559-71		
		CHECKED :MO. SATOH	20051021	PART NO.	HR30-6R-6SD(71)		
		DESIGNED :EJ. KUNII	20051021	CODE NO.	CL0130-1021-6-71		
		DRAWN :EJ. KUNII	20051021				