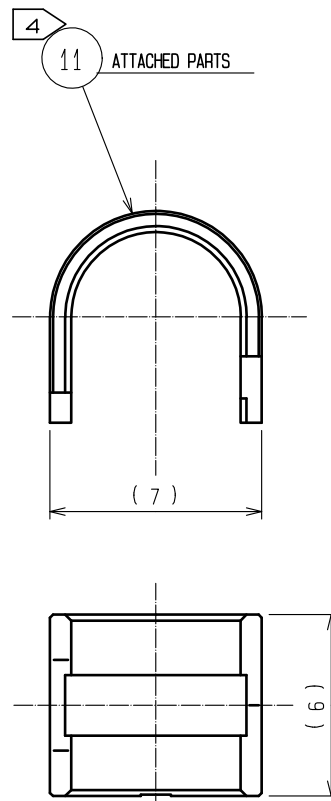
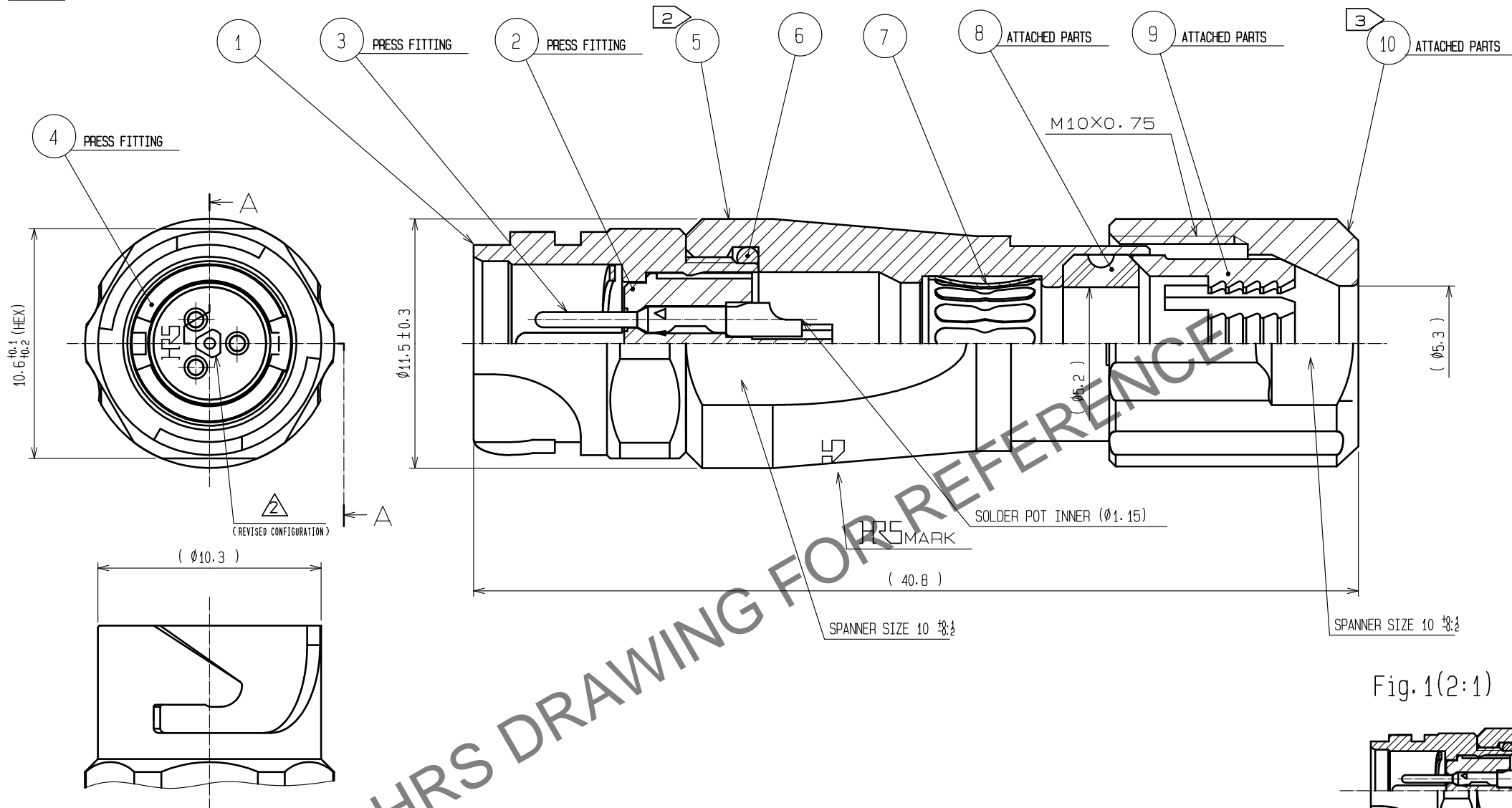
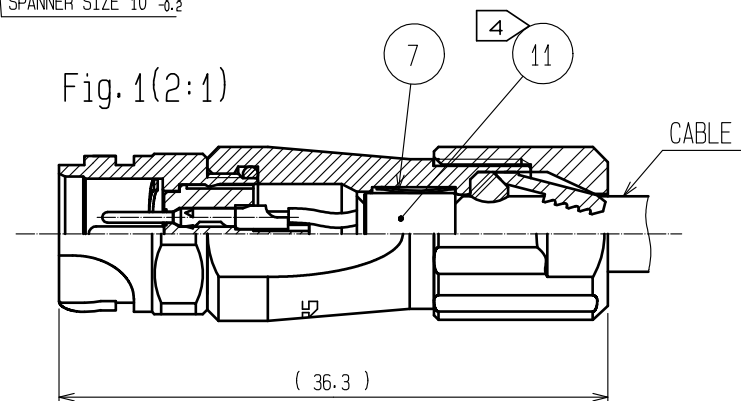

$$A - A$$



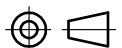
Fig. 1(2:1)



NOTES

- ① PLATING(REF.NO. ③)
CONTACT AREA : GOLD 0.2μm min
OTHERS : GOLD AND NICKEL
UNDER PLATING : NICKEL 2μm min
- ② THE RECOMMENDED CLAMP TORQUE OF REF.NO. ⑤ TO BE 1 TO 1.5N·m.
THREAD LOCKER TO THE THREADED PORTION OF REF.NO. ④ IS RECOMMENDED TO PREVENT REF.NO. ⑤ FROM LOOSING.
- ③ RECOMMENDED THREAD LOCKER:LOCTITE 263, HENKEL JAPAN LTD.
- ③ THE RECOMMENDED CLAMP TORQUE OF REF.NO. ⑩ TO BE 0.8 TO 1N·m.
THREAD LOCKER AND LOCK PRIMER TO THE THREADED PORTION M10X0.75 OF REF.NO. ⑤ IS RECOMMENDED TO PREVENT REF.NO. ⑩ FROM LOOSING.
- ③ RECOMMENDED THREAD LOCKER AND LOCK PRIMER : LOCTITE 263, LOCK PRIMER 7649, HENKEL JAPAN LTD.
- ④ FASTEN REF.NO.⑪ TO THE CABLE WITH THE CABLE CRIMPING TOOL.
AND MAKE REF.NO.⑪ CONTACT WITH REF.NO.⑦ (REFER TO Fig.1).
REFER TO THE TECHNICAL SPECIFICATION ATAD-C0099 FOR DETAILS.
APPLICABLE CABLE CRIMPING TOOL : HR10A-TC-02(CL150-0041-2)(THE HOLE DIAMETER FOR CRIMPING:φ5.3)
- ⑤ Fig.2 SHOWS THE APPEARANCE AFTER ASSEMBLY.
- 6 ROTATION EXAMPLES OF REF. NOS.⑤ AND⑩ TO ④ ARE SHOWN.
- 7 APPLICABLE CABLE ASSEMBLY FIXTURE : LF07BJ-T01(CL150-0233-3)
CABLE ASSEMBLY FIXTURE IS USED AS A RECEPTACLE STAND OF EXTRACT
AND THE PART No.④ OF AN ASSEMBLY.

6	CHLOROPRENE RUBBER	(BLACK)			
5	ZINC ALLOY	NICKEL PLATING	11	BRASS	NICKEL PLATING
4	PHOSPHOR BRONZE	NICKEL PLATING	10	PPS	(NATURAL・BROWN) UL94V-0
3	COPPER ALLOY	1	9	POLYAMIDE	(NATURAL・MILKY WHITE) UL94V-0
2	PPS	(BLACK) UL94V-0	8	CHLOROPRENE RUBBER	(BLACK)
1	ZINC ALLOY	NICKEL PLATING	7	PHOSPHOR BRONZE	NICKEL PLATING
NO.	MATERIAL	FINISH , REMARKS	NO.	MATERIAL	FINISH , REMARKS

 HIROSE ELECTRIC CO., LTD.	UNITS mm		SCALE 4 : 1	COUNT 2 3	DESCRIPTION OF REVISIONS DIS-C-00001700	DESIGNED HY. KISHI	CHECKED HY. KOBAYASHI	DATE 17. 08. 11
	APPROVED :MR. YOSHIDA		05. 01. 05		DRAWING NO. EDC3-114150-00			
	CHECKED :MO. SATOH		05. 01. 05		PART NO. LF07WBJ-3P			
	DESIGNED :YH. YAMADA		05. 01. 05		CODE NO. CL136-2003-8-00			
	DRAWN :YH. YAMADA		05. 01. 05		