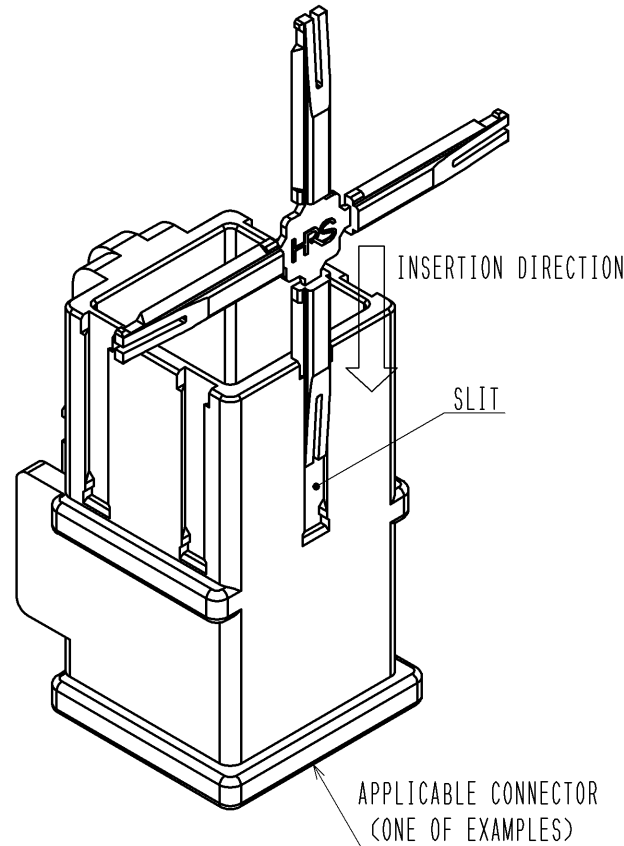


Apr.1.2024 Copyright 2024 HIROSE ELECTRIC CO., LTD. All Rights Reserved.
In case of consideration for using Automotive equipment / device which demand high reliability, kindly contact our sales window correspondents.

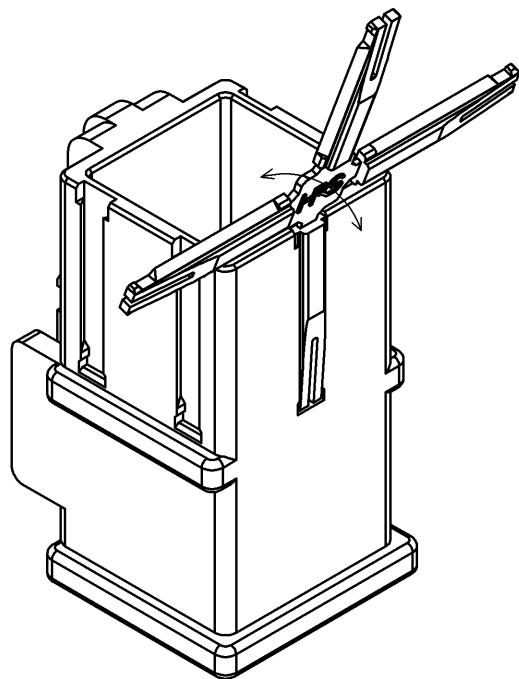
HOW TO ASSEMBLY / REMOVAL

ASSEMBLY

①INSERT THE KEY TO THE SLIT OF APPLICABLE CONNECTOR TO THE END UNTIL HEARING CLICK SOUND. MAKE SURE THAT THE KEY IS COMPLETELY FIXED, BY LIGHTLY PULLING IT UP AFTER INSERTION.

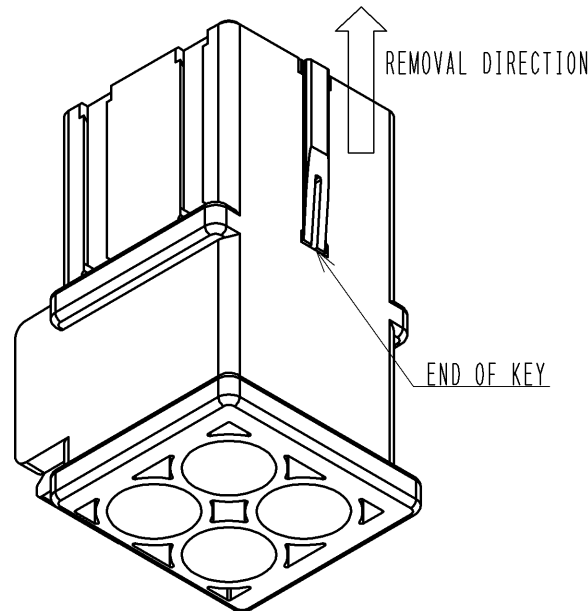


②HOLD THE HAND GRIP WITH HRS LOGO ON IT AND MOVE IT TO BACK AND FORTH TO BREAK THE KEY OFF AT THE NOTCH.

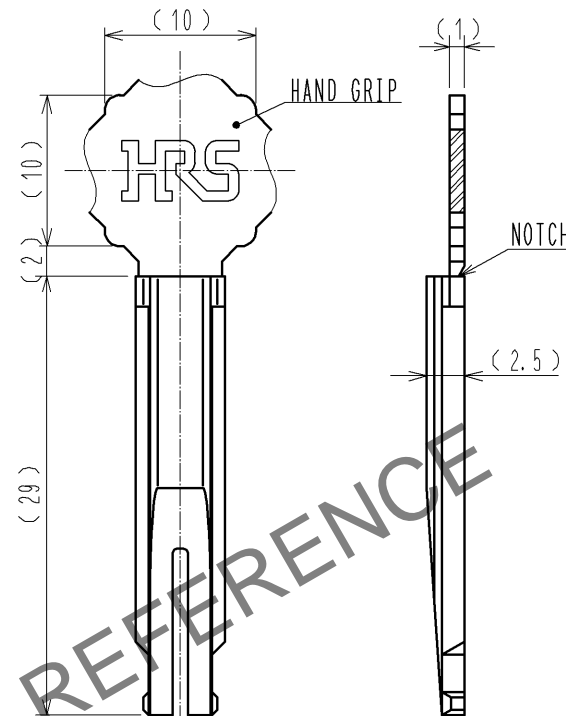


REMOVAL

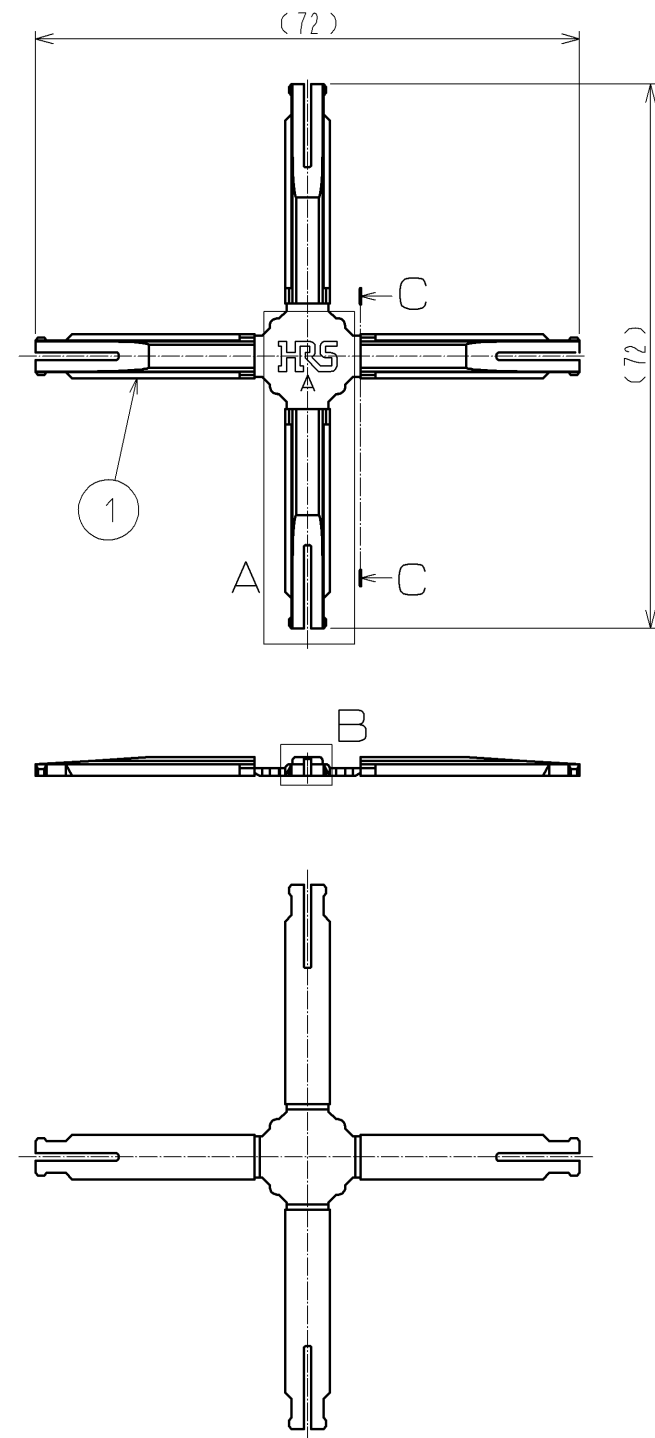
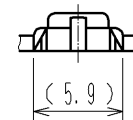
①REMOVE THE KEY BY APPLYING THE FORCE TO THE END OF KEY WITH FLATHEAD SCREWDRIVER TOWARD THE REMOVAL DIRECTION AS SHOWN. FOR REUSE OF THE KEY AFTER REMOVAL, CHECK THAT THERE IS NO DAMAGE ON THE KEY.



A (2:1) C-C (2:1)



B (2:1)



NOTES 1 25 UNITS (100 PCS. OF KEY) / PACKAGE

2 KEY SEPARATED FROM THE HAND GRIP WITH VIBRATION OR SHOCK DURING DELIVERY IS ALSO ACCEPTABLE TO USE.

3 REFER TO ASSEMBLY PROCEDURE AND HANDLING MANUAL (ATAD-C0222) FOR THE ASSEMBLY OF THIS PRODUCT.

1	PBT	UL94V-0	(WHITE)					
NO.	MATERIAL	FINISH	REMARKS	NO.	MATERIAL	FINISH	REMARKS	
UNITS mm		SCALE 1:1	COUNT 1	DESCRIPTION OF REVISIONS	DESIGNED	CHECKED	DATE	
HIROSE ELECTRIC CO., LTD.				APPROVED : SU. OBARA	11.04.01	DRAWING NO. EDC3-117066-00		
				CHECKED : HY. KOBAYASHI	11.04.01	PART NO. EM-GK		
				DESIGNED : HN. TANAKA	11.04.01	CODE NO. CL138-0026-5-00		
				DRAWN : YS. SAKODA	11.03.31			