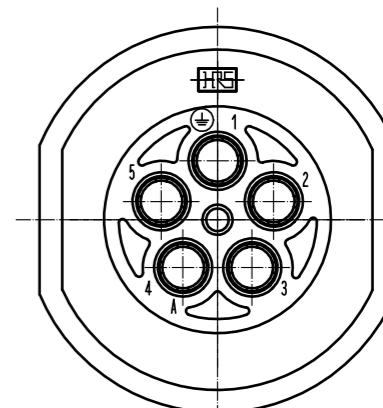
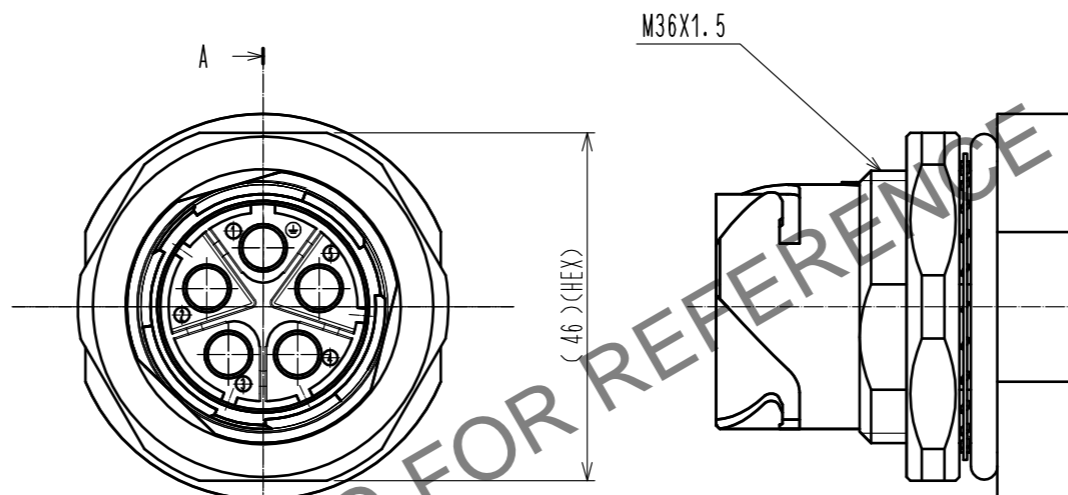
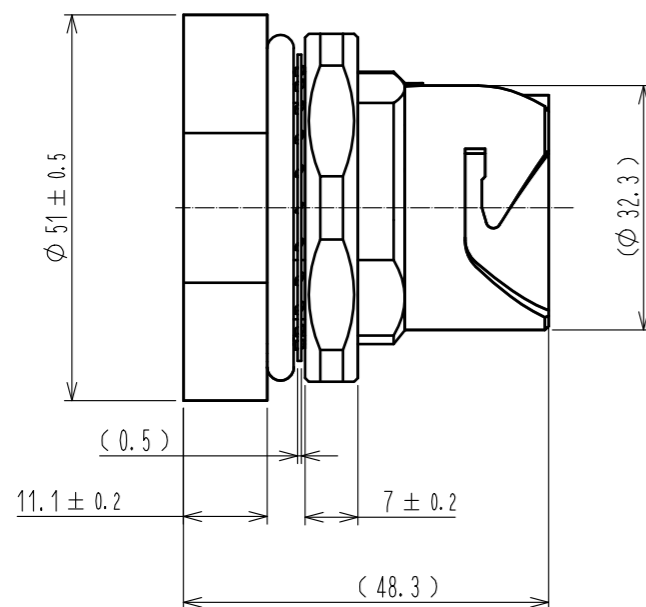
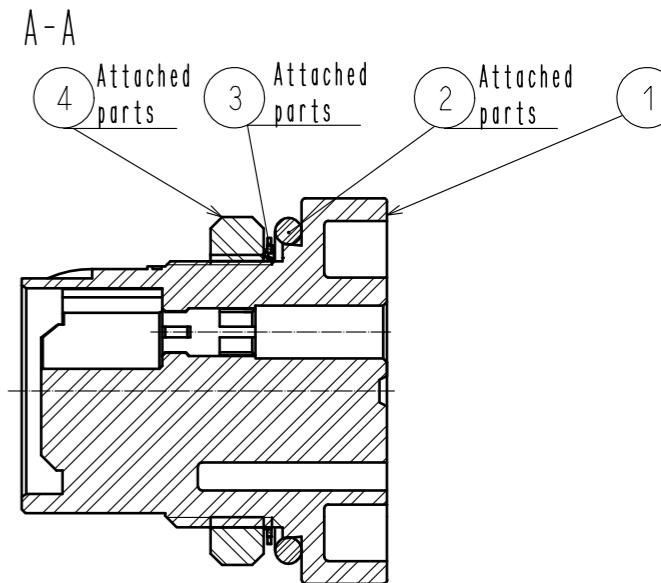
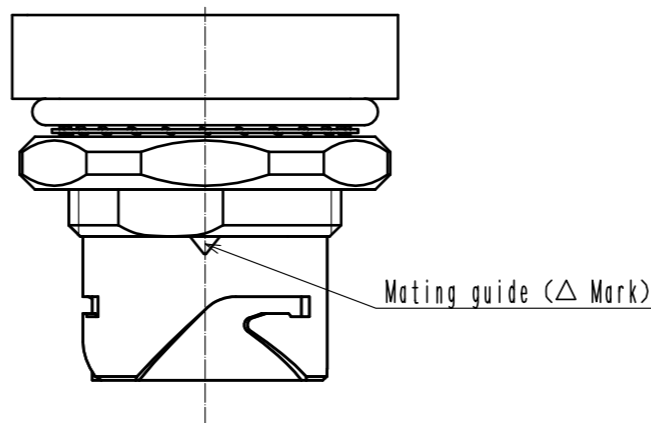
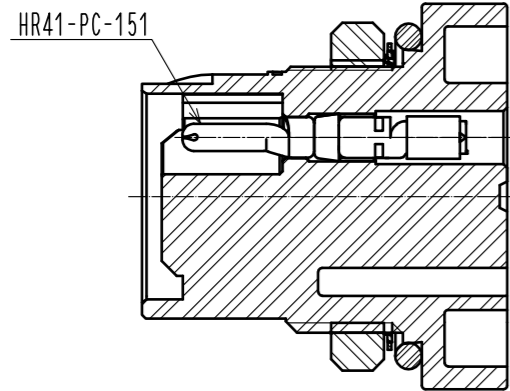


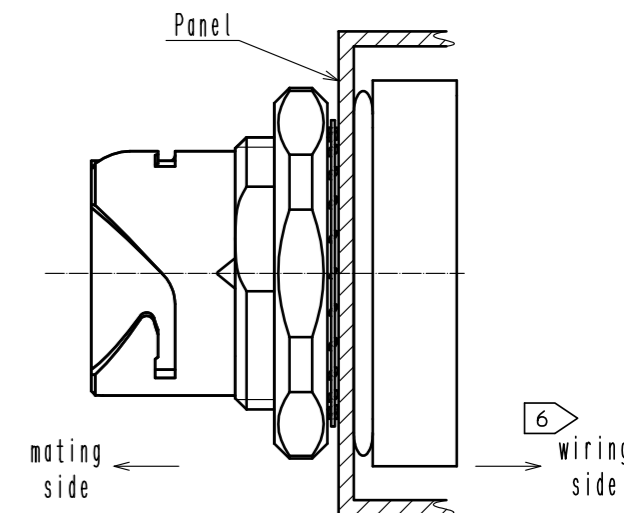
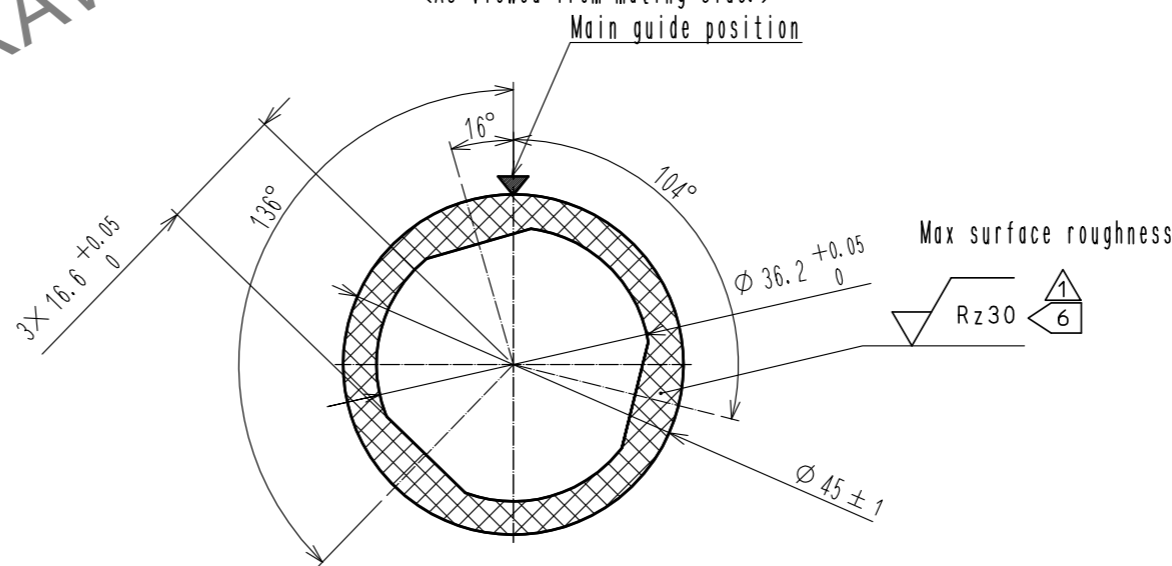
May.1.2024 Copyright 2024 HIROSE ELECTRIC CO., LTD. All Rights Reserved.  
In case of consideration for using Automotive equipment / device which demand high reliability, kindly contact our sales window correspondents.

1 Fig.1 The state applicable contact assembled



4 Fig.2 The recommendd panel dimention. (t=5.5(MAX))  
(As viewed from mating side.)

4 Fig.3 The state applicable connector set up.



- Notes
- Fig.1 shows the state applicable contact assembled applicable crimping contact:HR41-PC-151
  - Applicable crimp contact extraction tool:HR41-TP
  - The recommended tightening torque of Ref. No. ④ to be 5 to 5.5 N·m.
  - Fig.2 shows the recommendd panel dimention.  
Fig.3 shows the state applicable connector set up.  
When connector set up, it in order of Ref. ②, panel, Ref. ③, Ref. ④.  
Please check Ref No. ② is properly set at the groove of Ref.No. ①.  
While mounting the connector,make sure that Ref No. ② is not caught.
  - The assembly of this product applies to the manual ETAD-C0288
  - The surface roughness of the cross-hatched part should be applied to the wiring side.

2	Silicone rubber	(Light red)	4	Polyamide	(Black) UL94V-0
1	Polyamide	(Black) UL94V-0	3	Stainless steel	
NO.	MATERIAL	FINISH . REMARKS	NO.	MATERIAL	FINISH . REMARKS
UNITS mm		SCALE 1 : 1	COUNT 3	DESCRIPTION OF REVISIONS DIS-C-00004306	DESIGNED SH. KOYAMA
		APPROVED : SU. OBARA	20120620	DRAWING NO.	EDC3-117699-00
		CHECKED : HY. KOBAYASHI	20120620	PART NO.	HR41-25WBRA-5PC
		DESIGNED : TY. SUZUKI	20120620	CODE NO.	CL141-0010-8-00
		DRAWN : TY. SUZUKI	20120620		
		DATE	20201016		