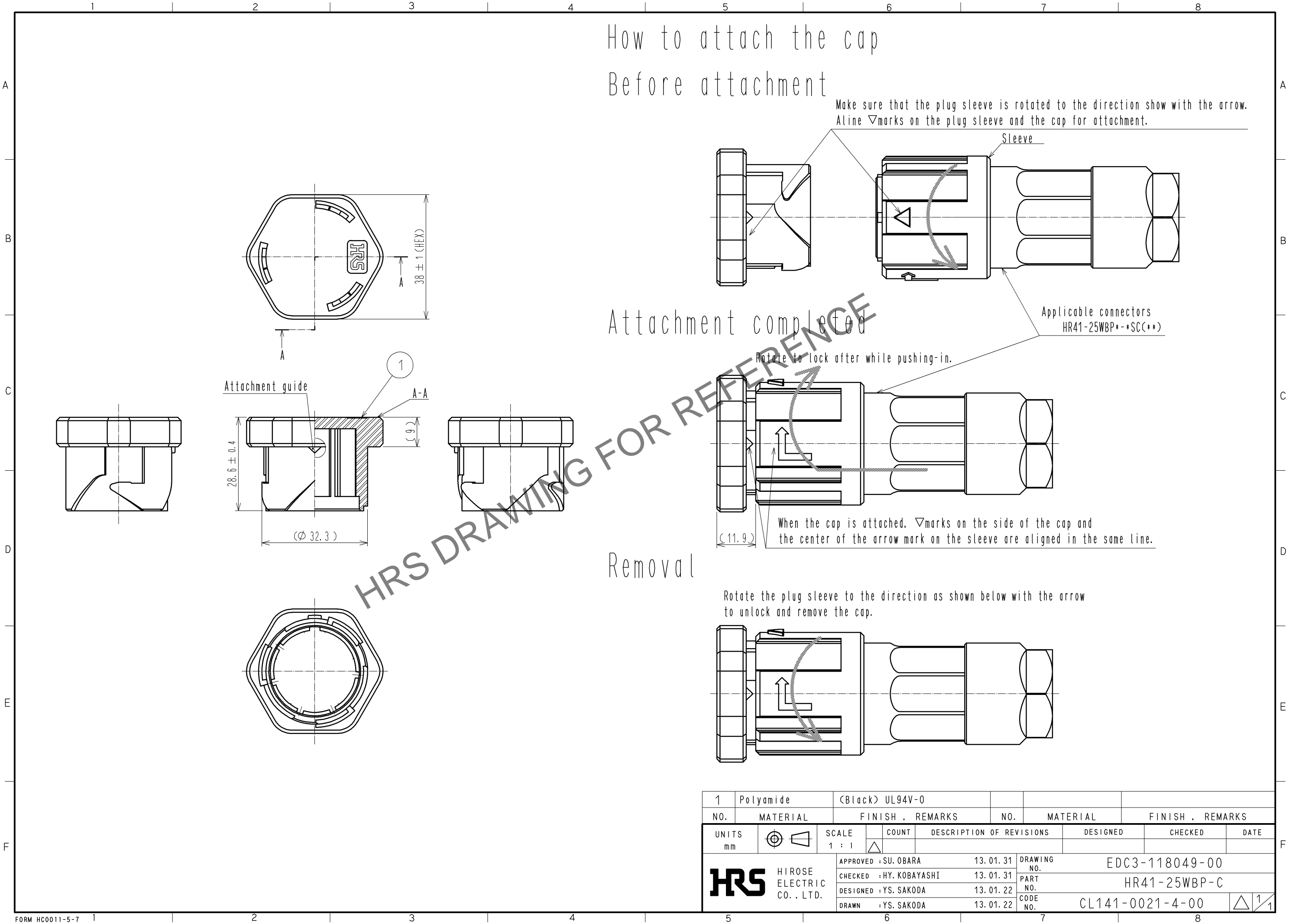
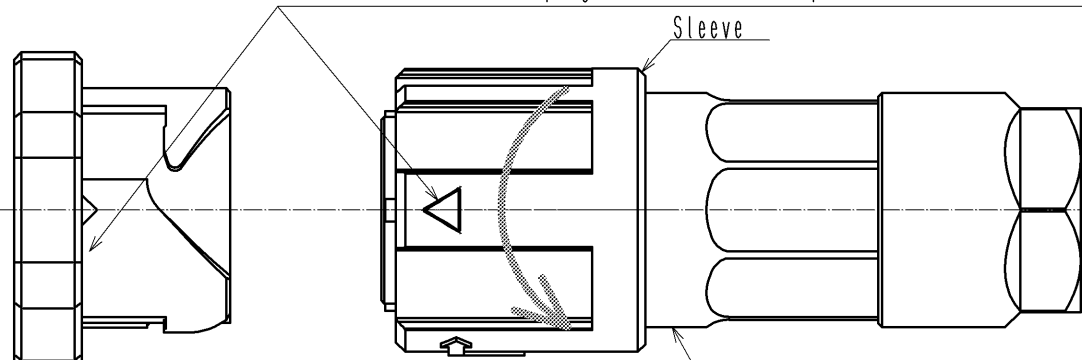


May.1.2024 Copyright 2024 HIROSE ELECTRIC CO., LTD. All Rights Reserved.
In case of consideration for using Automotive equipment / device which demand high reliability, kindly contact our sales window correspondents.



How to attach the cap
Before attachment

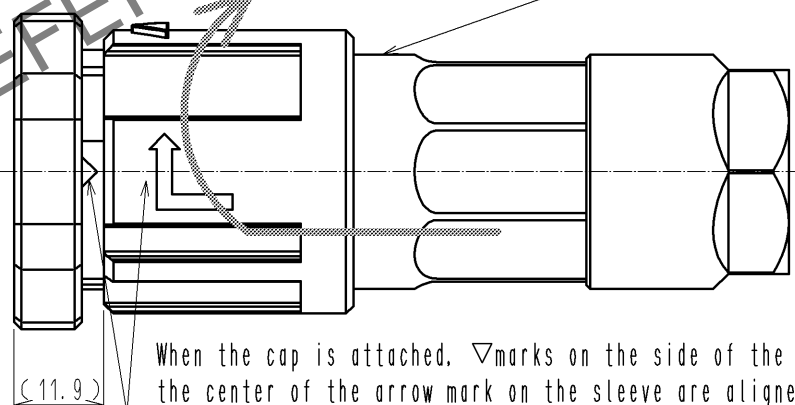
Make sure that the plug sleeve is rotated to the direction show with the arrow.
Align ▽marks on the plug sleeve and the cap for attachment.



Attachment completed

Applicable connectors
HR41-25WBP*-SC(**)

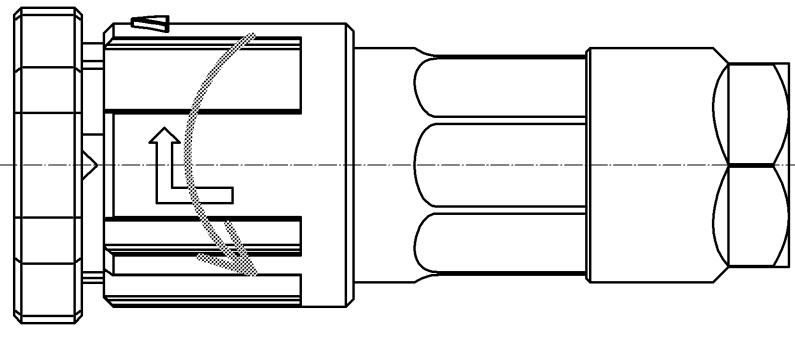
Rotate to lock after while pushing-in.



When the cap is attached, ▽marks on the side of the cap and the center of the arrow mark on the sleeve are aligned in the same line.

Removal

Rotate the plug sleeve to the direction as shown below with the arrow to unlock and remove the cap.



1	Polyamide	(Black) UL94V-0						
NO.	MATERIAL	FINISH . REMARKS	NO.	MATERIAL	FINISH . REMARKS			
UNITS mm		SCALE 1 : 1	COUNT △	DESCRIPTION OF REVISIONS	DESIGNED	CHECKED	DATE	
HIROSE ELECTRIC CO., LTD.		APPROVED : SU. OBARA	13. 01. 31	DRAWING NO.	EDC3-118049-00			
		CHECKED : HY. KOBAYASHI	13. 01. 31	PART NO.	HR41-25WBP-C			
		DESIGNED : YS. SAKODA	13. 01. 22	CODE NO.	CL141-0021-4-00			
		DRAWN : YS. SAKODA	13. 01. 22					1/1