


Note 1 When the silicone rubber comes away, remove the possible contamination attached to the silicone rubber surface for cleaning. Then, attach the silicone rubber to the cap for reuse.

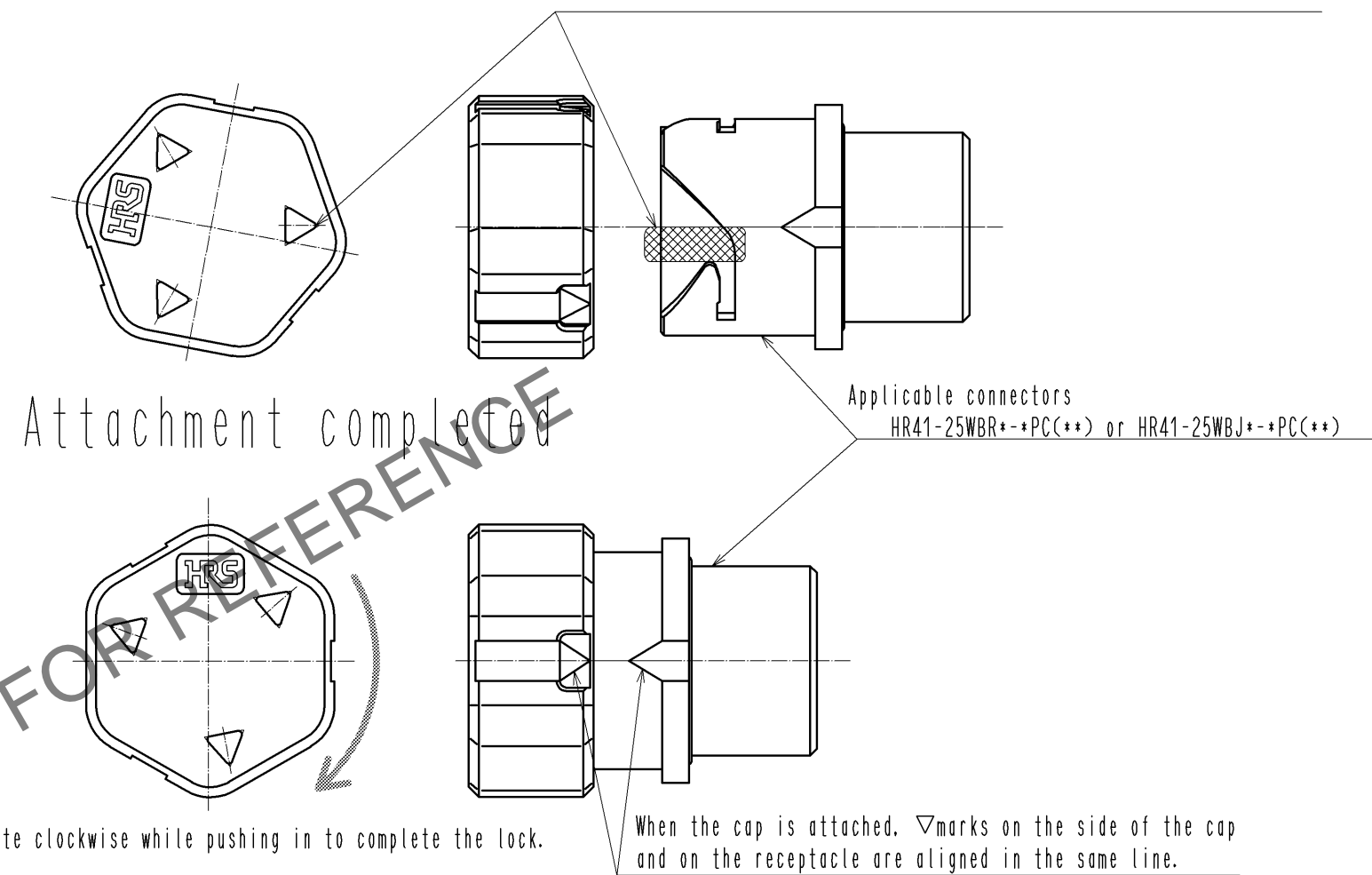
How to attach the cap

Before attachment

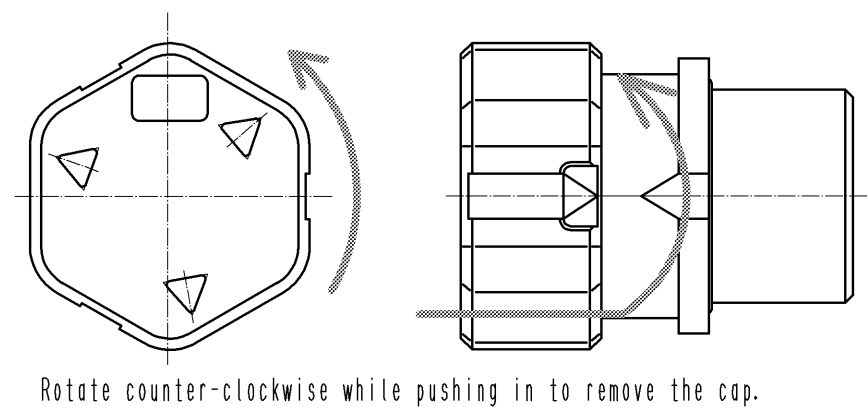
Ali  
Pos

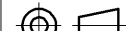


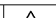
Align the ▽mark on the top surface of the cap to the  area shown below. A

Positional relationship of the ▽mark on the top surface of the cap and the receptacle shows an example.



## Removal



1	Polyamide	(Black) UL94V-0		2	Silicone rubber	(Red)		
NO.	MATERIAL	FINISH , REMARKS		NO.	MATERIAL	FINISH , REMARKS		
UNITS mm		SCALE	COUNT	DESCRIPTION OF REVISIONS		DESIGNED	CHECKED	DATE
		1 : 1						
		APPROVED : SU. OBARA		13. 01. 31	DRAWING NO.		EDC3-118050-00	
		CHECKED : HY. KOBAYASHI		13. 01. 31	PART NO.		HR41-25WBR-C	
		DESIGNED : YS. SAKODA		13. 01. 22	CODE NO.		CL141-0022-7-00	
 HIROSE ELECTRIC CO., LTD.		DRAWN : YS. SAKODA		13. 01. 22			 1/1	