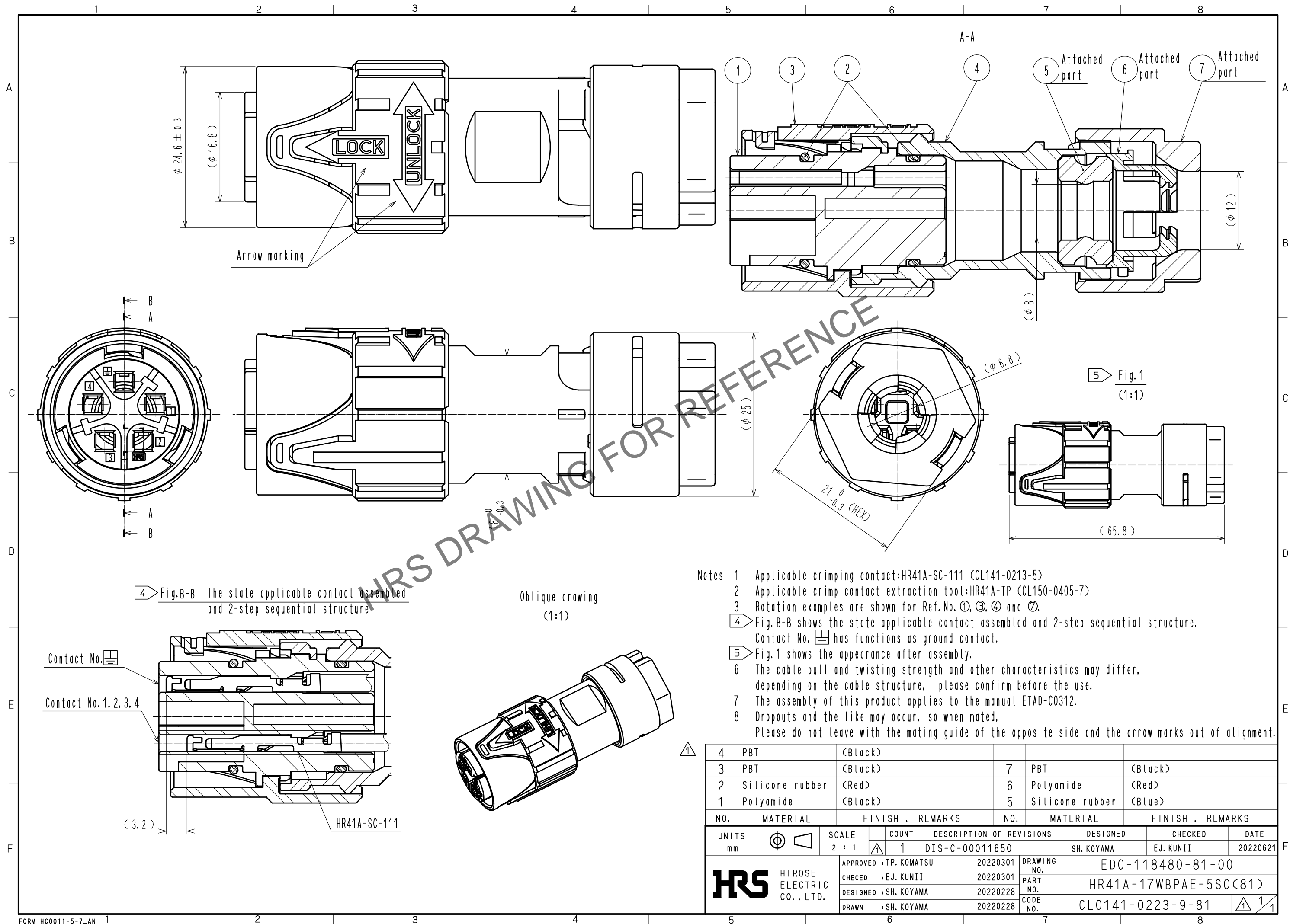
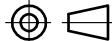
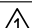



Apr.1.2024 Copyright 2024 HIROSE ELECTRIC CO., LTD. All Rights Reserved.
In case of consideration for using Automotive equipment / device which demand high reliability, kindly contact our sales window correspondents.



- Notes
- 1 Applicable crimping contact:HR41A-SC-111 (CL141-0213-5)
 - 2 Applicable crimp contact extraction tool:HR41A-TP (CL150-0405-7)
 - 3 Rotation examples are shown for Ref.No. ①, ③, ④ and ⑦.
 - ④ Fig.B-B shows the state applicable contact assembled and 2-step sequential structure. Contact No. ① has functions as ground contact.
 - ⑤ Fig.1 shows the appearance after assembly.
 - 6 The cable pull and twisting strength and other characteristics may differ, depending on the cable structure. please confirm before the use.
 - 7 The assembly of this product applies to the manual ETAD-C0312.
 - 8 Dropouts and the like may occur. so when mated. Please do not leave with the mating guide of the opposite side and the arrow marks out of alignment.

4	PBT	(Black)							
3	PBT	(Black)		7	PBT	(Black)			
2	Silicone rubber	(Red)		6	Polyamide	(Red)			
1	Polyamide	(Black)		5	Silicone rubber	(Blue)			
NO.	MATERIAL	FINISH . REMARKS			NO.	MATERIAL	FINISH . REMARKS		
UNITS mm		SCALE 2 : 1		COUNT 1	DESCRIPTION OF REVISIONS DIS-C-00011650		DESIGNED SH. KOYAMA	CHECKED EJ. KUNII	DATE 20220621
 HIROSE ELECTRIC CO., LTD.		APPROVED : TP. KOMATSU		20220301		DRAWING NO. EDC-118480-81-00			
		CHECKED : EJ. KUNII		20220301		PART NO. HR41A-17WBP AE-5SC(81)			
		DESIGNED : SH. KOYAMA		20220228		CODE NO. CL0141-0223-9-81			
		DRAWN : SH. KOYAMA		20220228					
								