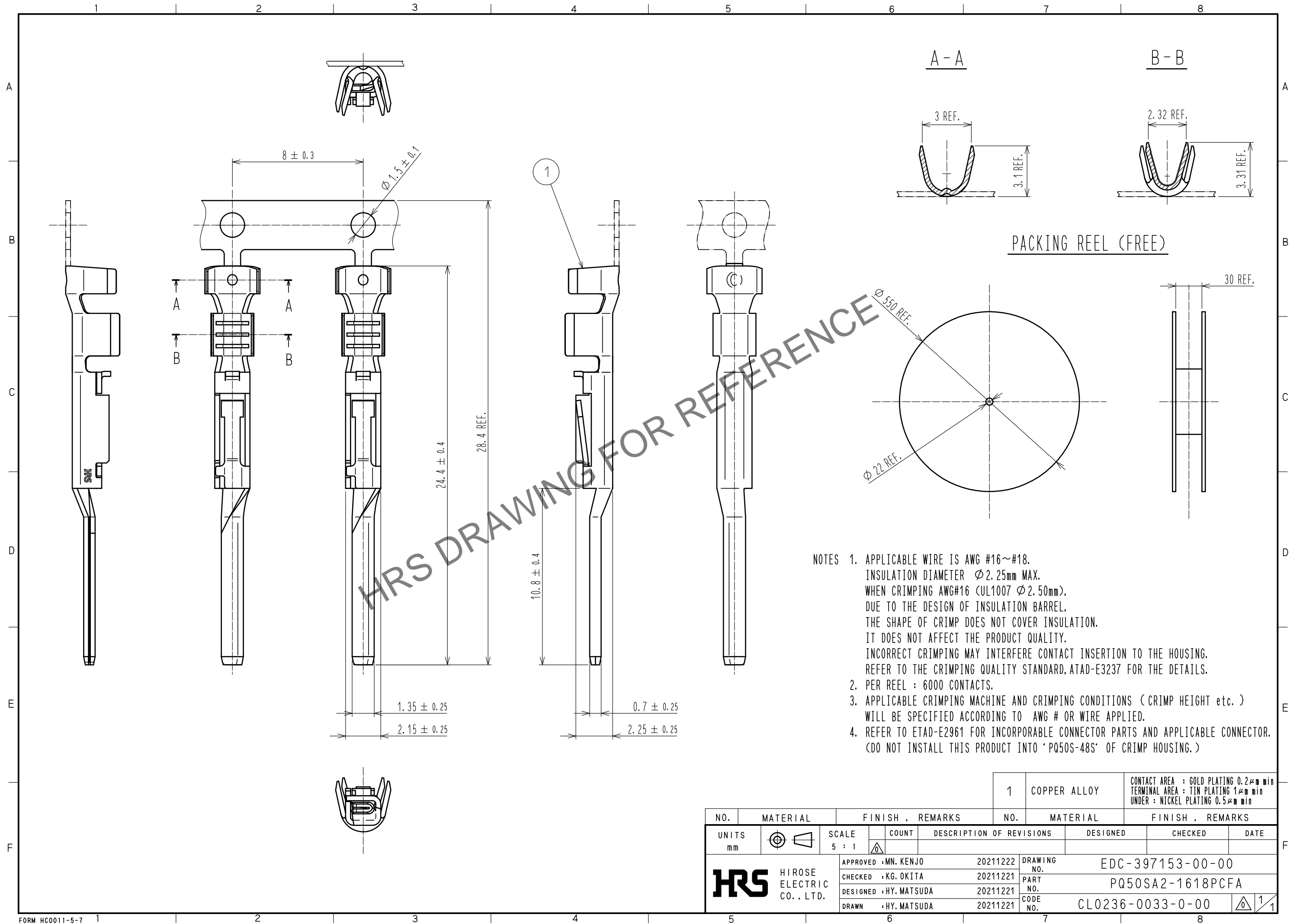



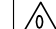


May.1.2024 Copyright 2024 HIROSE ELECTRIC CO., LTD. All Rights Reserved.
In case of consideration for using Automotive equipment / device which demand high reliability, kindly contact our sales window correspondents.



			1		COPPER ALLOY		CONTACT AREA : GOLD PLATING 0.2μm min TERMINAL AREA : TIN PLATING 1μm min UNDER : NICKEL PLATING 0.5μm min			
NO.	MATERIAL		FINISH , REMARKS			NO.	MATERIAL		FINISH , REMARKS	
UNITS mm		SCALE 5 : 1		COUNT	DESCRIPTION OF REVISIONS		DESIGNED		CHECKED	DATE
 HIROSE ELECTRIC CO., LTD.			APPROVED : MN. KENJO		20211222	DRAWING NO.		EDC-397153-00-00		
			CHECKED : KG. OKITA		20211221	PART NO.		PQ50SA2-1618PCFA		
			DESIGNED : HY. MATSUDA		20211221	CODE NO.		CL0236-0033-0-00		
			DRAWN : HY. MATSUDA		20211221			 1/1		