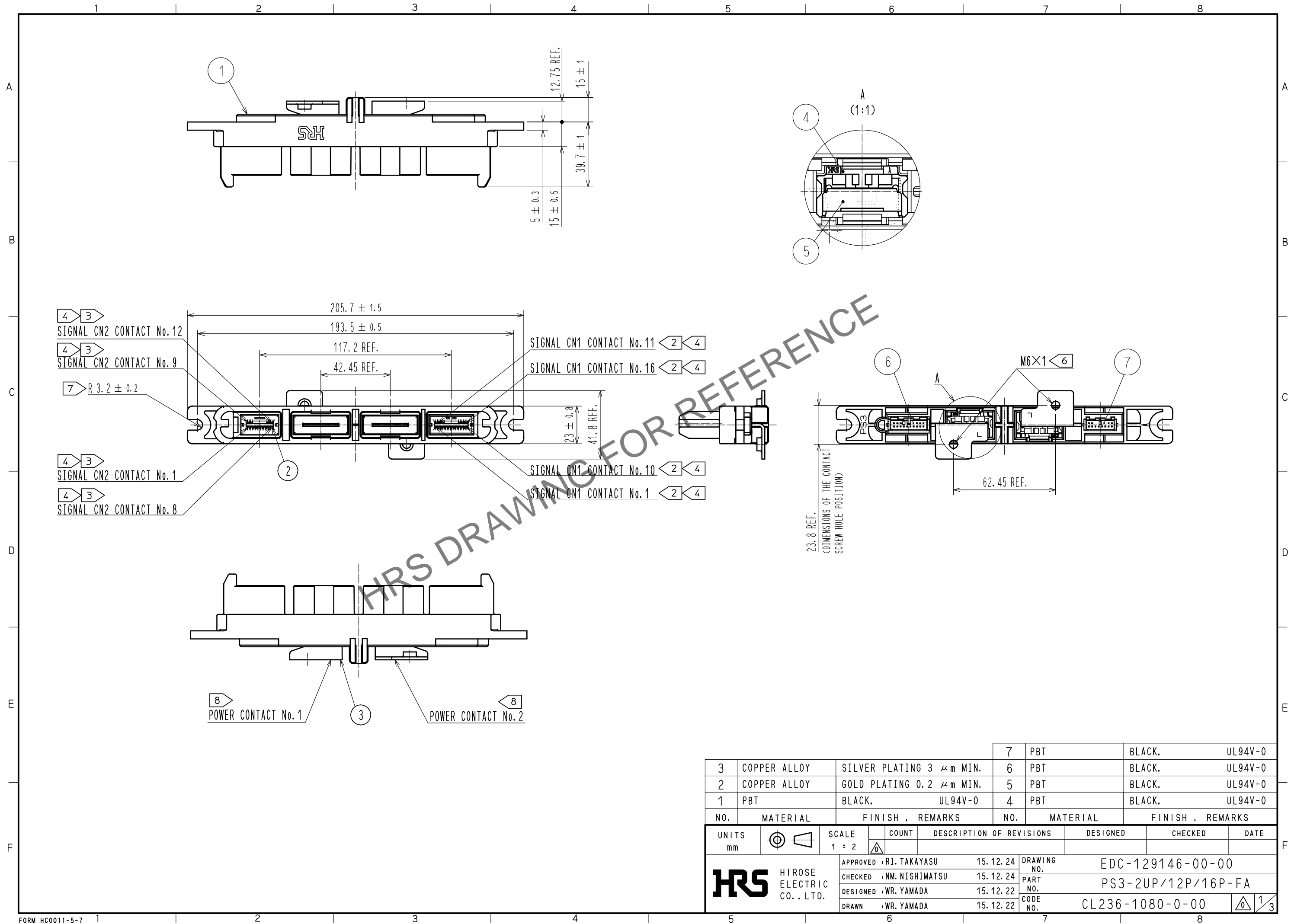
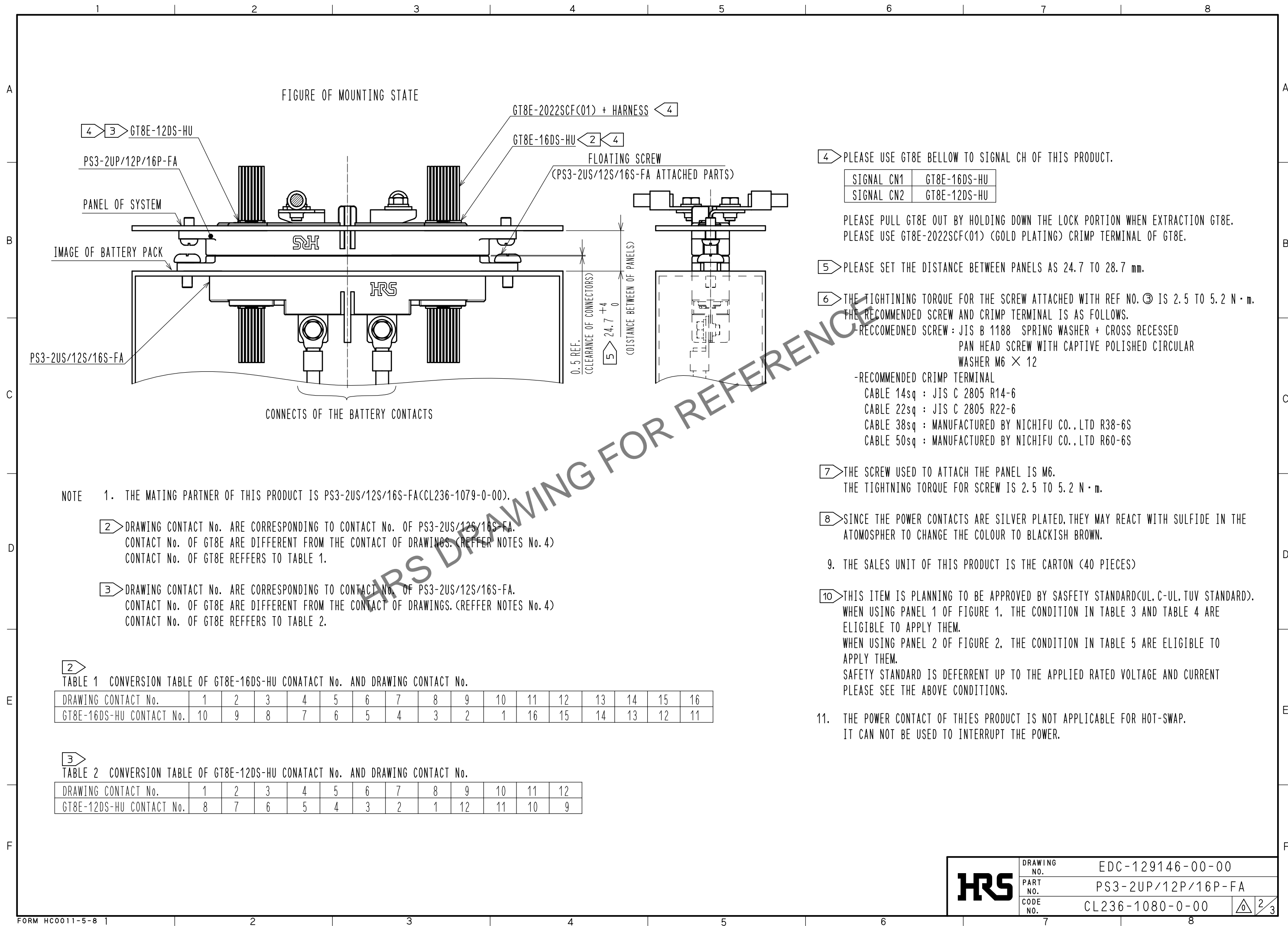


Apr.1.2024 Copyright 2024 HIROSE ELECTRIC CO., LTD. All Rights Reserved.  
In case of consideration for using Automotive equipment / device which demand high reliability, kindly contact our sales window correspondents.



3	COPPER ALLOY	SILVER PLATING 3 $\mu$ m MIN.	7	PBT	BLACK.	UL94V-0
2	COPPER ALLOY	GOLD PLATING 0.2 $\mu$ m MIN.	6	PBT	BLACK.	UL94V-0
1	PBT	BLACK.	5	PBT	BLACK.	UL94V-0
		UL94V-0	4	PBT	BLACK.	UL94V-0
NO.	MATERIAL	FINISH . REMARKS	NO.	MATERIAL	FINISH . REMARKS	
UNITS mm		SCALE 1 : 2	COUNT $\Delta$	DESCRIPTION OF REVISIONS		DESIGNED
<b>HRS</b> HIROSE ELECTRIC CO., LTD.		APPROVED : RI. TAKAYASU	15.12.24	DRAWING NO.	EDC-129146-00-00	
		CHECKED : NM. NISHIMATSU	15.12.24	PART NO.	PS3-2UP/12P/16P-FA	
		DESIGNED : WR. YAMADA	15.12.22	CODE NO.	CL236-1080-0-00	
		DRAWN : WR. YAMADA	15.12.22			$\Delta$ 1/3

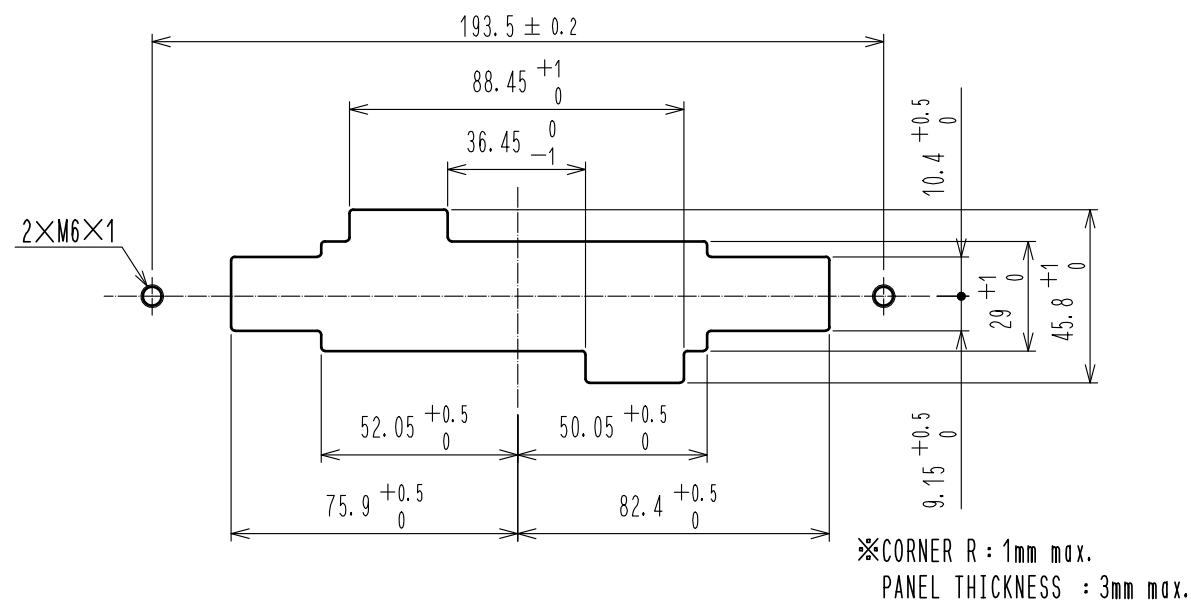
Apr.1.2024 Copyright 2024 HIROSE ELECTRIC CO., LTD. All Rights Reserved.  
In case of consideration for using Automotive equipment / device which demand high reliability, kindly contact our sales window correspondents.



Apr.1.2024 Copyright 2024 HIROSE ELECTRIC CO., LTD. All Rights Reserved.  
In case of consideration for using Automotive equipment / device which demand high reliability, kindly contact our sales window correspondents.

10 CONDITION OF SAFETY STANDARD(CUL, C-UL, TUV STANDARD)

10 FIG1. RECOMMENDED PANEL 1 CUTOUT



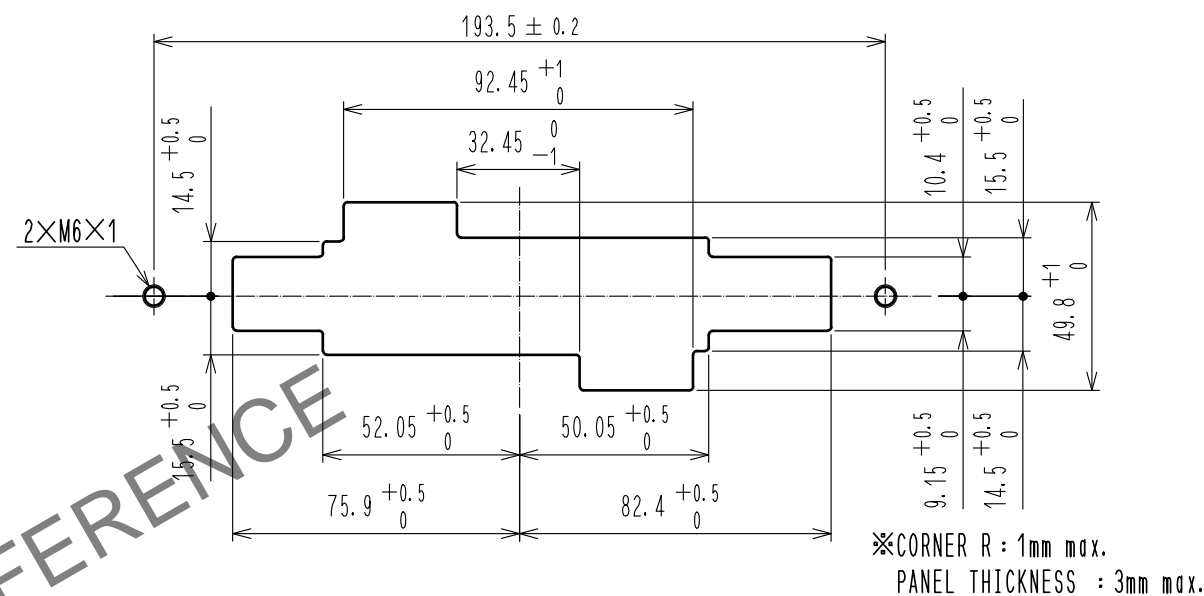
10 TABLE 3. UL, C-UL CONDITION

	CONDITION 1	CONDITION 2
CURRENT VOLTAGE(AC/DC)	600V	
CURRENT RATING	100A	150A
CABLE	14 TO 22sq(※1)	38 TO 50sq(※1)
CREEPAGE DISTANCE(※2)	MIN:3.2mm	
CLEARANCE DISTANCE(※2)	MIN:3.2mm	

10 TABLE 4. TUV CONDITON

	CONDITION I	CONDITION II
CURRENT VOLTAGE(AC/DC)	800V	600V
CURRENT RATING	100A(CABLE 14 TO 22sq ※1)	125A(CABLE 38sq ※1)
	150A(CABLE 50sq ※1)	
OVER VOLTAGE CATEGORY	II	III
POLLUTION DEGREE	3	
CREEPAGE DISTANCE(※2)	MIN:12.6mm	MIN:12.6mm
CLEARANCE DISTANCE(※2)	MIN:6mm	MIN:6mm
INSULATION SYSTEM	BASIC INSULATION (PANEL HAS THE EARTH)	

10 FIG2. RECOMMENDED PANEL 2 CUTOUT



10 TABLE 5. TUV CONDITON

	CONDITION III
CURRENT VOLTAGE(AC/DC)	1000V
CURRENT RATING	100A(CABLE 14 TO 22sq ※1)
	125A(CABLE 38sq ※1)
	150A(CABLE 50sq ※1)
OVER VOLTAGE CATEGORY	III
POLLUTION DEGREE	3
CREEPAGE DISTANCE(※2)	MIN:16mm
CLEARANCE DISTANCE(※2)	MIN:8mm
INSULATION SYSTEM	BASIC INSULATION (PANEL HAS THE EARTH)

※1 : AS SCREWS AND CRIMP TERMINAL ATTACHED WITH POWER CONTACT HAVE AN IMPACT ON THE CREEPAGE DISTANCE AND THE CLEARANCE DISTANCE, PLEASE USE RECOMMENDED SCREWS AND CRIMP TERMINALS.  
IN CASE YOU USE CABLES OTHER THAN FOLLOWING RECOMMENDED SCREWS AND CONTACTS.  
PLEASE BE CAREFUL THAT THE CREEPAGE DISTANCE AND THE CLEARANCE DISTANCE MEET THE STANDARD OF UL, C-UL, TUV.

※2 : THE COVERAGE OF THE CREEPAGE DISTANCE AND THE CLEARANCE DISTANCE IS AS FOLLOWS.  
-BETWEEN CRIMP TERMINALS  
-BETWEEN POWER CONTACT AND PANEL  
-BETWEEN CRIMP TERMINAL AND PANEL  
-BETWEEN SCREWS (ATTACHEHD WITH POWER CONTACT) AND PANEL

HRS

DRAWING NO.	EDC-129146-00-00
PART NO.	PS3-2UP/12P/16P-FA
CODE NO.	CL236-1080-0-00

3/3