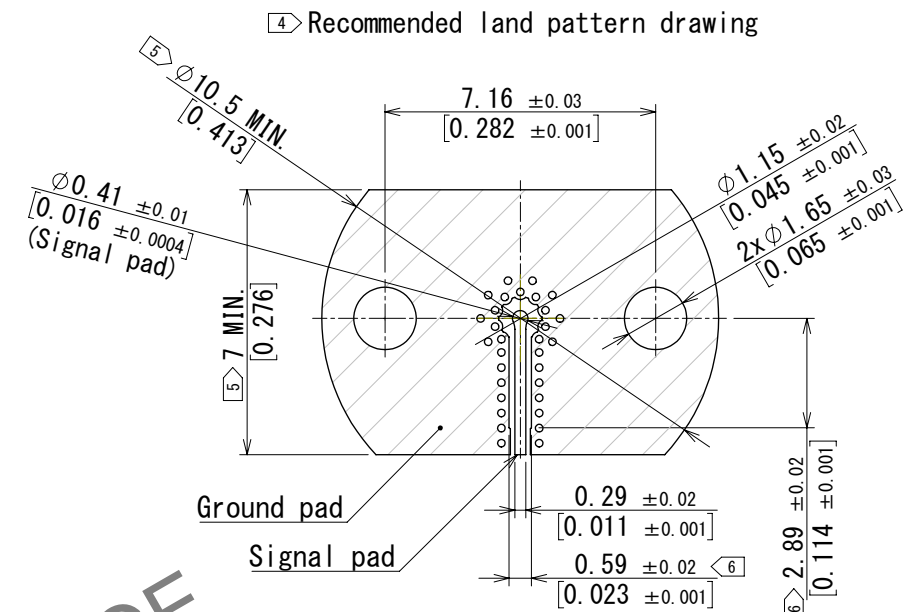
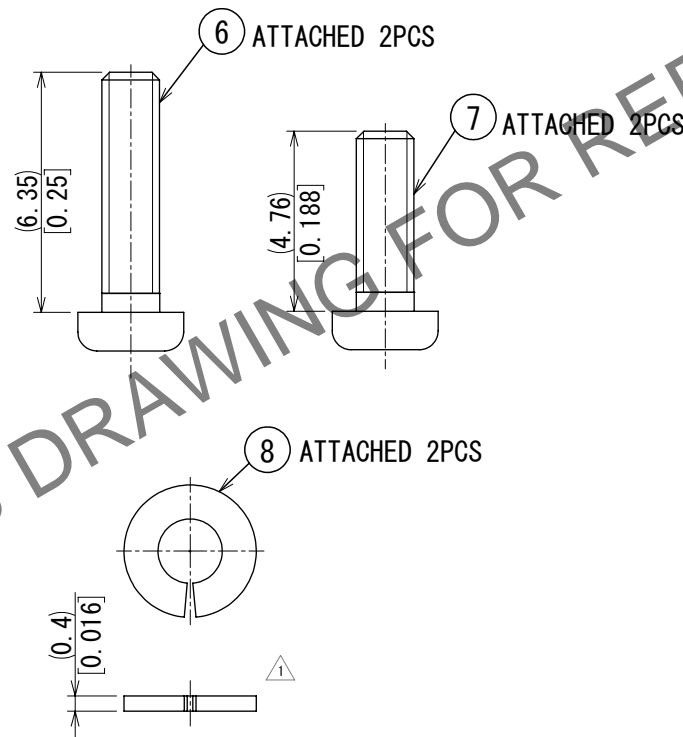
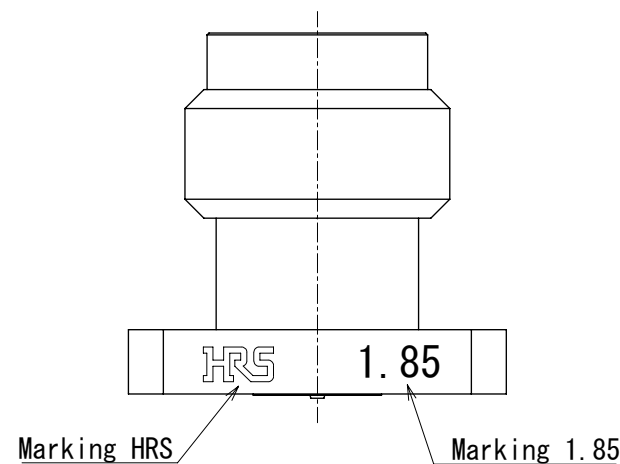
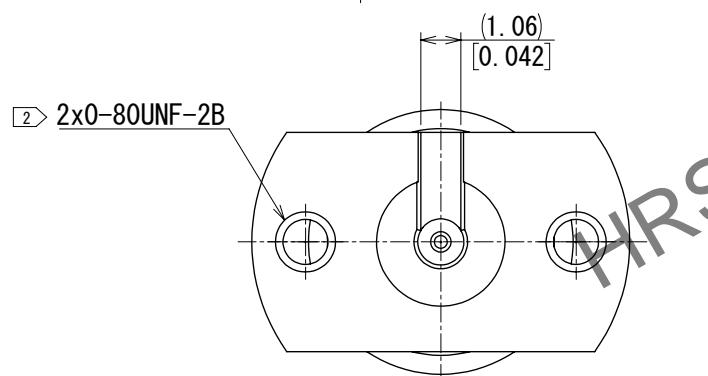
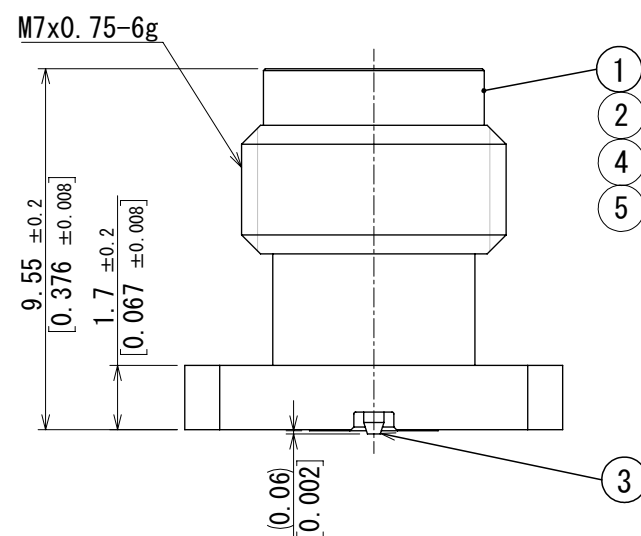
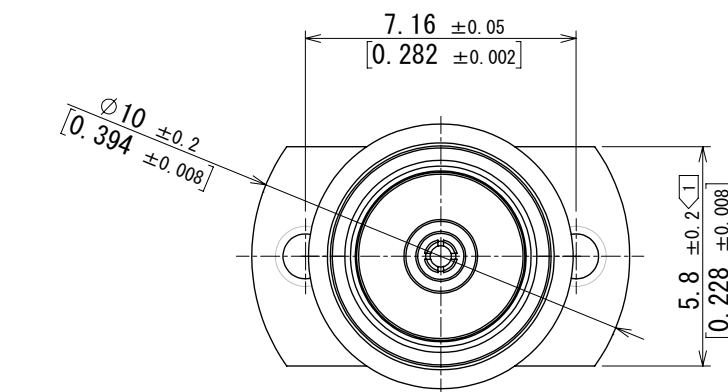
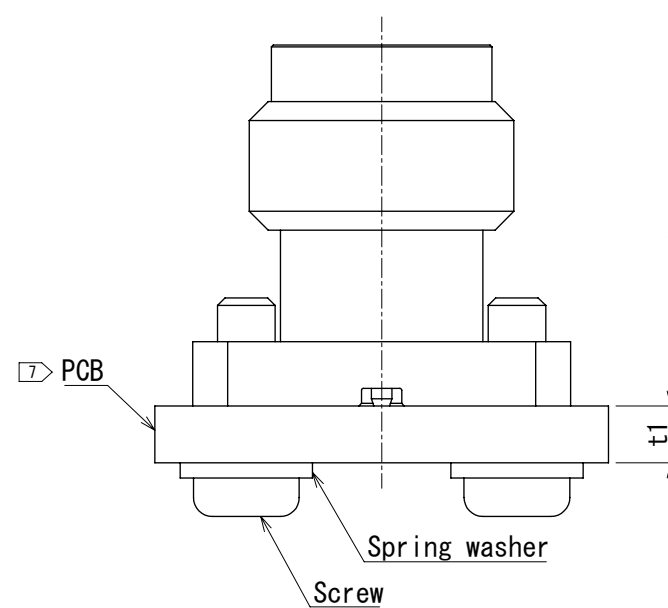


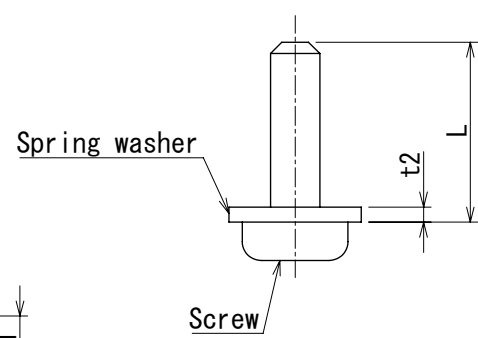
May.1.2024 Copyright 2024 HIROSE ELECTRIC CO., LTD. All Rights Reserved.
In case of consideration for using Automotive equipment / device which demand high reliability, kindly contact our sales window correspondents.



PCB mounting drawing



0-80UNF Outline drawing



- 1 Please hold the connector flange with a spanner to avoid any torque acting on the PCB when the connector is mating.
- 2 0-80UNF screws recommended tightening torque is 0.09N·m.
- Please tighten the screws evenly during the connector mounting to ensure stable electrical contact.
- 3 Recommended length of the screws: $L = t1(\text{PCB}) + t2(\text{spring washer}) + 2 \text{ mm}$ [0.08 in].
- 4 PCB design is changed depending on the PCB material, thickness and stackup.
- 5 The solder mask prohibited area is indicated.
- 6 The connector is placed over this area.
- 7 PCB thickness t1 should be 0.8 mm [0.032 in] or more.
8. This connector is not recommended for use in actual commercial equipment.

4	PEI		8	STAINLESS STEEL	(SPRING WASHER 2pcs)
3	BERYLLIUM COPPER	GOLD PLATING	7	STEEL	(0-80UNF 3/16in 2pcs)
2	STAINLESS STEEL	PASSIVATED	6	STEEL	(0-80UNF 1/4in 2pcs)
1	BRASS	NICKEL PLATING	5	PTFE	
NO.	MATERIAL	FINISH , REMARKS	NO.	MATERIAL	FINISH , REMARKS
UNITS mm [inch]					
SCALE 5:1		COUNT 1	DESCRIPTION OF REVISIONS DIS-D-00016021		DESIGNED TS. KANEKO
APPROVED : TS. NAKAGAWA		2023. 05. 18	DRAWING NO. EDC-401978-15-00		CHECKED TS. NAKAGAWA
CHECKED : TS. NAKAGAWA		2023. 05. 18	PART NO. HV-R-SR2-SA (15)		DATE 2023. 06. 01
DESIGNED : TS. KANEKO		2023. 05. 18	CODE NO. CL0338-0030-0-15		
DRAWN : TS. KANEKO		2023. 05. 18			