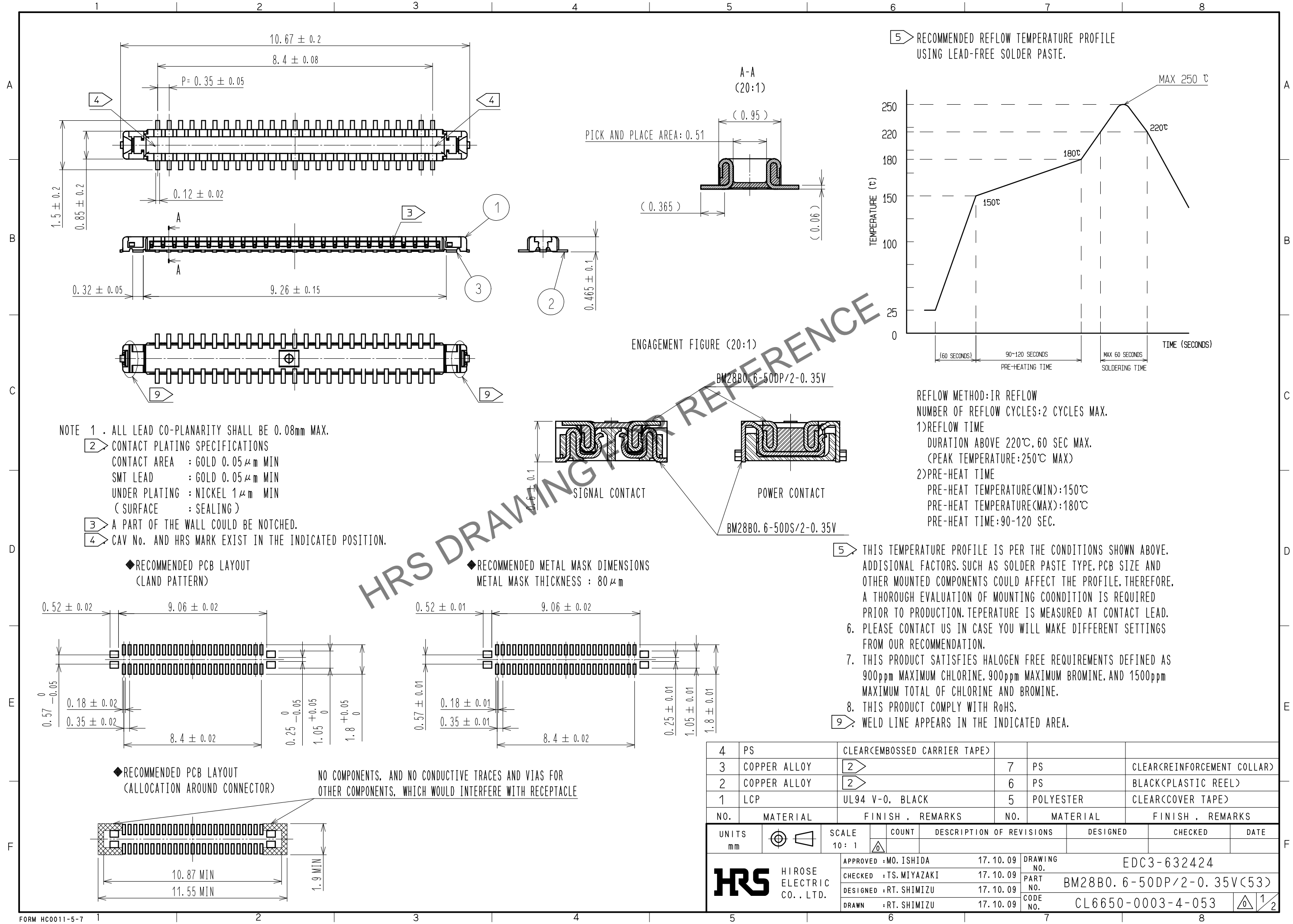


Feb.1.2025 Copyright 2025 HIROSE ELECTRIC CO., LTD. All Rights Reserved.
In case of consideration for using Automotive equipment / device which demand high reliability, kindly contact our sales window correspondents.



5 THIS TEMPERATURE PROFILE IS PER THE CONDITIONS SHOWN ABOVE. ADDITIONAL FACTORS, SUCH AS SOLDER PASTE TYPE, PCB SIZE AND OTHER MOUNTED COMPONENTS COULD AFFECT THE PROFILE, THEREFORE, A THOROUGH EVALUATION OF MOUNTING COONDITION IS REQUIRED PRIOR TO PRODUCTION. TEPERATURE IS MEASURED AT CONTACT LEAD.

6. PLEASE CONTACT US IN CASE YOU WILL MAKE DIFFERENT SETTINGS FROM OUR RECOMMENDATION.

7. THIS PRODUCT SATISFIES HALOGEN FREE REQUIREMENTS DEFINED AS 900ppm MAXIMUM CHLORINE, 900ppm MAXIMUM BROMINE, AND 1500ppm MAXIMUM TOTAL OF CHLORINE AND BROMINE.

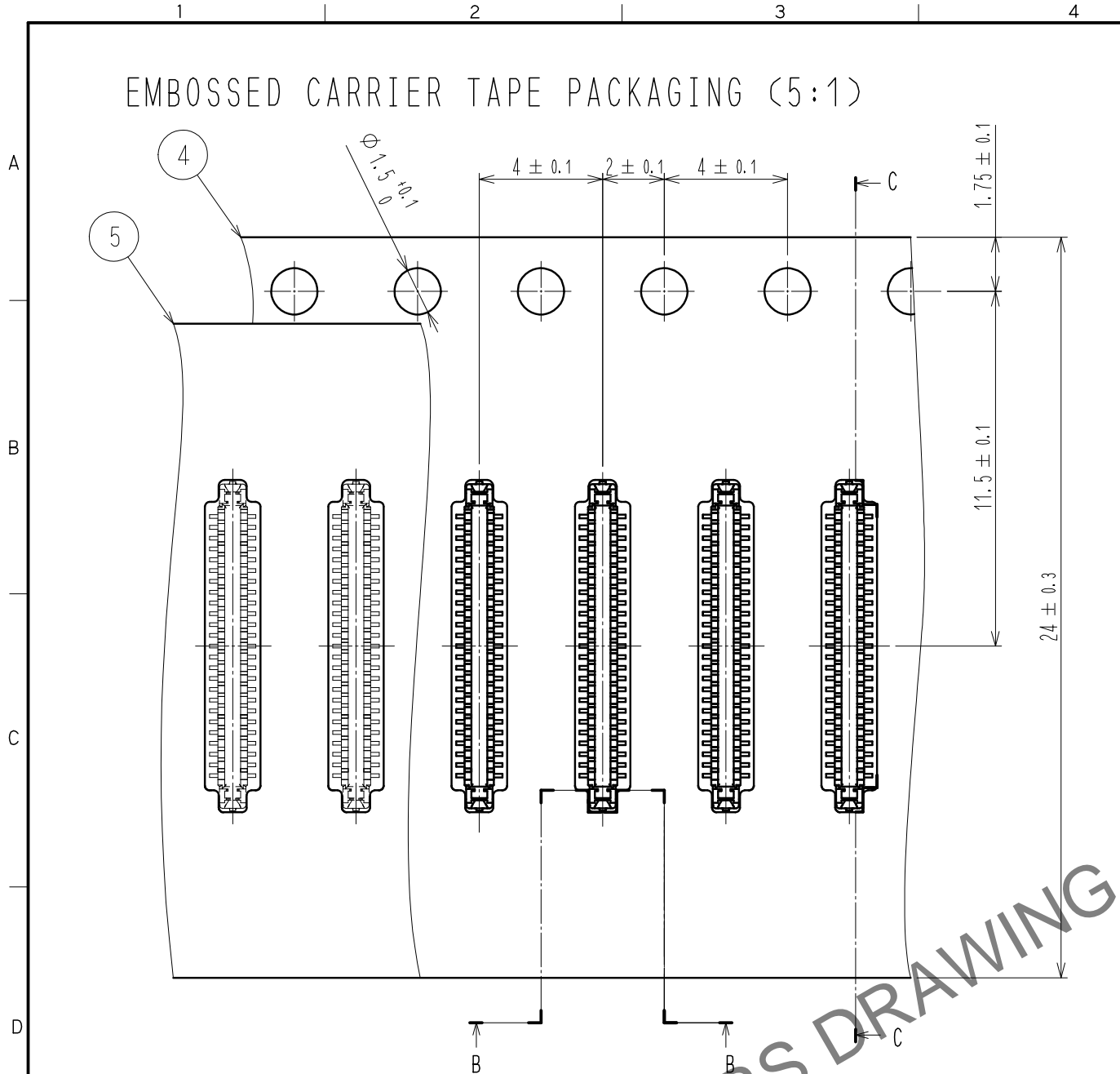
8. THIS PRODUCT COMPLY WITH RoHS.

9 WELD LINE APPEARS IN THE INDICATED AREA.

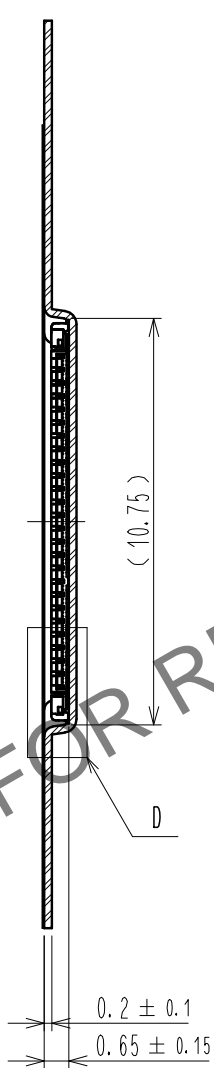
| 4 | PS | CLEAR(EMBOSSED CARRIER TAPE) | | | |
|------------------------|--------------|------------------------------|-------|------------------------------------|-----------------------------|
| 3 | COPPER ALLOY | 2 | 7 | PS | CLEAR(REINFORCEMENT COLLAR) |
| 2 | COPPER ALLOY | 2 | 6 | PS | BLACK(PLASTIC REEL) |
| 1 | LCP | UL94 V-0, BLACK | 5 | POLYESTER | CLEAR(COVER TAPE) |
| NO. | MATERIAL | FINISH . REMARKS | NO. | MATERIAL | FINISH . REMARKS |
| UNITS mm | | SCALE 10:1 | COUNT | | DESCRIPTION OF REVISIONS |
| DESIGNED | | CHECKED | | DATE | |
| APPROVED : MO. ISHIDA | | 17.10.09 | | DRAWING NO. EDC3-632424 | |
| CHECKED : TS. MIYAZAKI | | 17.10.09 | | PART NO. BM28B0.6-50DP/2-0.35V(53) | |
| DESIGNED : RT. SHIMIZU | | 17.10.09 | | CODE NO. CL6650-0003-4-053 | |
| DRAWN : RT. SHIMIZU | | 17.10.09 | | 1/2 | |

Feb.1.2025 Copyright 2025 HIROSE ELECTRIC CO., LTD. All Rights Reserved.
 In case of consideration for using Automotive equipment / device which demand high reliability, kindly contact our sales window correspondents.

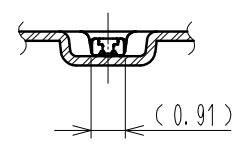
EMBOSED CARRIER TAPE PACKAGING (5:1)



C-C (5:1)

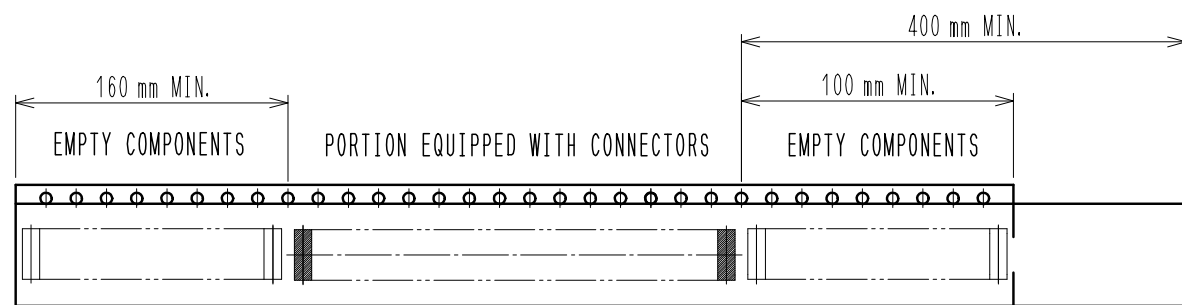
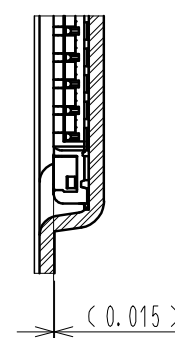


B-B (5:1)



DIRECTION OF UNREELING \rightarrow

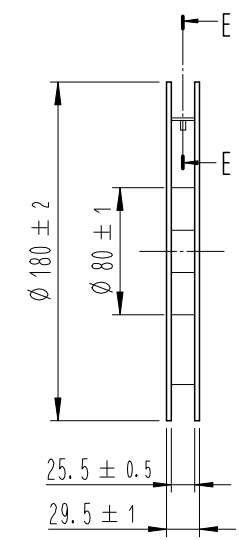
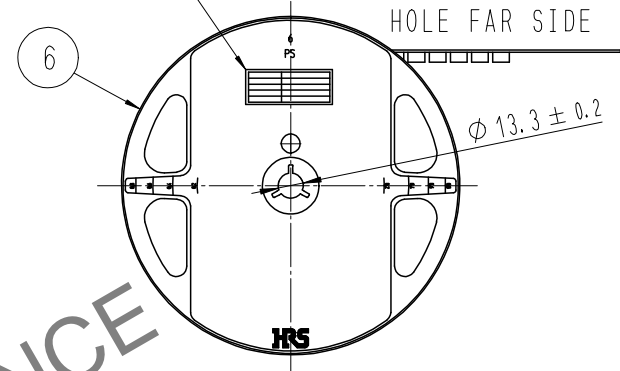
D (10:1)



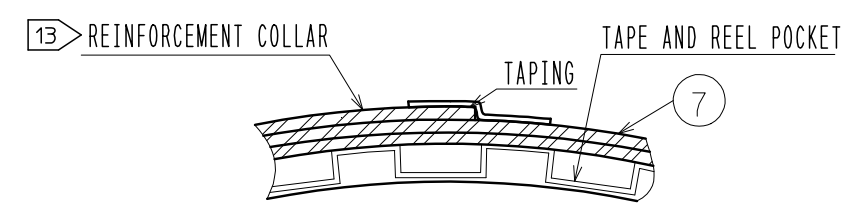
12 TAPING(FREE)

STYLE AND DIMENSION OF REEL (FREE)

Part No. LABEL



E-E (FREE)



DETAIL OF PART NO. LABEL

| | | |
|-------|----------------|----------------------|
| 製造年月日 | ** ** * | DATA OF MANUFACTURED |
| 製品コード | CL6650-****-** | CODE NO. |
| 製品名 | BM28B0.6-** | PART NO. |
| 数量 | 1,000 | QUANTITY |
| 納入者 | ヒロセ電機(株) | SUPPLIER |

- 10. PER REEL 1,000 CONNECTORS.
- 11. THE DIMENSIONS IN PARENTHESES ARE FOR REFERENCE.
- 12 REFER TO JIS C 0806. IEC 60286-3(PACKAGING OF COMPONENTS FOR AUTOMATIC HANDLING)
- 13 AFTER PACKAGING. ROLL 2 METERS OF THE REINFORCEMENT COLLAR TO OUTER CIRCUMFERENCE OF TAPE AND REEL POCKET. AND TAPE DOWN AT THE END THE COLLAR.

| | | |
|------------|-------------|---------------------------|
| HRS | DRAWING NO. | EDC3-632424 |
| | PART NO. | BM28B0.6-50DP/2-0.35V(53) |
| | CODE NO. | CL6650-0003-4-053 |
| | | \triangle 2/2 |