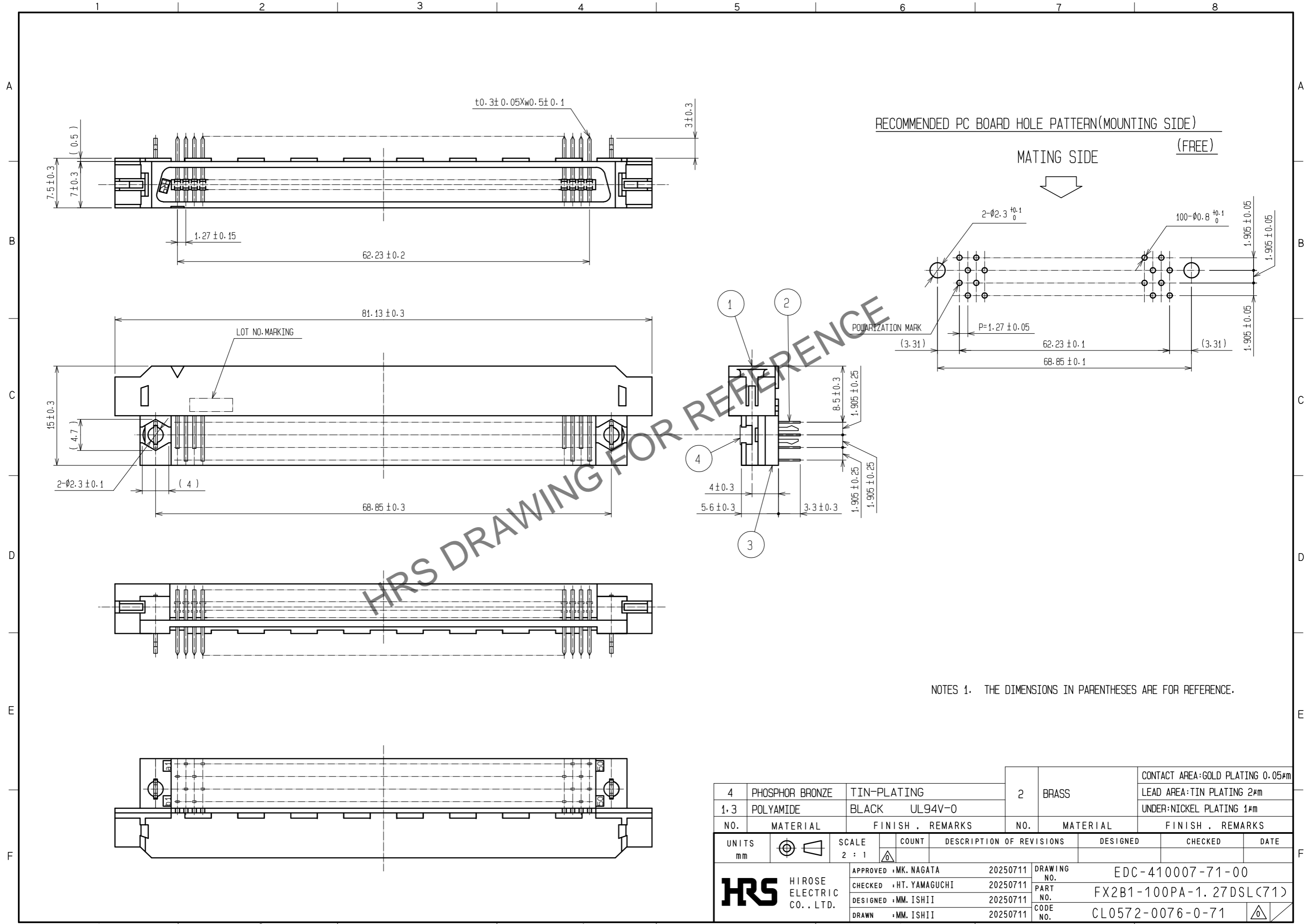


Apr.1.2026 Copyright 2026 HIROSE ELECTRIC CO., LTD. All Rights Reserved.
In case of consideration for using Automotive equipment / device which demand high reliability, kindly contact our sales window correspondents.



NOTES 1. THE DIMENSIONS IN PARENTHESES ARE FOR REFERENCE.

4	PHOSPHOR BRONZE	TIN-PLATING	2	BRASS	CONTACT AREA: GOLD PLATING 0.05μm
1.3	POLYAMIDE	BLACK UL94V-0			LEAD AREA: TIN PLATING 2μm
					UNDER: NICKEL PLATING 1μm
NO.	MATERIAL	FINISH . REMARKS	NO.	MATERIAL	FINISH . REMARKS
UNITS		SCALE	COUNT	DESCRIPTION OF REVISIONS	
mm		2 : 1		DESIGNED	CHECKED
HRS HIROSE ELECTRIC CO., LTD.			APPROVED : MK. NAGATA	20250711	DRAWING NO. EDC-410007-71-00
			CHECKED : HT. YAMAGUCHI	20250711	PART NO. FX2B1-100PA-1.27DSL(71)
			DESIGNED : MM. ISHII	20250711	CODE NO. CL0572-0076-0-71
			DRAWN : MM. ISHII	20250711	