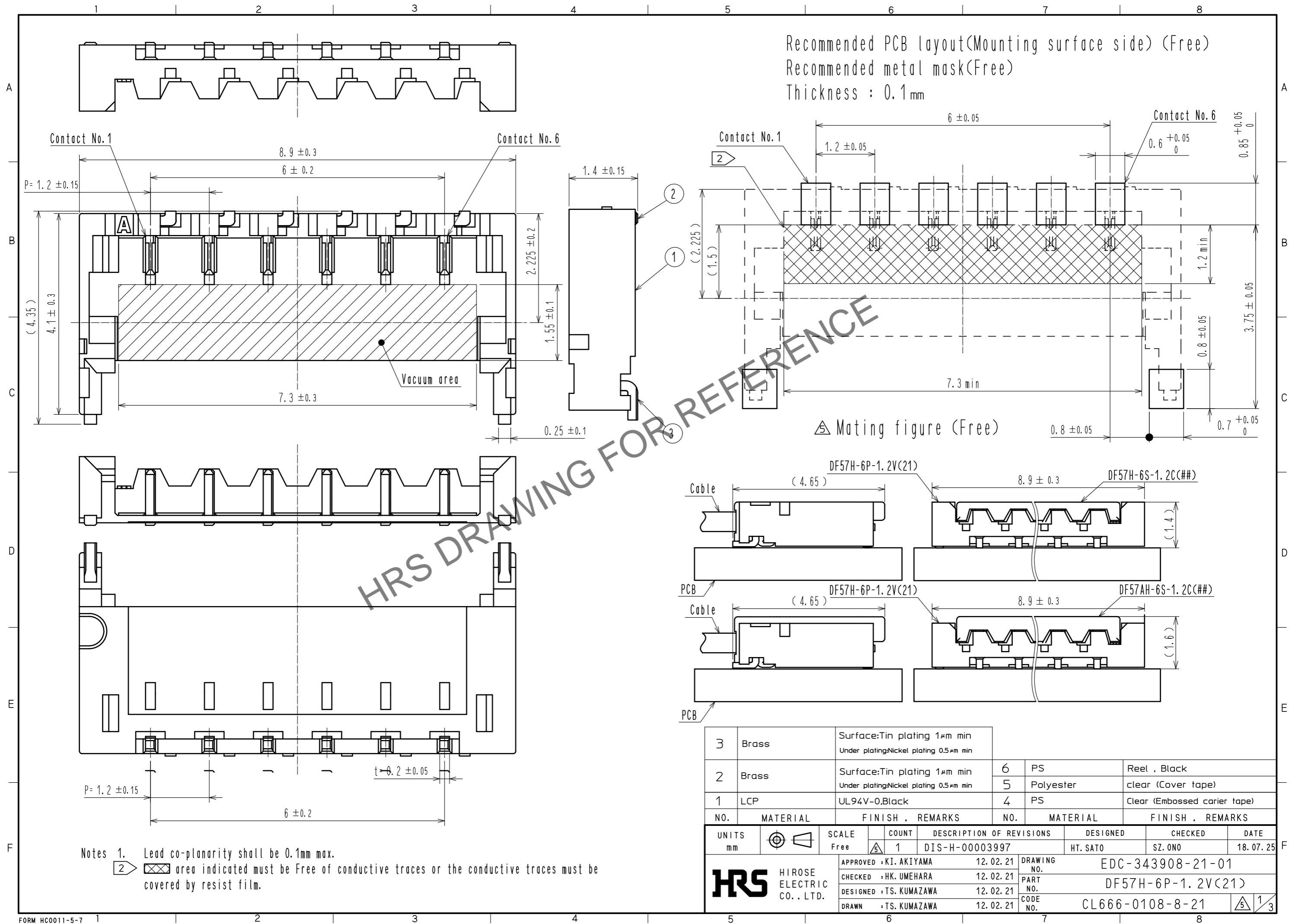
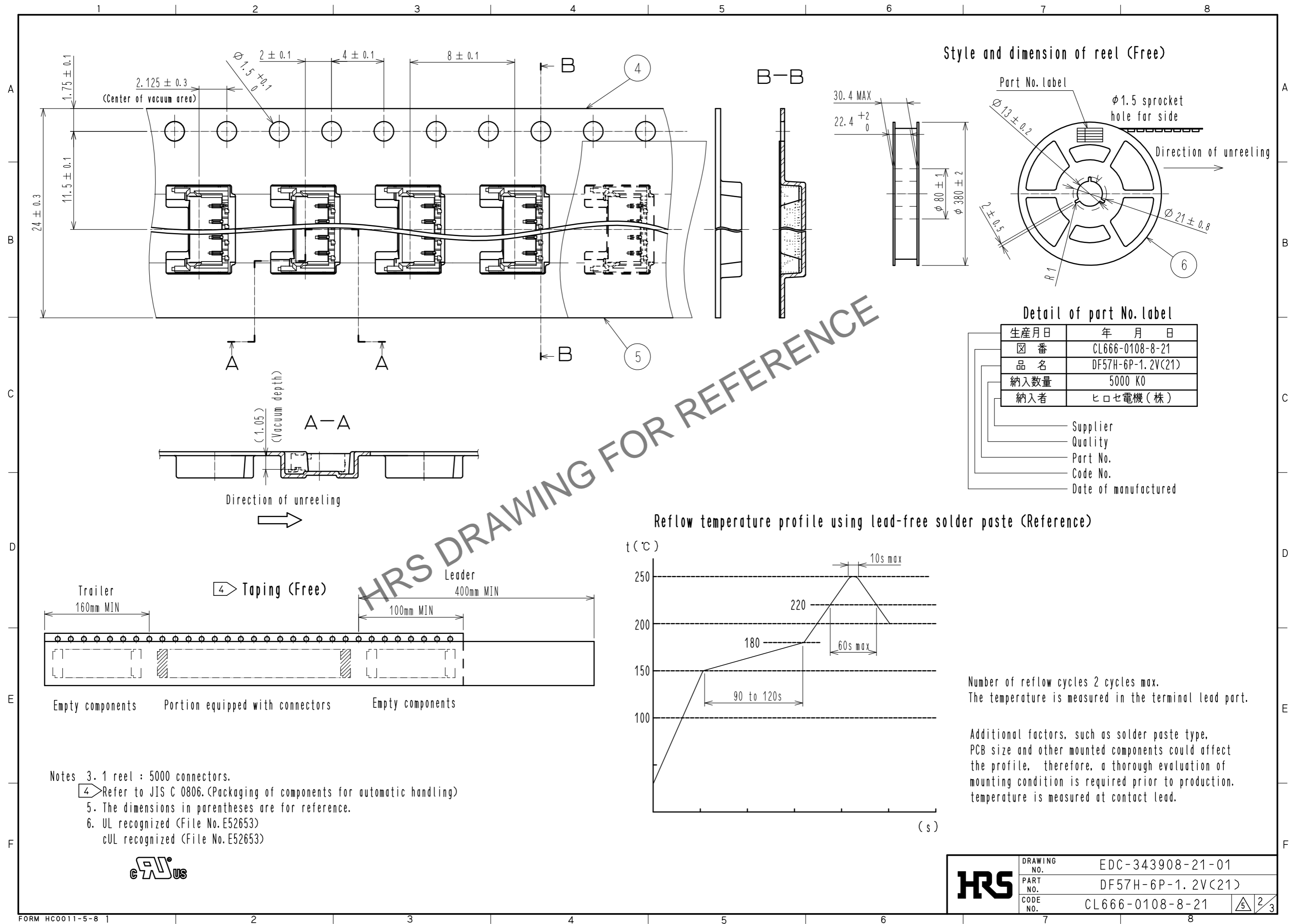


May.1.2024 Copyright 2024 HIROSE ELECTRIC CO., LTD. All Rights Reserved.
In case of consideration for using Automotive equipment / device which demand high reliability, kindly contact our sales window correspondents.

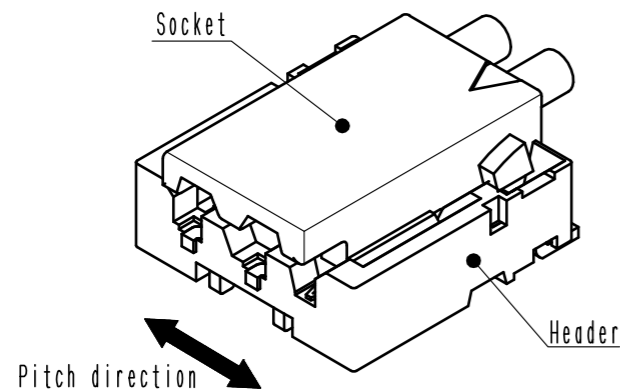


May.1.2024 Copyright 2024 HIROSE ELECTRIC CO., LTD. All Rights Reserved.
In case of consideration for using Automotive equipment / device which demand high reliability, kindly contact our sales window correspondents.

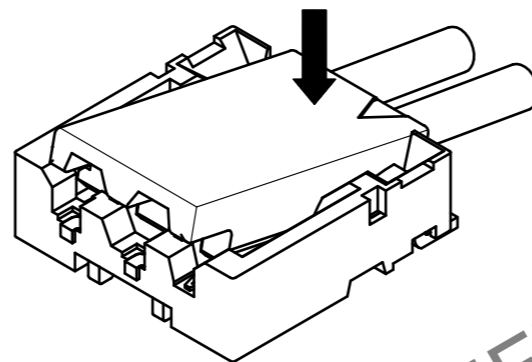


May.1.2024 Copyright 2024 HIROSE ELECTRIC CO., LTD. All Rights Reserved.
In case of consideration for using Automotive equipment / device which demand high reliability, kindly contact our sales window correspondents.

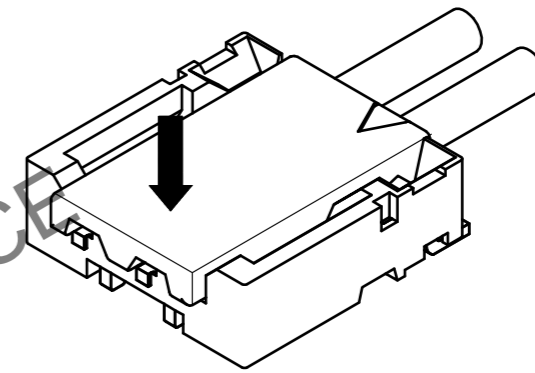
①By positioning the convexity of the socket sides to the header concavity, align the centers of the socket and the header in pitch direftion.



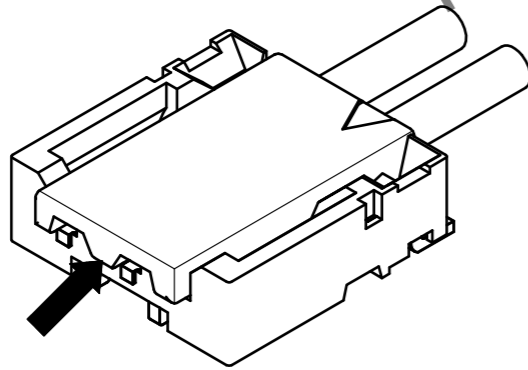
②Slightly press the socket down at cable side to tilted angle.



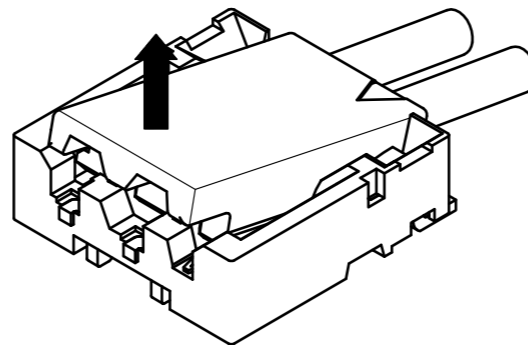
③Press down at the lever side with stabilizing the cable side to insert. Mating completes.



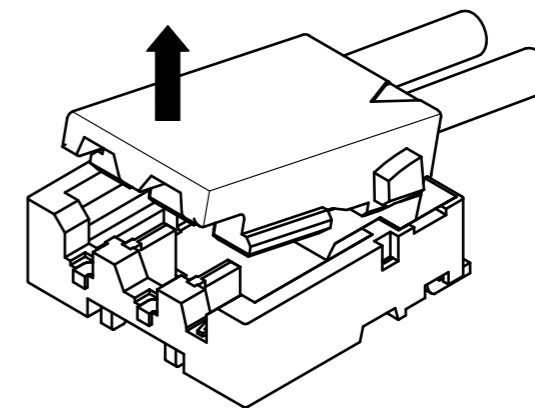
①Hook the lever with finger nail.



②Lift up to the upper difrection and friction lock is released.



③Lift up to the upper direction and positive lock is released. Removal completes.



HRS

DRAWING NO.	EDC-343908-21-01
PART NO.	DF57H-6P-1.2V(21)
CODE NO.	CL666-0108-8-21

3/3