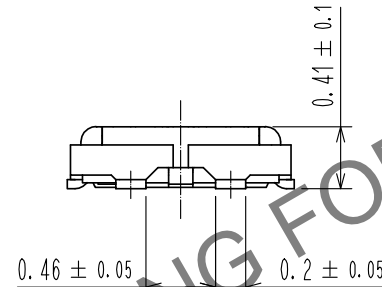
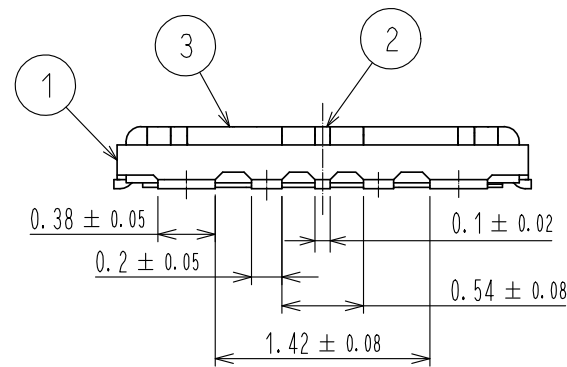
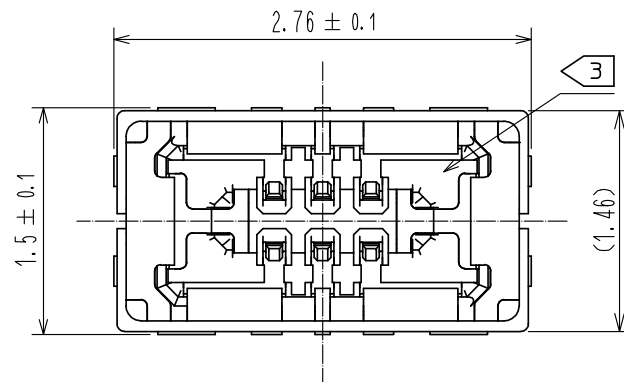
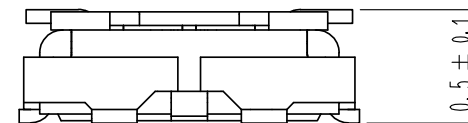


May.1.2024 Copyright 2024 HIROSE ELECTRIC CO., LTD. All Rights Reserved.  
In case of consideration for using Automotive equipment / device which demand high reliability, kindly contact our sales window correspondents.



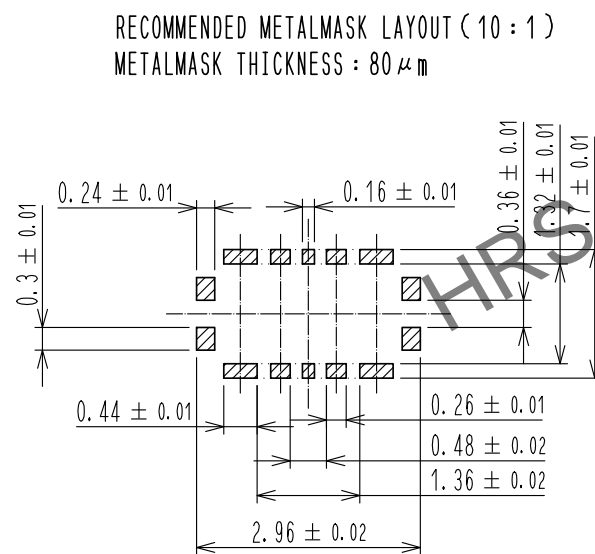
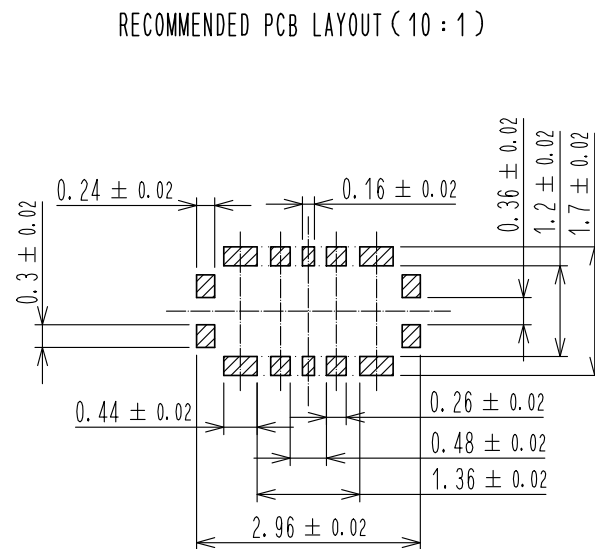
ENGAGEMENT FIGURE (30:1)



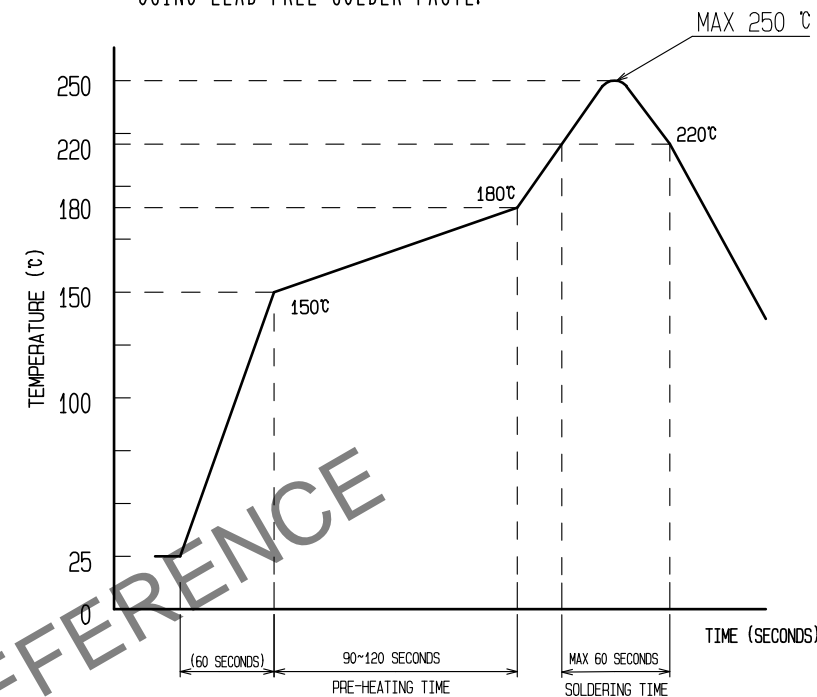
- NOTE 1 . All lead co-planarity shall be 0.08mm MAX.  
2 . Contact plating specifications  
Contact area : Gold 0.05 $\mu$ m MIN  
SMT lead : Gold 0.05 $\mu$ m MIN  
Under plating : Nickel 1 $\mu$ m MIN  
(Surface : Sealing)  
3 . CAV No. IS INDICATED IN APPROX. POSITION SHOWN.

3	COPPER ALLOY			7	PS	CLEAR. REINFORCEMENT COLLAR	
2	COPPER ALLOY			6	PS	BLACK. PLASTIC REEL	
1	LCP	UL94 V-0. BLACK		5	POLYESTER	CLEAR. COVER TAPE	
				4	PS	SMOKE GRAY. EMBOSSED CARRIER TAPE	
NO.	MATERIAL	FINISH . REMARKS		NO.	MATERIAL	FINISH . REMARKS	
UNITS mm				SCALE 20 : 1			
		COUNT	DESCRIPTION OF REVISIONS		DESIGNED	CHECKED	DATE
HIROSE ELECTRIC CO., LTD.		APPROVED	·WR. FUKUCHI	20220614	DRAWING NO. EDC-394051-51-00		
		CHECKED	·TY. 00I	20220613	PART NO. BM55R0. 5-2DS/2-0. 3V<51>		
		DESIGNED	·SH. HOSODA	20220613	CODE NO. CL0673-7800-0-51		
		DRAWN	·SH. HOSODA	20220613	1/3		

May.1.2024 Copyright 2024 HIROSE ELECTRIC CO., LTD. All Rights Reserved.  
In case of consideration for using Automotive equipment / device which demand high reliability, kindly contact our sales window correspondents.



4 RECOMMENDED REFLOW TEMPERATURE PROFILE  
USING LEAD-FREE SOLDER PASTE.



REFLOW METHOD:IR REFLOW  
NUMBER OF REFLOW CYCLES:2 CYCLES MAX.  
1)REFLOW TIME  
DURATION ABOVE 220°C, 60 SEC MAX.  
(PEAK TEMPERATURE:250°C MAX)  
2)PRE-HEAT TIME  
PRE-HEAT TEMPERATURE(MIN):150°C  
PRE-HEAT TEMPERATURE(MAX):180°C  
PRE-HEAT TIME:90-120 SEC.

- 4 THIS TEMPERATURE PROFILE IS PER THE CONDITIONS SHOWN ABOVE.  
ADDITIONAL FACTORS, SUCH AS SOLDER PASTE TYPE, PCB SIZE AND  
OTHER MOUNTED COMPONENTS COULD AFFECT THE PROFILE, THEREFORE,  
A THOROUGH EVALUATION OF MOUNTING CONDITION IS REQUIRED  
PRIOR TO PRODUCTION. TEMPERATURE IS MEASURED AT CONTACT LEAD.
5. PLEASE CONTACT US IN CASE YOU WILL MAKE DIFFERENT SETTINGS  
FROM OUR RECOMMENDATION.
6. THIS PRODUCT SATISFIES HALOGEN FREE REQUIREMENTS DEFINED AS  
900ppm MAXIMUM CHLORINE, 900ppm MAXIMUM BROMINE, AND 1500ppm  
MAXIMUM TOTAL OF CHLORINE AND BROMINE.
7. THIS PRODUCT COMPLY WITH RoHS.

HRS

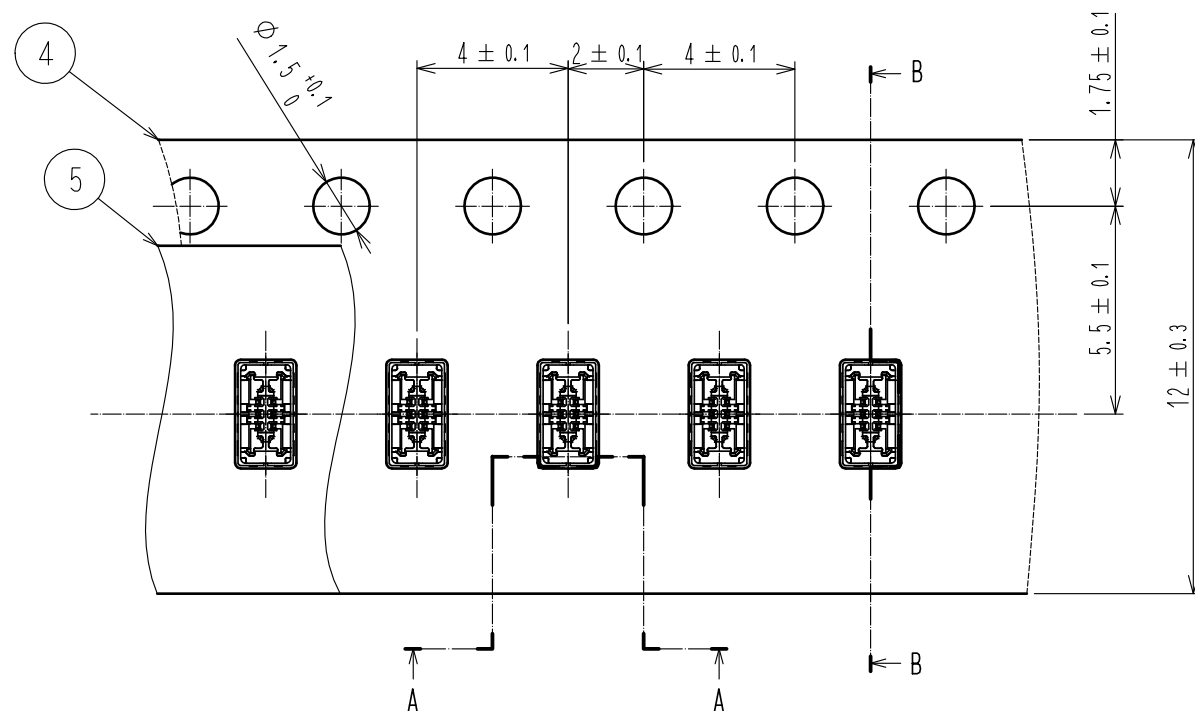
DRAWING NO.	EDC-394051-51-00
PART NO.	BM55R0. 5-2DS/2-0. 3V<51>
CODE NO.	CL0673-7800-0-51

2/3

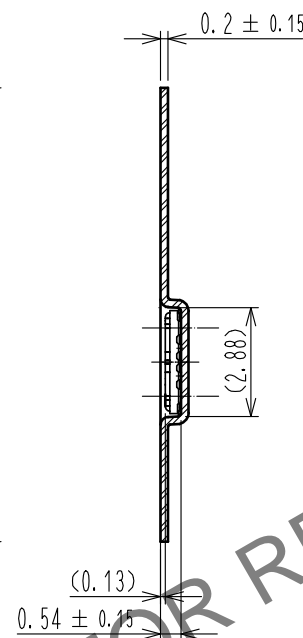
May.1.2024 Copyright 2024 HIROSE ELECTRIC CO., LTD. All Rights Reserved.  
In case of consideration for using Automotive equipment / device which demand high reliability, kindly contact our sales window correspondents.

## EMBOSSED CARRIER TAPE PACKAGING (5:1)

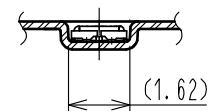
## STYLE AND DIMENSION OF REEL (FREE)



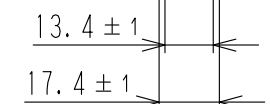
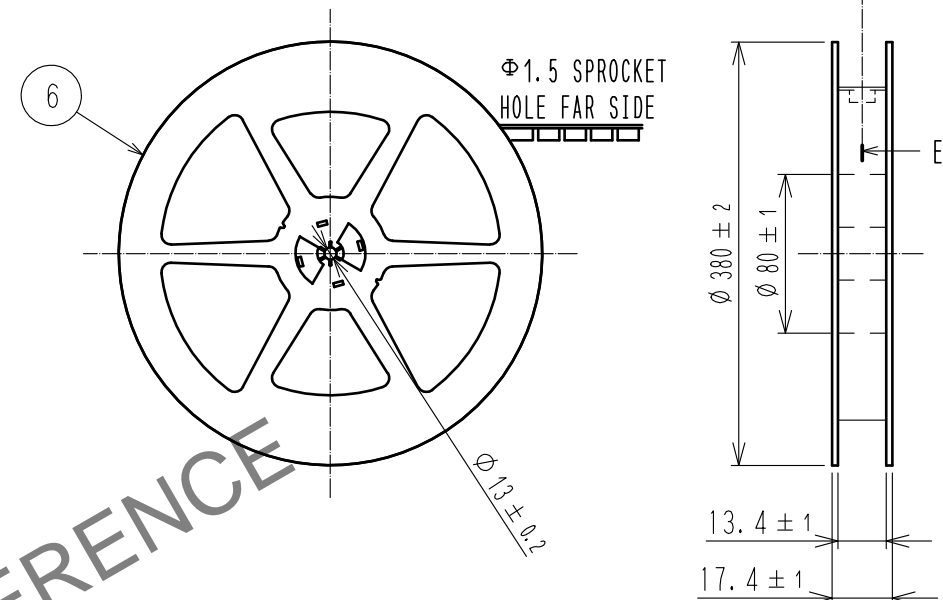
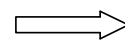
B-B (5:1)



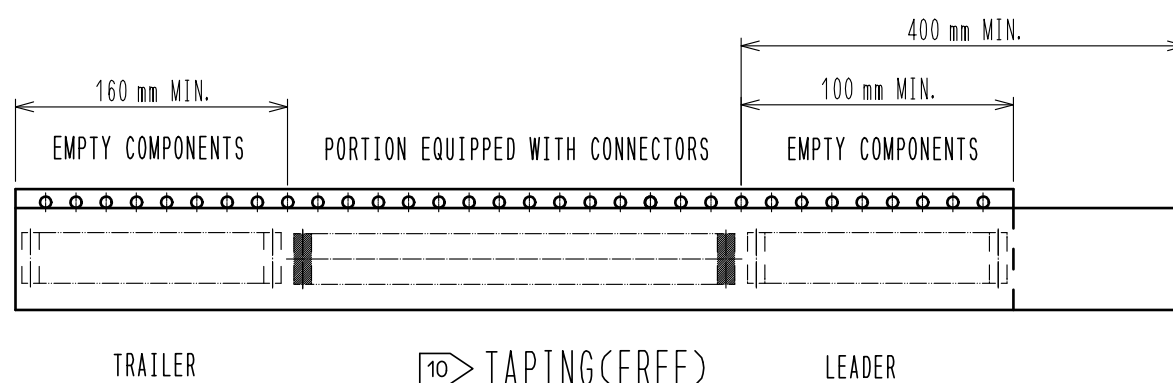
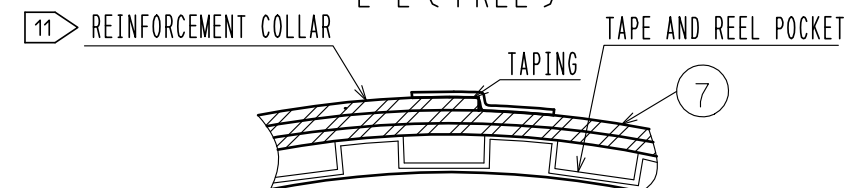
A-A (5:1)



DIRECTION OF UNREELING



E-E (FREE)



- 8 . PER REEL 30,000 CONNECTORS.  
9 . THE DIMENSIONS IN PARENTHESES ARE FOR REFERENCE.  
10 REFER TO IEC 60286-3 (PACKAGING OF COMPONENTS FOR AUTOMATIC HANDLING)  
11 AFTER PACKAGING, ROLL 2 METERS OF THE REINFORCEMENT COLLAR TO OUTER CIRCUMFERENCE OF TAPE AND REEL POCKET, AND TAPE DOWN AT THE END THE COLLAR.

HRS

DRAWING NO.	EDC-394051-51-00
PART NO.	BM55R0. 5-2DS/2-0. 3V<51>
CODE NO.	CL0673-7800-0-51

3/3