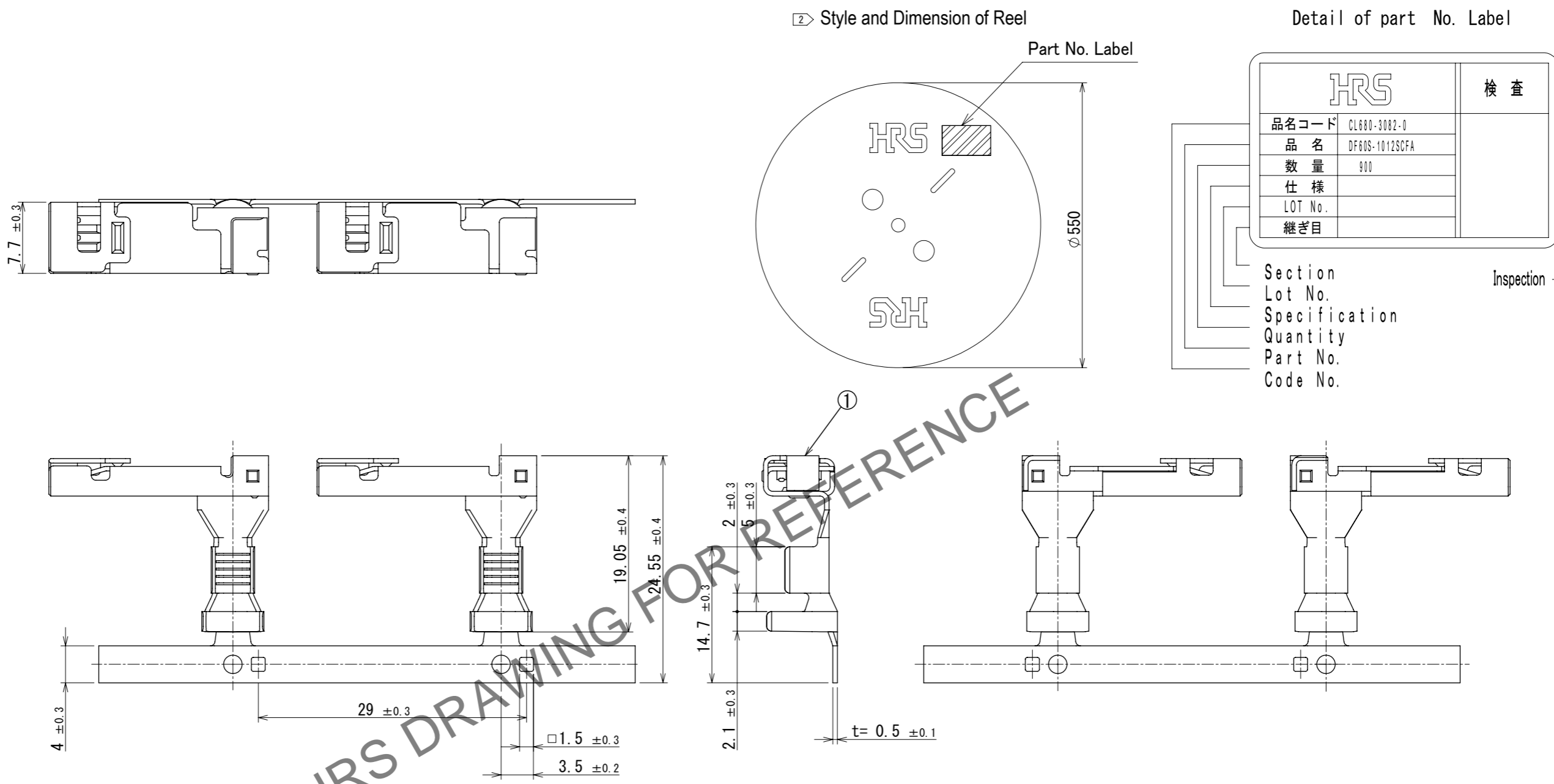


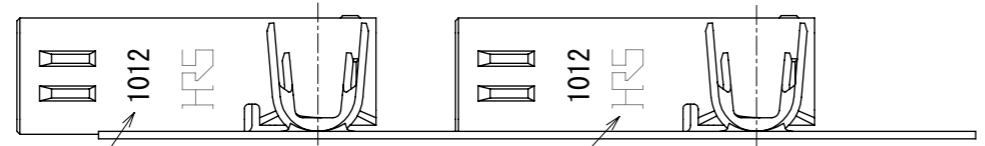
Aug.1.2024 Copyright 2024 HIROSE ELECTRIC CO., LTD. All Rights Reserved.
 In case of consideration for using Automotive equipment / device which demand high reliability, kindly contact our sales window correspondents.



Detail of part No. Label

HRS		検査
品名コード	CL680-3082-0	Inspection
品名	DF60S-1012SCFA	
数量	900	
仕様		
LOT No.		
継ぎ目		
Section		
Lot No.		
Specification		
Quantity		
Part No.		
Code No.		

HRS DRAWING FOR REFERENCE



- △ Note 1. 1RL:800 Contacts.
- ② Style of reel shows in figure.
- 3. Please make sure to check the form of crimping using a cable in adjusting an applicator.
- 4. Applicable cable is 10-12 AWG.
- 5. Refer to the technical specification (ETAP-H0824-00) for the packing type.
- 6. Please refer to the technical specification (ETAD-H0654-00, ETAD-H0653-00, ETAD-H1042-00) for handling.

1	Copper alloy	Contact area : Au plating 0.2μm min Wire barrel area : Sn plating 1 μm min Under plating : Ni plating 1 μm min
NO.	MATERIAL	FINISH , REMARKS

UNITS mm		SCALE 2:1	COUNT 1	DESCRIPTION OF REVISIONS DIS-H-00019416	DESIGNED KT. NUMATA	CHECKED TT. OHSAKO	DATE 2023. 11. 01
HRS HIROSE ELECTRIC CO., LTD.		APPROVED : SJ. OKAMURA	2023. 10. 19	DRAWING NO.	EDC-402623-00-00		
		CHECKED : TT. OHSAKO	2023. 10. 19	PART NO.	DF60S-1012SCFA		
		DESIGNED : KT. NUMATA	2023. 10. 18	CODE NO.	CL0680-3082-0-00		
		DRAWN : SK. CHIBA	2023. 10. 18				