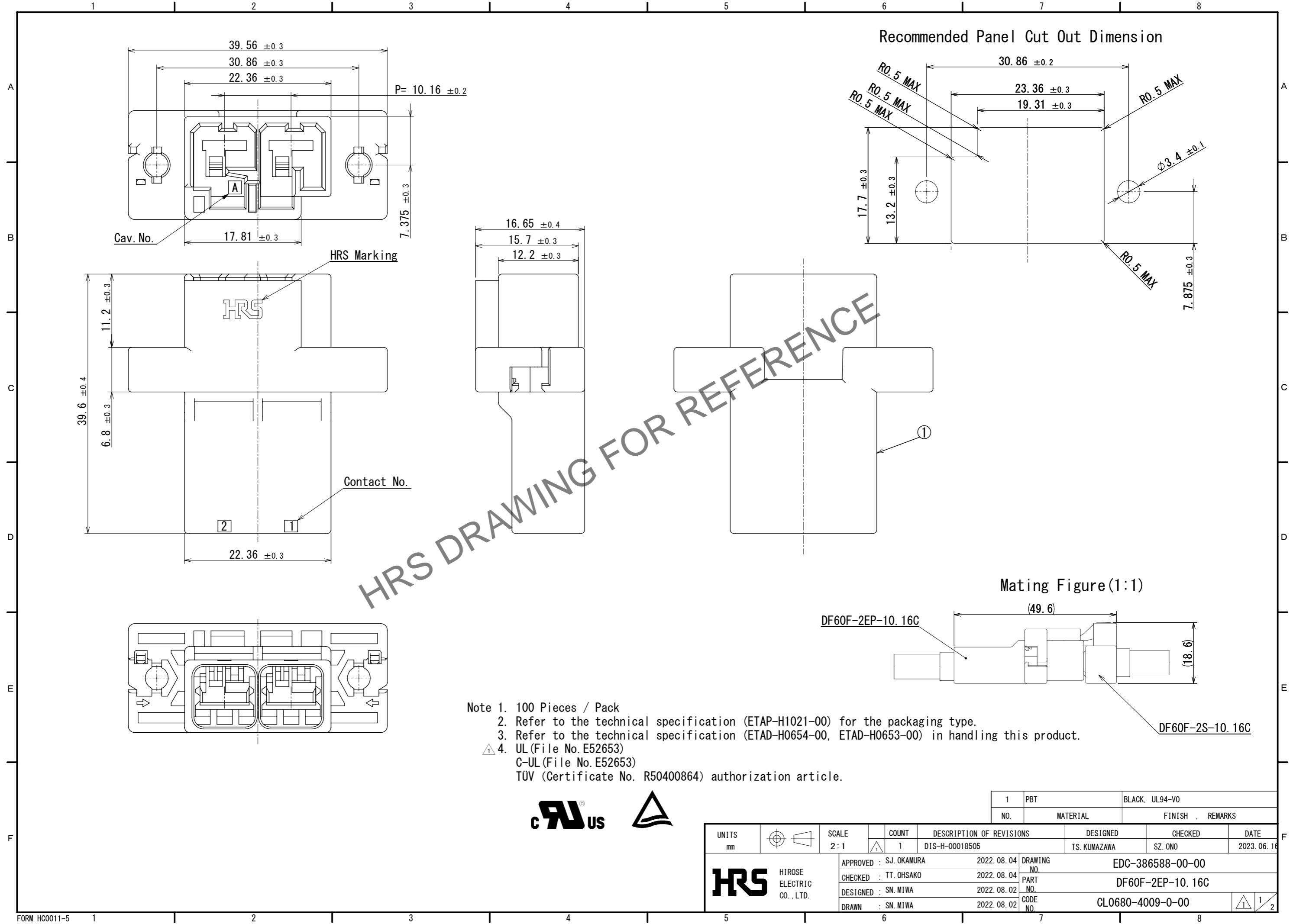


Sep.1.2024 Copyright 2024 HIROSE ELECTRIC CO., LTD. All Rights Reserved.
In case of consideration for using Automotive equipment / device which demand high reliability, kindly contact our sales window correspondents.



HRS DRAWING FOR REFERENCE

- Note 1. 100 Pieces / Pack
 2. Refer to the technical specification (ETAP-H1021-00) for the packaging type.
 3. Refer to the technical specification (ETAD-H0654-00, ETAD-H0653-00) in handling this product.
 ⚠ 4. UL (File No. E52653)
 C-UL (File No. E52653)
 TÜV (Certificate No. R50400864) authorization article.



UNITS mm	SCALE 2:1	COUNT 1	DESCRIPTION OF REVISIONS DIS-H-00018505	DESIGNED TS. KUMAZAWA	CHECKED SZ. ONO	DATE 2023.06.16
				1	PBT	BLACK, UL94-V0
HIROSE ELECTRIC CO., LTD.	APPROVED : SJ. OKAMURA	2022.08.04	DRAWING NO.	EDC-386588-00-00		
	CHECKED : TT. OHSAKO	2022.08.04	PART NO.	DF60F-2EP-10.16C		
	DESIGNED : SN. MIWA	2022.08.02	CODE NO.	CL0680-4009-0-00		
	DRAWN : SN. MIWA	2022.08.02				

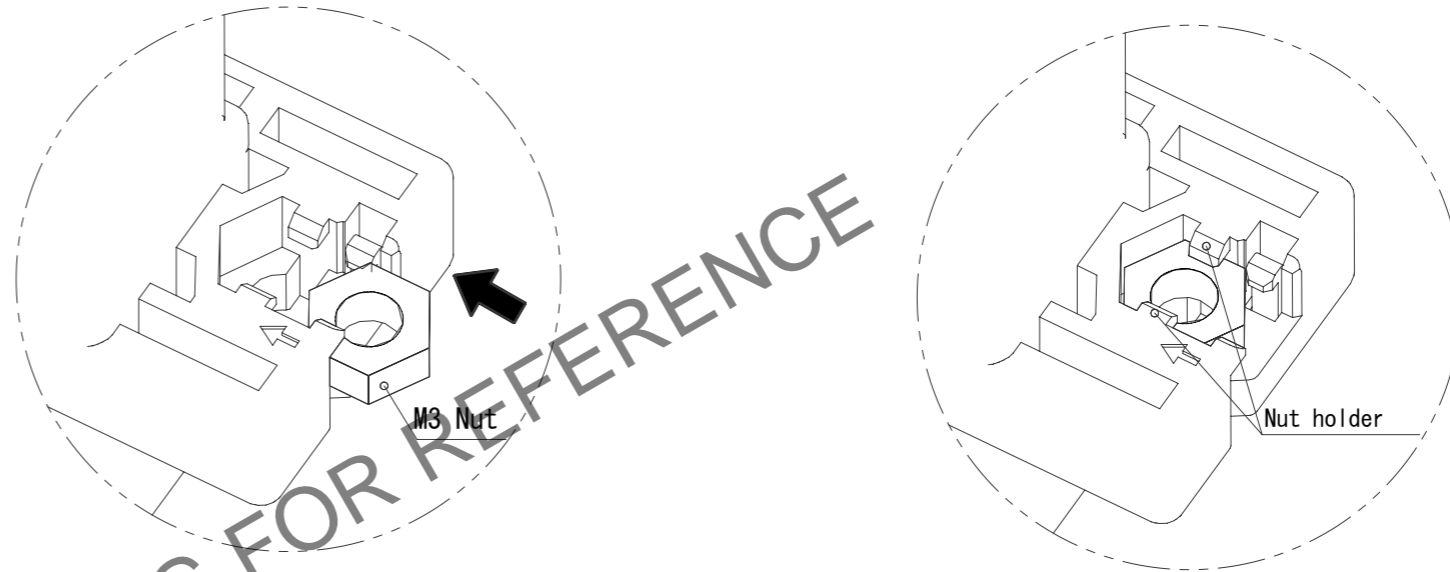
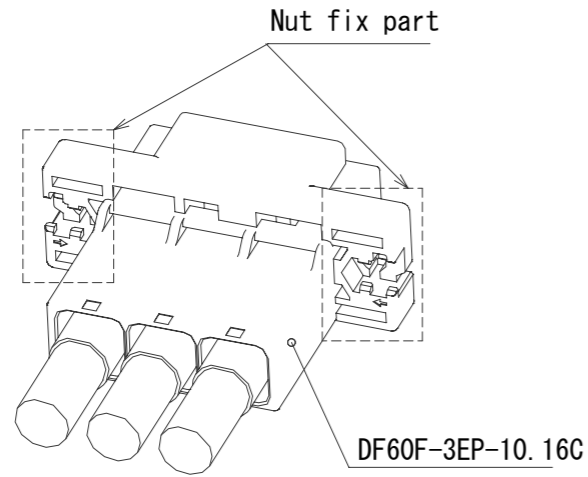
Sep.1.2024 Copyright 2024 HIROSE ELECTRIC CO., LTD. All Rights Reserved.
In case of consideration for using Automotive equipment / device which demand high reliability, kindly contact our sales window correspondents.

DF60F In-Line Type Recommended Panel Mounting Manual in Using Nuts

Nut insertion process

1. Slide the nut (size:M3) to the nut fix part.

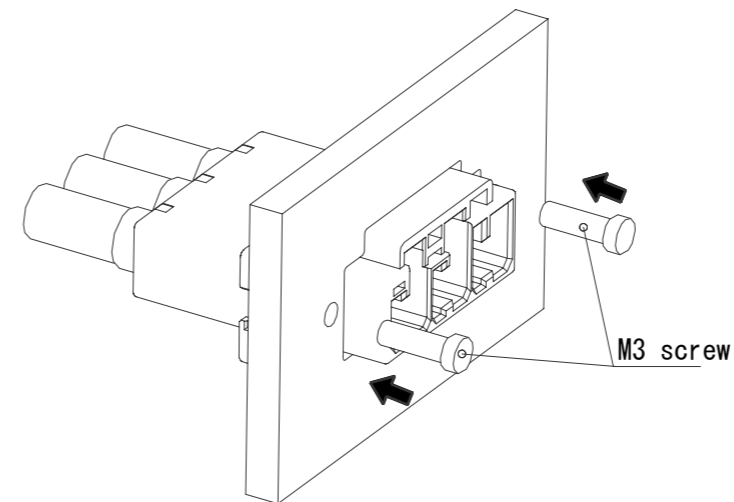
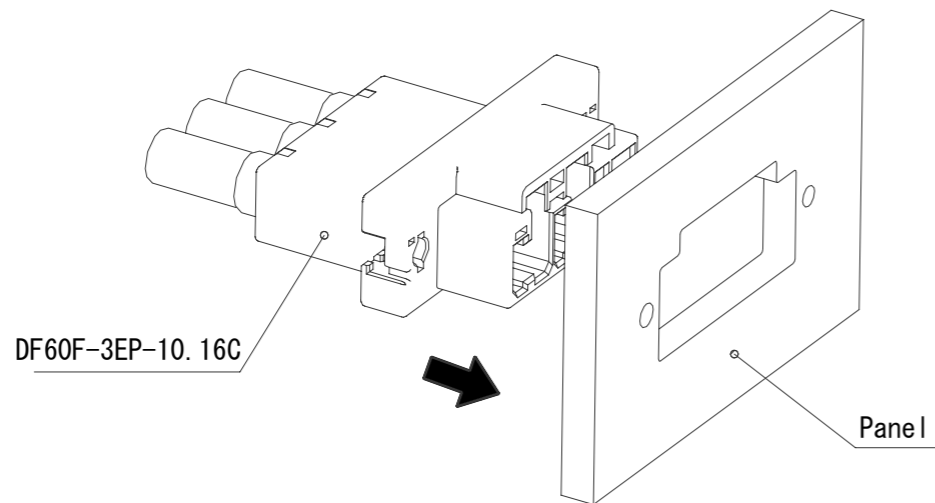
2. Press down the nut until it clicks.
Then, this sound means that the nut has inserted into the nut holder.

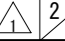


Panel mounting process

1. Insert connector into the panel cut out part.

2. Tighten a screw (size:M3) to fix with panel.
Recommended torque : Less than 0.49N · m



HRS	DRAWING NO.	EDC-386588-00-00		2/2
	PART NO.	DF60F-2EP-10.16C		
	CODE NO.	CL0680-4009-0-00		
	NO.			