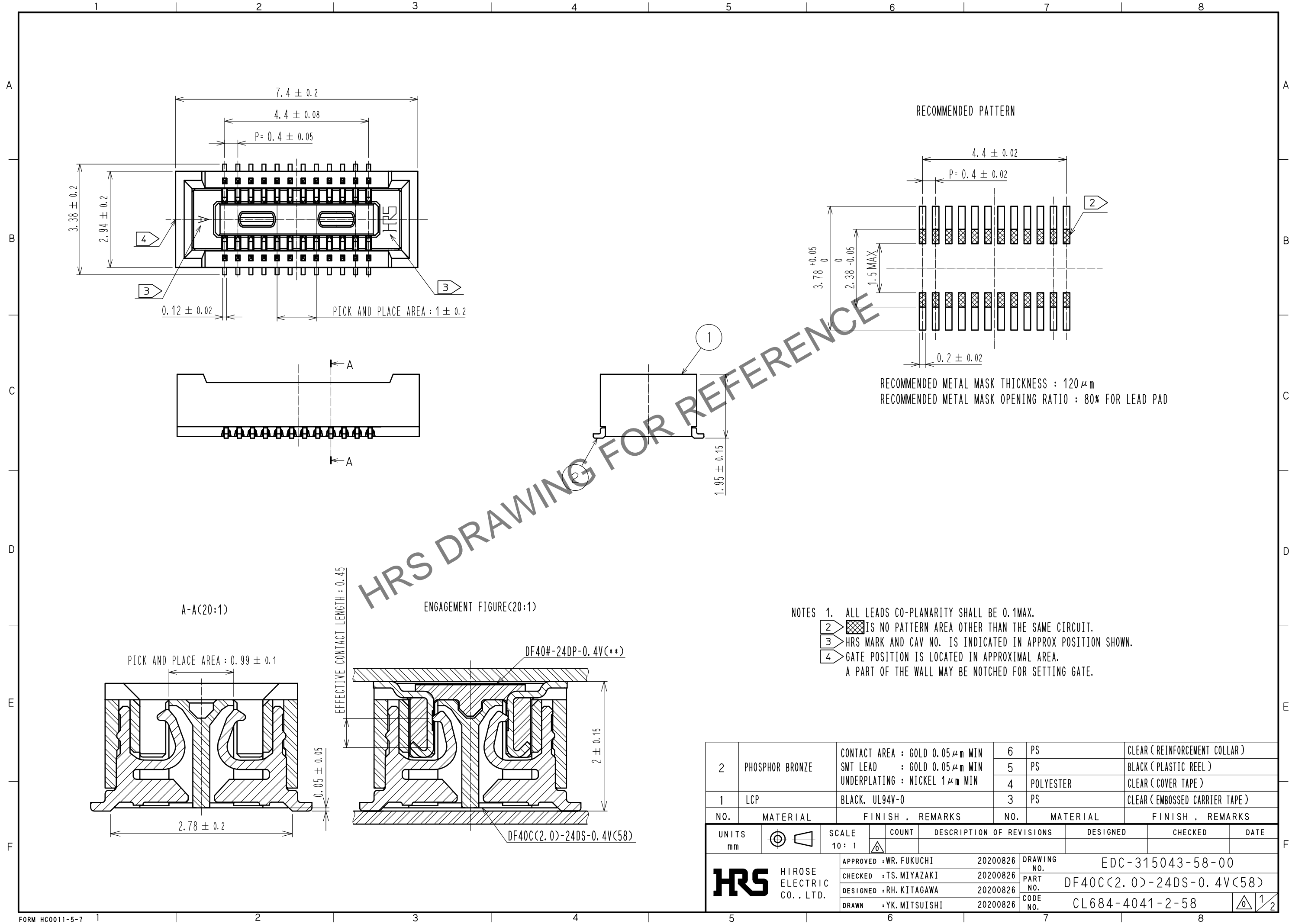


Oct.1.2024 Copyright 2024 HIROSE ELECTRIC CO., LTD. All Rights Reserved.  
 In case of consideration for using Automotive equipment / device which demand high reliability, kindly contact our sales window correspondents.



NO.	MATERIAL	FINISH .	REMARKS	NO.	MATERIAL	FINISH .	REMARKS
2	PHOSPHOR BRONZE	CONTACT AREA : GOLD 0.05 μm MIN SMT LEAD : GOLD 0.05 μm MIN UNDERPLATING : NICKEL 1 μm MIN		6	PS		CLEAR (REINFORCEMENT COLLAR)
				5	PS		BLACK (PLASTIC REEL)
				4	POLYESTER		CLEAR (COVER TAPE)
1	LCP	BLACK, UL94V-0		3	PS		CLEAR (EMBOSSED CARRIER TAPE)

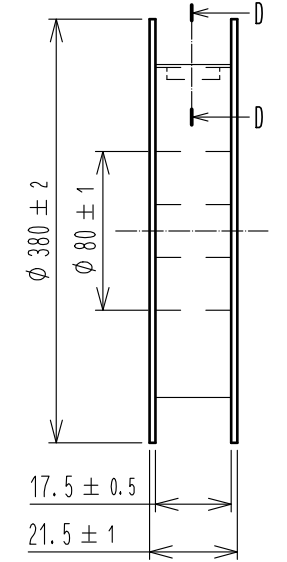
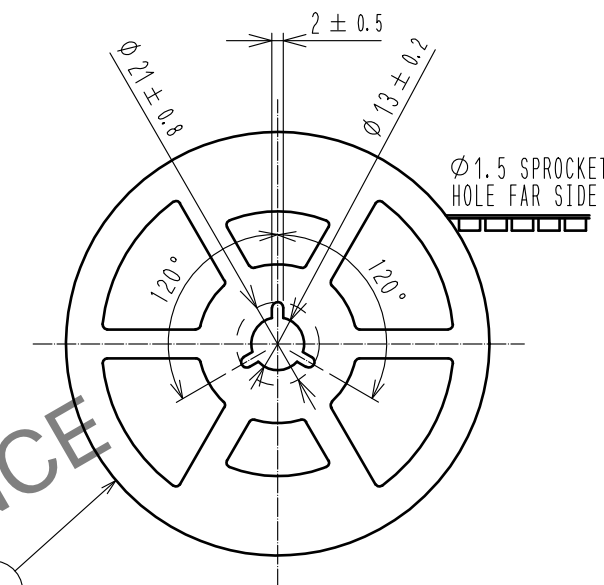
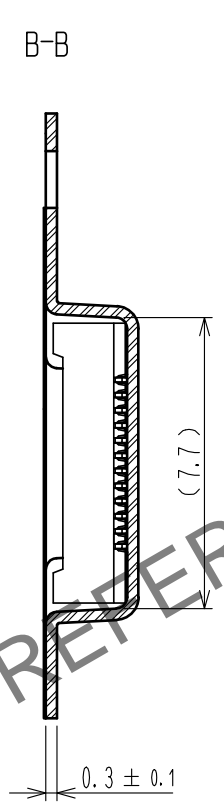
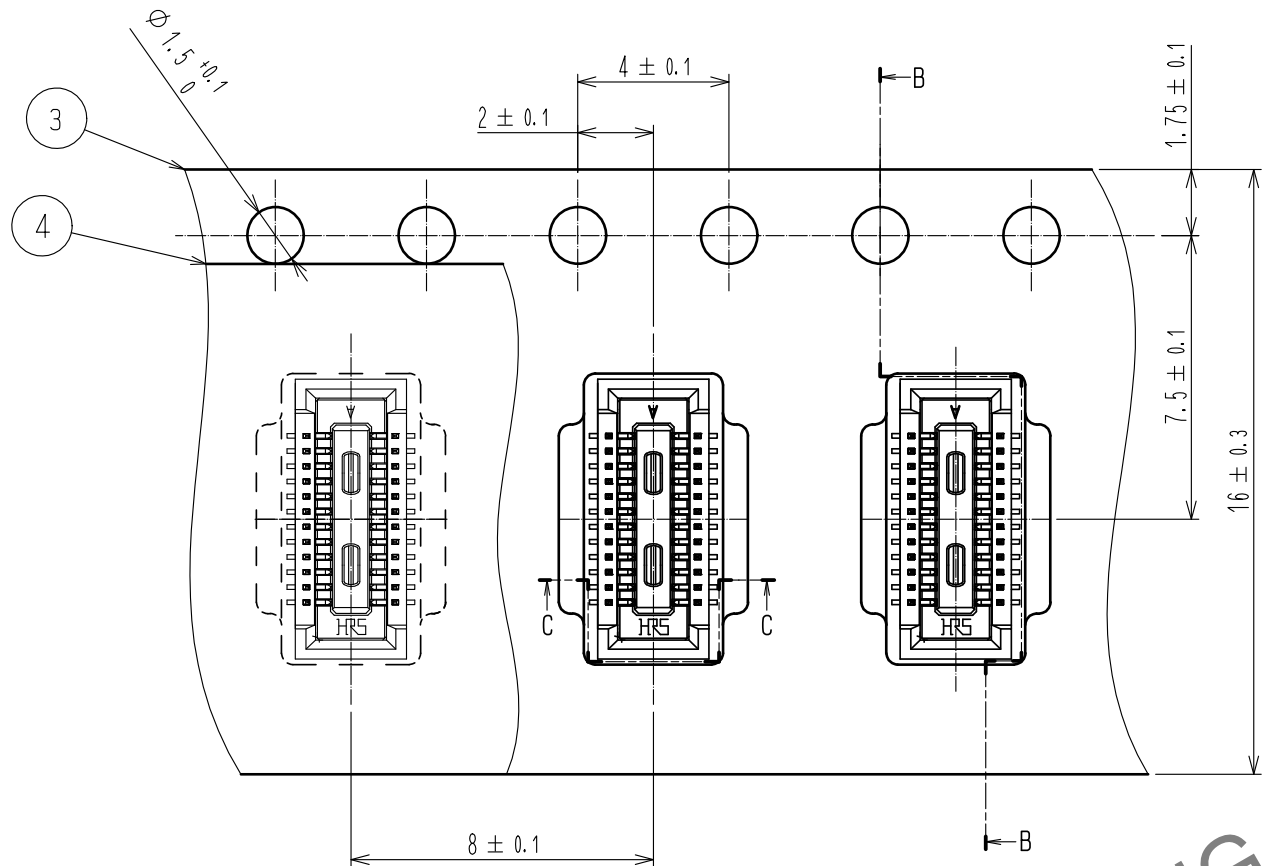
  

UNITS	SCALE	COUNT	DESCRIPTION OF REVISIONS	DESIGNED	CHECKED	DATE
mm	10:1	△				
APPROVED : WR. FUKUCHI 20200826			DRAWING NO. EDC-315043-58-00			
CHECKED : TS. MIYAZAKI 20200826			PART NO. DF40C(2.0)-24DS-0.4V(58)			
DESIGNED : RH. KITAGAWA 20200826			CODE NO. CL684-4041-2-58			
DRAWN : YK. MITSUISHI 20200826			1/2			

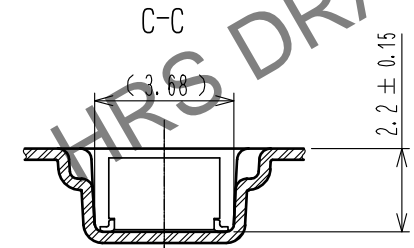
Oct.1.2024 Copyright 2024 HIROSE ELECTRIC CO., LTD. All Rights Reserved.  
 In case of consideration for using Automotive equipment / device which demand high reliability, kindly contact our sales window correspondents.

EMBOSSED CARRIER TAPE DIMENSIONS (5:1)

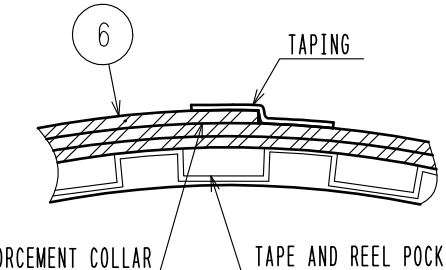
STYLE AND DIMENSION OF REEL (FREE SIZE)



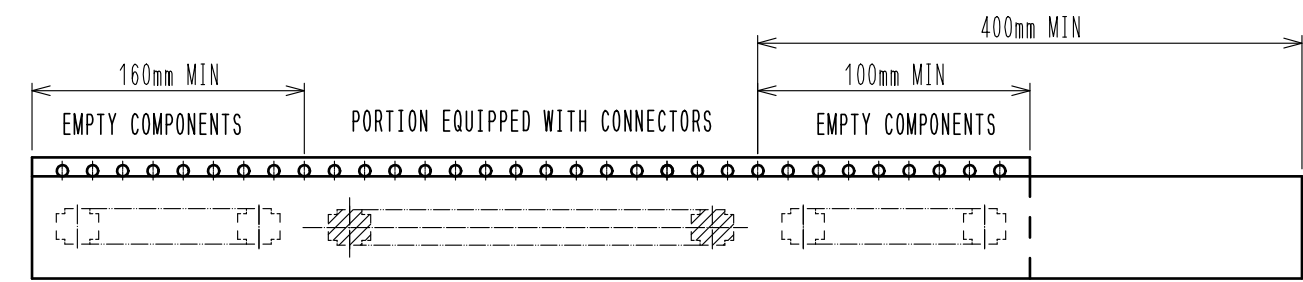
DIRECTION OF UNREELING



D-D (FREE)



- NOTES
5. PER REEL 1000 CONNECTORS.
  6. THE DIMENSIONS IN PARENTHESES ARE FOR REFERENCE.
  7. REFER TO JIS C 0806, IEC 60286-3. (PACKAGING OF COMPONENTS FOR AUTOMATIC HANDLING)
  8. AFTER PACKAGING, ROLL 2 METERS OF THE REINFORCEMENT COLLAR TO OUTER CIRCUMFERENCE OF TAPE AND REEL POCKET. AND TAPE DOWN AT THE END OF THE COLLAR.



TRAILER TAPING(FREE) LEADER

<b>HRS</b>	DRAWING NO.	EDC-315043-58-00
	PART NO.	DF40C(2.0)-24DS-0.4V(58)
	CODE NO.	CL684-4041-2-58
		$\triangle$ 2/2