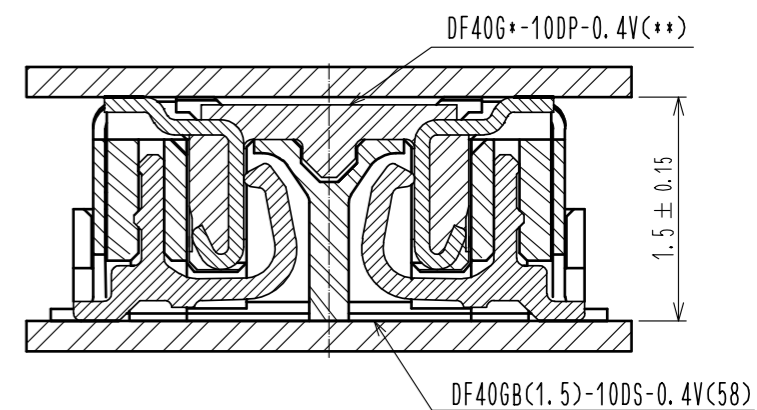
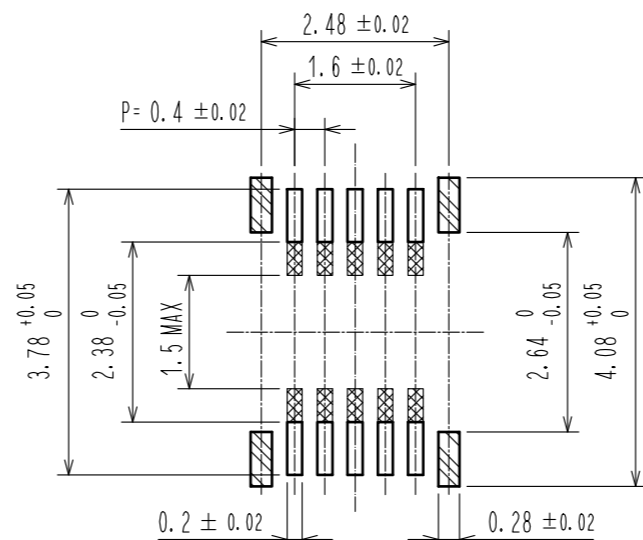
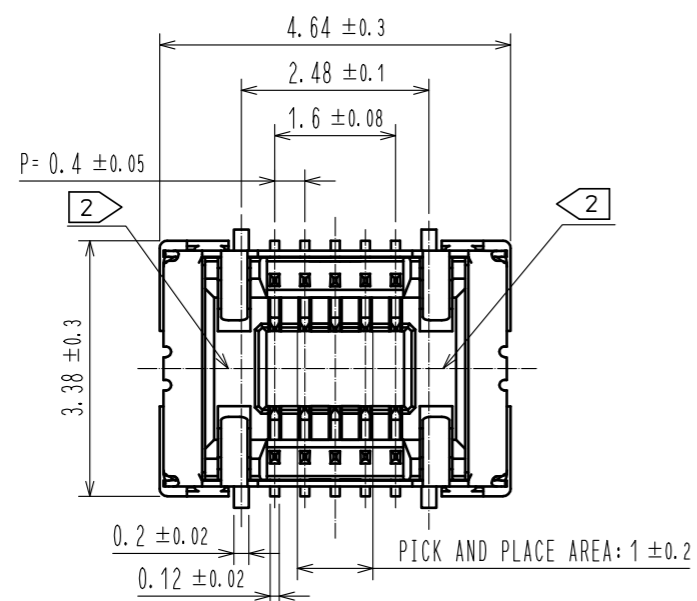


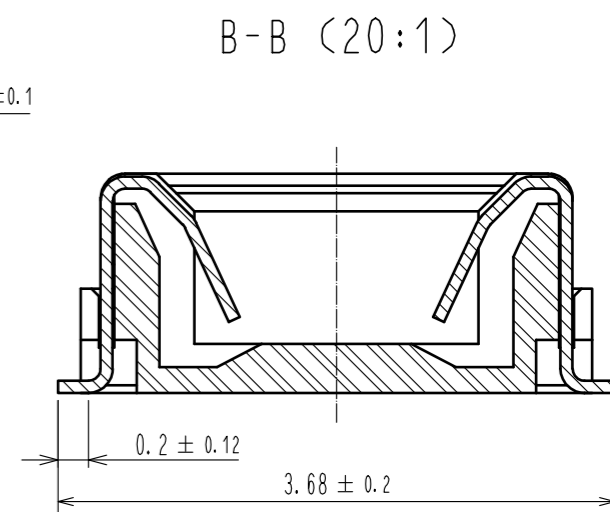
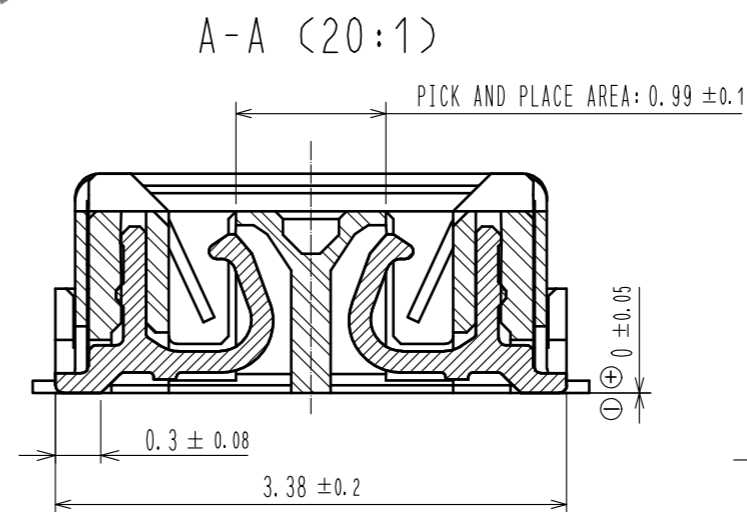
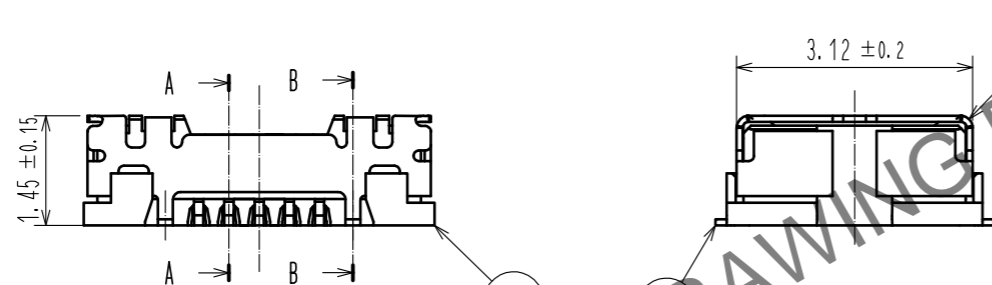
May.1.2024 Copyright 2024 HIROSE ELECTRIC CO., LTD. All Rights Reserved.
In case of consideration for using Automotive equipment / device which demand high reliability, kindly contact our sales window correspondents.

RECOMMENDED PATTERN (10:1)

ENGAGEMENT FIGURE (20:1)



□ : SIGNAL ▨ : GROUND ▩ : NON-CONDUCTIVE AREA
RECOMMENDED METAL MASK THICKNESS: 120 μm
RECOMMENDED MASK OPENING RATIO: 80% FOR LEAD PAD



NOTES 1. ALL LEADS CO-PLANARITY SHALL BE 0.1mm MAX.
2. HRS MARK AND CAV No. ARE INDICATED IN APPROX POSITION SHOWN.

2	PHOSPHOR BRONZE	CONTACT AREA: Au 0.05 μm MIN SMT LEAD: Au 0.05 μm MIN UNDERPLATING: NICKEL 1 μm MIN	7	PS	CLEAR (REINFORCEMENT COLLAR)		
1	LCP	BLACK, UL94V-0	6	PS	BLACK (PLASTIC REEL)		
			5	POLYESTER	CLEAR (COVER TAPE)		
			4	PS	CLEAR (EMBOSSED CARRIER TAPE)		
			3	PHOSPHOR BRONZE	CONTACT AREA: Au 0.05 μm MIN SMT LEAD: Au 0.05 μm MIN UNDERPLATING: NICKEL 1 μm MIN		
NO.	MATERIAL	FINISH . REMARKS	NO.	MATERIAL	FINISH . REMARKS		
UNITS	⊙	SCALE	COUNT	DESCRIPTION OF REVISIONS	DESIGNED	CHECKED	DATE
mm		10 : 1	△				
HRS HIROSE ELECTRIC CO., LTD.		APPROVED : MO. ISHIDA	15.07.01	DRAWING NO. EDC-359671-58-01			
		CHECED : TS. MIYAZAKI	15.07.01	PART NO. DF40GB(1.5)-10DS-0.4V(58)			
		DESIGNED : SH. HOSODA	15.07.01	CODE NO. CL684-4224-2-58			
		DRAWN : KR. AJITO	15.07.01	1/2			

