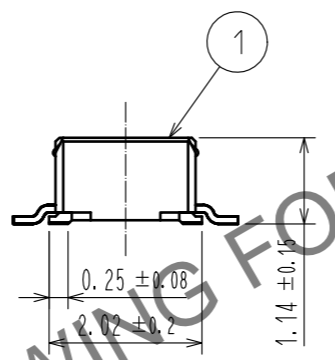
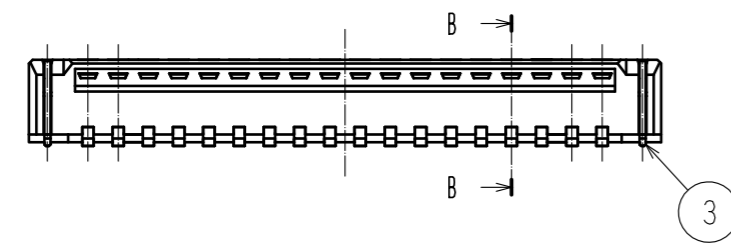
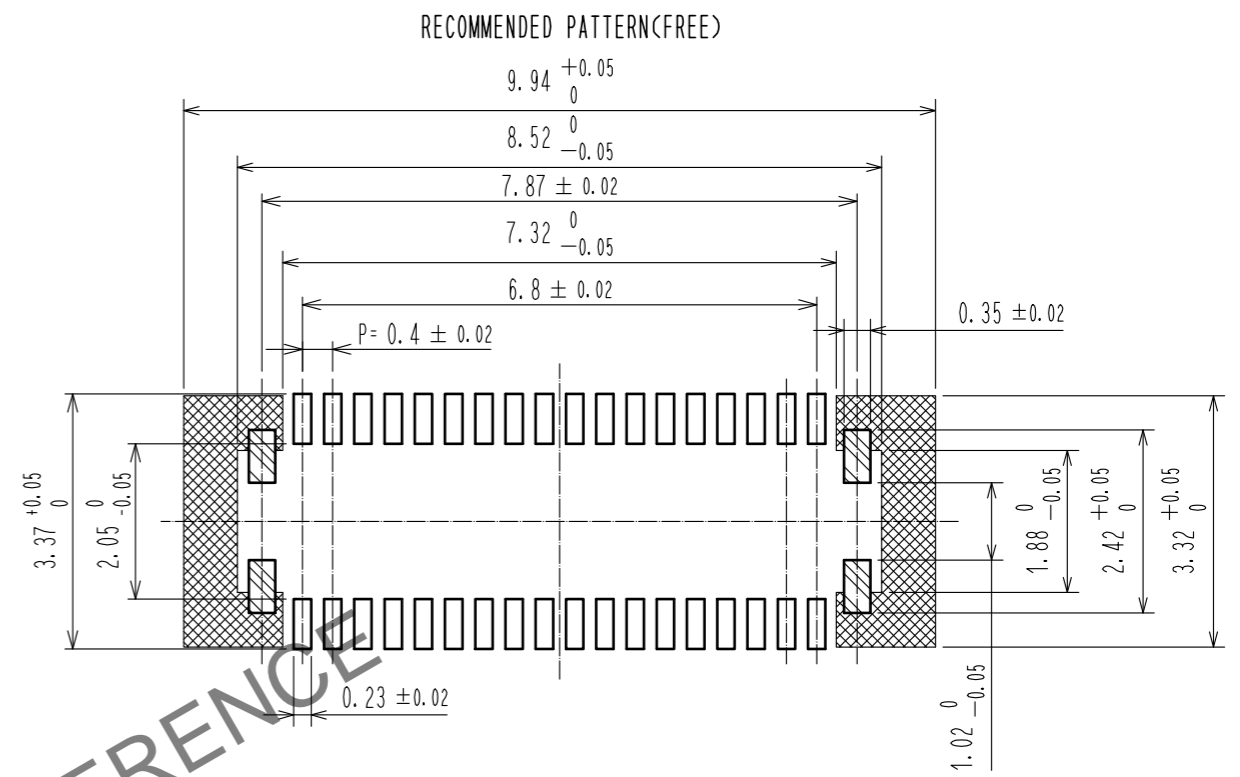
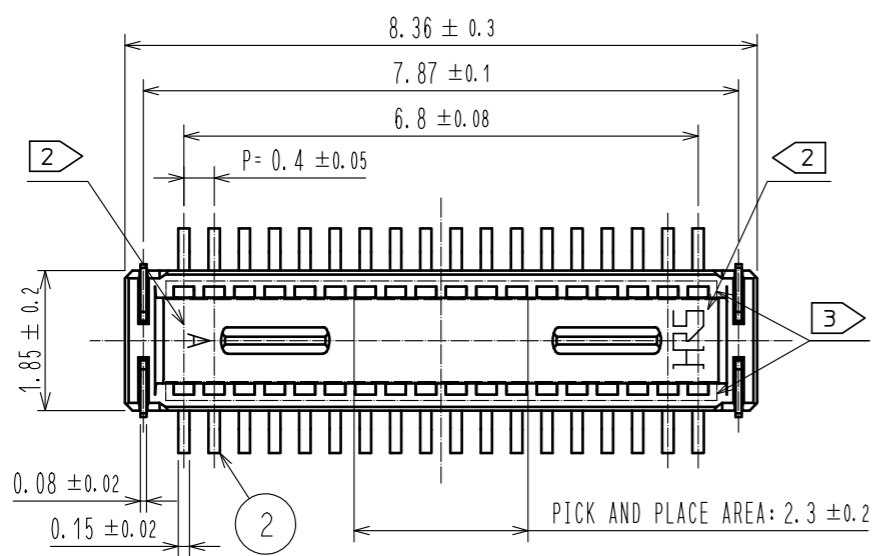
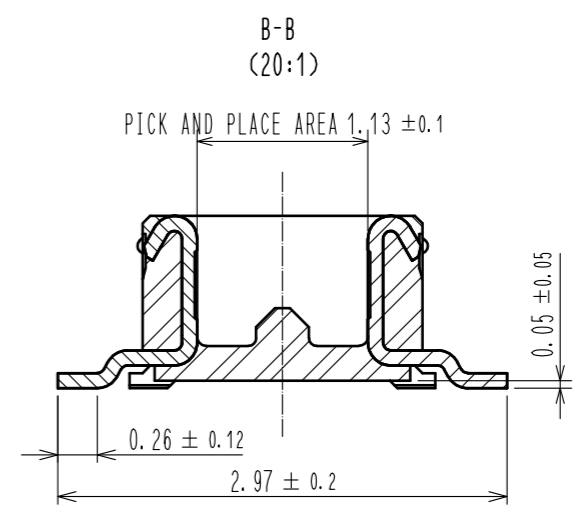


May.1.2024 Copyright 2024 HIROSE ELECTRIC CO., LTD. All Rights Reserved.
In case of consideration for using Automotive equipment / device which demand high reliability, kindly contact our sales window correspondents.



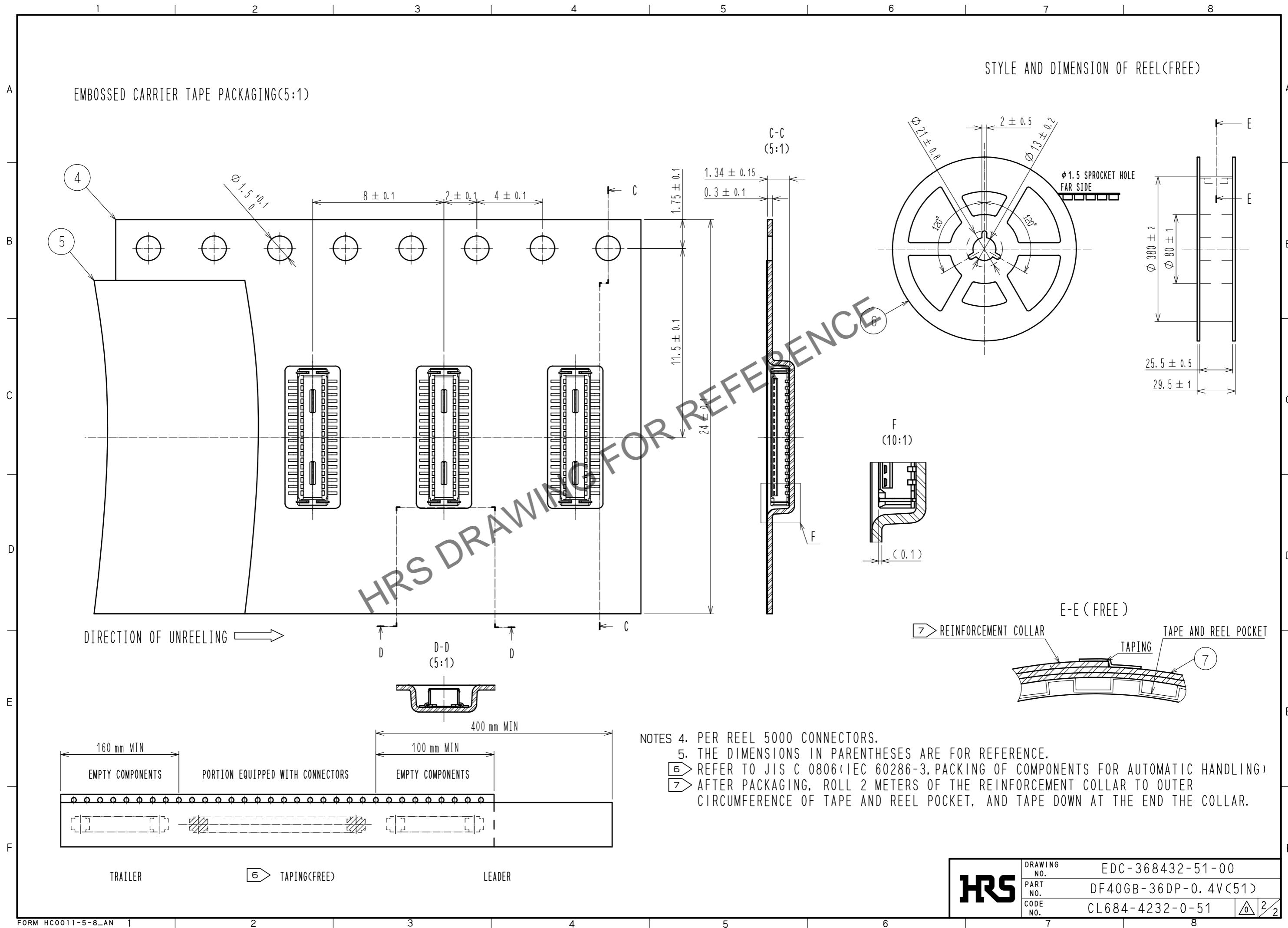
: SIGNAL
 : GROUND
 : NON-CONDUCTIVE AREA
 RECOMMENDED METAL MASK THICKNESS: 120 μm
 RECOMMENDED MASK OPENING RATIO: 80% FOR LEAD PAD



NOTES 1. ALL LEADS METAL FITTINGS CO-PLANARITY SHALL BE 0.1mm MAX.
 2 HRS MARK AND CAV NO. IS INDICATED IN APPROXIMAL POSITION SHOWN.
 3 THERE IS A POSSIBILITY THAT THE RESIN WILL BE EXPOSED AT THIS AREA, BUT THIS WILL NOT AFFECT THE CONTACT RELIABILITY.

2	PHOSPHOR BRONZE	CONTACT AREA: GOLD 0.05 μm MIN	7	PS	CLEAR(REINFORCEMENT COLLAR)
		SMT LEAD: GOLD 0.05 μm MIN	6	PS	BLACK(PLASTIC REEL)
		UNDERPLATING: NICKEL 1 μm MIN	5	POLYESTER	CLEAR(COVER TAPE)
1	LCP	BLACK, UL94V-0	4	PS	CLEAR(EMBOSSED CARRIER TAPE)
			3	PHOSPHOR BRONZE	CONTACT AREA: GOLD 0.05 μm MIN
					SMT LEAD: GOLD 0.05 μm MIN
					UNDERPLATING: NICKEL 1 μm MIN
NO.	MATERIAL	FINISH . REMARKS	NO.	MATERIAL	FINISH . REMARKS
UNITS		SCALE	COUNT	DESCRIPTION OF REVISIONS	
mm		10:1		DESIGNED	CHECKED
HRS HIROSE ELECTRIC CO., LTD.		APPROVED : WR. FUKUCHI 20200817	DRAWING NO. EDC-368432-51-00		
		CHECED : YK. SATAKE 20200817	PART NO. DF40GB-36DP-0.4V(51)		
		DESIGNED : PAN YIWEI 20200817	CODE NO. CL684-4232-0-51		
		DRAWN : PAN YIWEI 20200817	1/2		

May.1.2024 Copyright 2024 HIROSE ELECTRIC CO., LTD. All Rights Reserved.
 In case of consideration for using Automotive equipment / device which demand high reliability, kindly contact our sales window correspondents.



HRS	DRAWING NO.	EDC-368432-51-00
	PART NO.	DF40GB-36DP-0.4V(51)
	CODE NO.	CL684-4232-0-51
		2/2