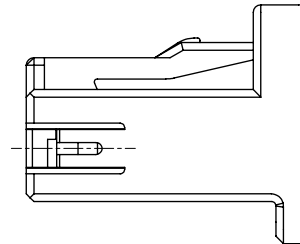
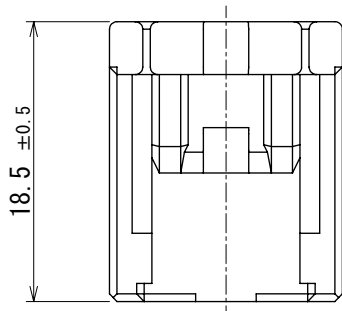
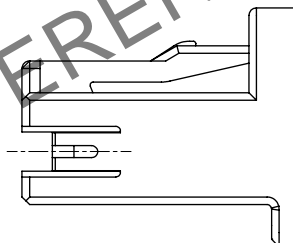
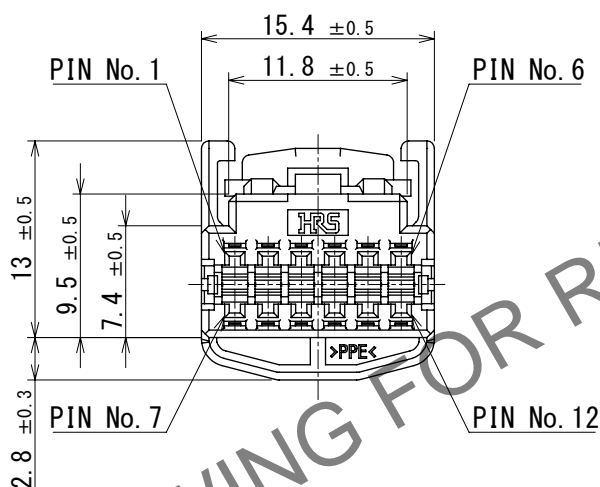


May.1.2024 Copyright 2024 HIROSE ELECTRIC CO., LTD. All Rights Reserved.
In case of consideration for using Automotive equipment / device which demand high reliability, kindly contact our sales window correspondents.

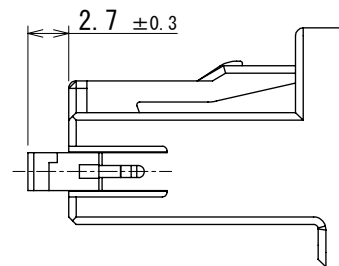
ELV, RoHS COMPLIANT



2 RETAINER COMPLETELY ASSEMBLED CONDITION



1 RETAINER PRESET CONDITION



NOTE. 1 Use this product with retainer GT25-12DS-R preset.

Retainer GT25-12DS-R product No. : CL0775-0041-8

NOTE. 2 RETAINER TO BE COMPLETELY ASSEMBLED INTO POSITION AFTER CONTACT IS INSERTED.

NOTE. 3 PLEASE REFER TO INSTRUCTION SHEET ETAD-T0329-00 BEFORE USE.

1	PPE	BLACK						
NO.	MATERIAL	FINISH	REMARKS	NO.	MATERIAL	FINISH	REMARKS	
UNITS mm		SCALE 2:1	COUNT 1	DESCRIPTION OF REVISIONS DIS-T-00017996		DESIGNED AN. SAIKI	CHECKED TY. MOGI	DATE 2023. 07. 21
HIROSE ELECTRIC CO., LTD.		APPROVED : AR. SHIRAI		2017. 04. 20	DRAWING NO. EDC-168735-50-00			
		CHECKED : HS. OZAWA		2017. 04. 20	PART NO. GT25-12DS-HU (50)			
		DESIGNED : TK. SHISHIKURA		2017. 04. 20	CODE NO. CL0775-0037-0-50			
		DRAWN : TK. SHISHIKURA		2017. 04. 20				