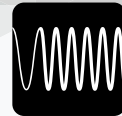


1.85mm Series

# 1.85mm Coaxial Connectors IEC Standard Compliant



Millimeter Wave



COAX 1.85mm



IEC Standard



## Features

---

1. IEC standard compliant 1.85mm coaxial connector (IEC 61169-32)
2. Supports up to 65GHz frequency
3. Board receptacle is screw-mounted.
  - Provides excellent high frequency performance and consistent mounting quality
  - Reusable
  - Reduces mounting complexity (No Soldering is required)
  - Compatible with various PCB thicknesses
4. Field Replaceable connectors are suitable for RF modules in ruggedized applications
5. Cable assembly uses 0.085 inch flexible cable
6. Terminator is also available.
7. RoHS2 compliant

## Applications

Evaluation Board RF testing port use, radio communication equipment, measuring instruments, RF module, radio frequency power amplifier, high speed router, high speed switch, broadcasting equipment, etc.

## Product Specifications

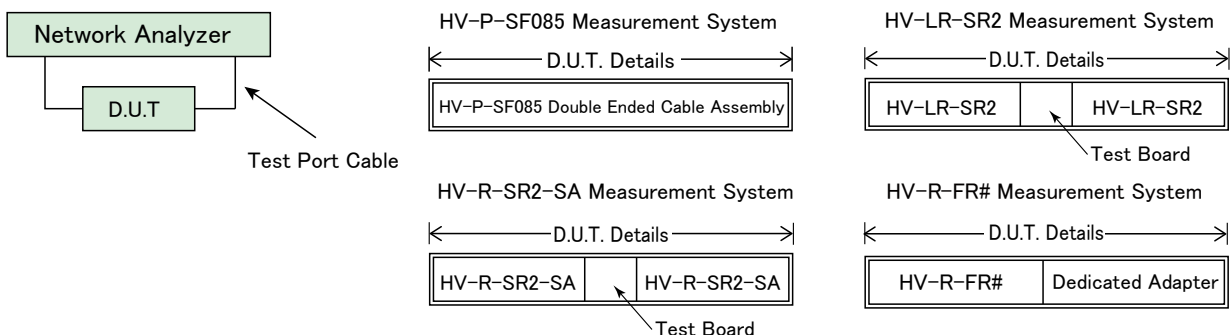
Nominal Characteristic Impedance	50 $\Omega$	Operating Temperature	-55 to +105°C (95% RH Max.)
Rated Frequency	0 to 65GHz	Storage Temperature Range	-55 to +50°C (95% RH Max.)

Items	Specifications	Conditions
Contact Resistance	Center : 4m $\Omega$ Max. External : 2m $\Omega$ Max.	Measured at 100mA Max.
Insulation Resistance	1000M $\Omega$ Min.	Measured at 100V DC
Withstanding Voltage	No breakdown	200V AC for 1 min.
V.S.W.R.*	● HV-P-SF085 V.S.W.R. : 1.35 Max. (0 to 40GHz) V.S.W.R. : 1.45 Max. (40 to 67GHz)	
	● HV-LR-SR2 V.S.W.R. : 1.5 Max. (0 to 65GHz)	
	● HV-R-SR2-SA V.S.W.R. 1.5 Max. (0 to 50GHz) V.S.W.R. 1.8 Max. (50 to 67GHz)	
	● HV-R-FR#(##) V.S.W.R. 1.3 Max. (0 to 50GHz) V.S.W.R. 1.5 Max. (50 to 60GHz) V.S.W.R. 1.7 Max.(60 to 67GHz)	
Mating Durability	Contact resistance Center : 6m $\Omega$ Max. External : 4m $\Omega$ Max. No broken, cracked, or loose parts	500 times
Vibration Resistance	No electrical discontinuity for more than 1 $\mu$ s. No broken, cracked, or loose parts	Frequency : 10 to 500Hz, half amplitude : 0.75mm, Acceleration : 196m/s <sup>2</sup> , 10 cycles in each of the 3 axis
Shock Resistance	No electrical discontinuity for more than 1 $\mu$ s. No broken, cracked, or loose parts	Acceleration : 980m/s <sup>2</sup> , duration : 6ms, Wave form : half-sine wave, 3 times in each of the 3 axis
Moisture Resistance of Temperature/Humidity Cycle	Insulation resistance : 100M $\Omega$ Min. (in a high humidity environment) Insulation resistance : 1000M $\Omega$ Min. (in a dry environment) No broken, cracked or loose parts	Left for 10 cycles (240 hours) in an environment with the temperature ranging from -10 to +65°C and the humidity ranging from 90 to 96%.
Temperature Cycle	No broken, cracked or loose parts	5 cycles of the following test series condition : Temperature : -55°C → -°C → +105°C → -°C Time : 30 min. → 3 min. → 30 min. → 3 min.
Salt Spray	No considerable corrosion	Continuous 48 hour cycle in 5% salt water solution

Note : Information contained in this catalog represents general requirements for this Series. Contact us for the drawings and specifications for a specific part number shown.

### \* V.S.W.R. (Voltage Standing Wave Ratio) Measurement System

The above V.S.W.R. specification values were measured using the measurement system shown below.



## Materials / Finish

Part	Materials	Finish
Shell	Stainless Steel / Brass	Passivated / Gold Plated / Nickel Plated
Insulator	PTFE Resin / PEI Resin	-
Contact	Beryllium Copper	Gold Plated

## Product Number Structure

Refer to the chart below when determining the product specifications from the product number.

### ■ Plug (Cable Harness)

**HV - 2P - IW - A - 6IN**

①      ②      ③      ④

① Series Name	HV	③ Cable Type	0.085 inch, Flexible Cable
② Assembly Type	Double-ended Straight Plug Cable Assembly	④ Total Length (inch)	6, 12, 24, 36, 48 inch

Note : Plugs can be ordered only as terminated cable assemblies.

### ■ Receptacle (For High Speed Transmission Evaluation Board)

**HV - R - SR2 - SA (##)**

①      ②      ③      ④      ⑤

① Series Name	HV	④ Other Specifications	Characters are added to indicate other specifications as needed.
② Connector Type	LR : End Launch Receptacle R : Receptacle	⑤ Attached Screw	(00) : - (11) : 0-80UNF 1/4 inch (12) : 0-80UNF 3/16 inch (15) : 0-80UNF 1/4 + 3/16 inch
③ Board Mounting Method	PCB Screw Mounting		

### ■ Receptacle (Field Replaceable)

**HV - R - FR2 (##)**


①      ②      ③      ④

① Series Name	HV	③ Board Mounting Method	FR2 : 2-hole Field Replaceable
② Connector Type	R : Receptacle	④ Attached Screw Pitch	

## Functional Diagram

**Plug Side**

- Straight Plug  
HV-P-SF085



**Receptacle Side**

- PCB Vertical Mount Receptacle  
HV-R-SR2-SA

- PCB End Launch Receptacle  
HV-LR-SR2




  

- Field-replaceable Receptacle  
HV-R-FR2




**Adapter**

- Conversion Adapter
- SMPM Jack — 1.85mm Jack  
SMPMJ-HVJ
- SMPM Plug — 1.85mm Plug  
SMPMP(FD)-HVP  
SMPMP(SB)-HVP

**Non-reflective Terminator**

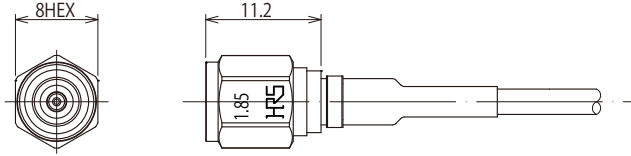
- Plug  
HV-TMP-1



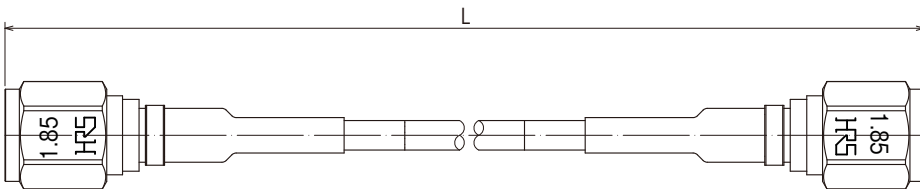
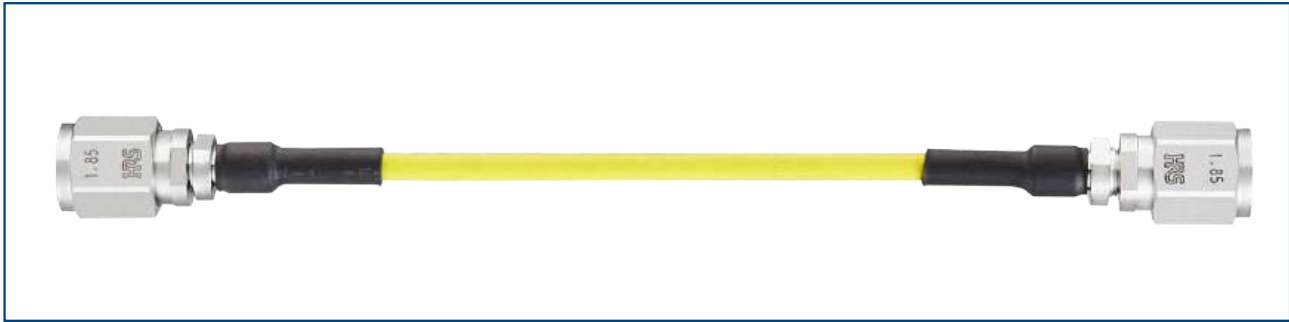
## Plug

Plugs can be ordered only as terminated cable assemblies.

### ●HV-P-SF085



## Cable Harness (HV Straight Plug - HV Straight Plug)

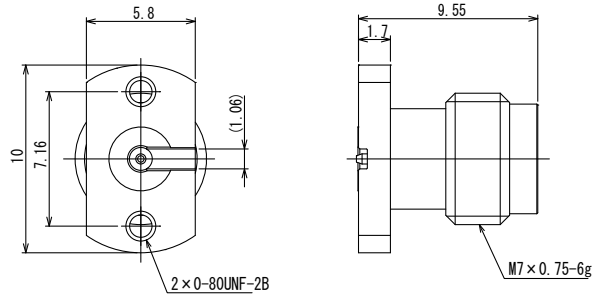


Part No.	HRS No.	Cable Assembly Length L : inch	Cable Assembly Length L : mm	Purchase Unit
HV-2P-IW-A-6IN	CL0321-6633-0-01	6 ± 0.16	152.4 ± 4	20pcs per bag
HV-2P-IW-A-12IN	CL0321-6633-0-02	12 ± 0.32	304.8 ± 8	
HV-2P-IW-A-24IN	CL0321-6633-0-03	24 ± 0.48	609.6 ± 12	
HV-2P-IW-A-36IN	CL0321-6633-0-04	36 ± 0.48	914.4 ± 12	10pcs per bag
HV-2P-IW-A-48IN	CL0321-6633-0-05	48 ± 0.71	1219.2 ± 18	

## PCB Vertical Mount Receptacle (for High Speed Transmission Evaluation Board)

This product is a solderless mounted connector for prototype evaluation of high speed transmission boards. It is not recommended for use in actual commercial equipment.

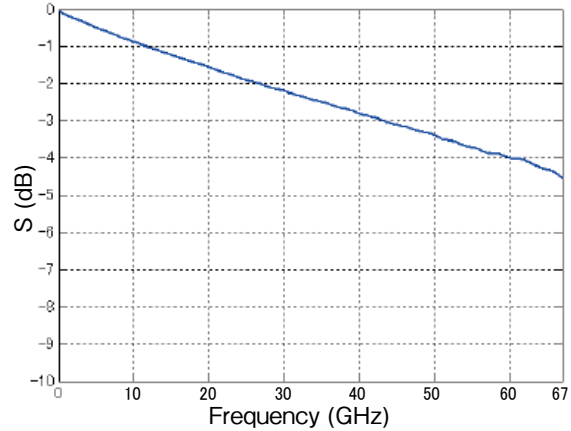
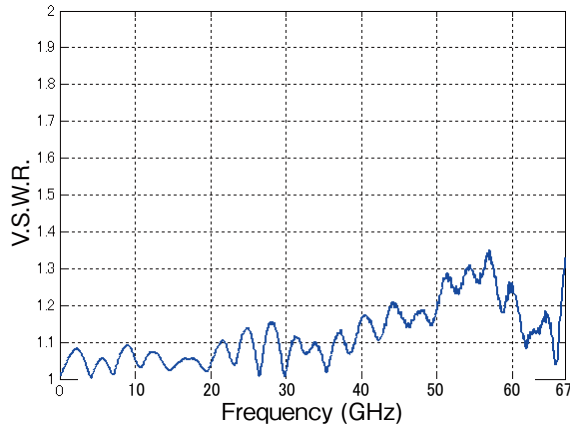
### ● Inner Layer, Back Surface, Top Surface Trace Type



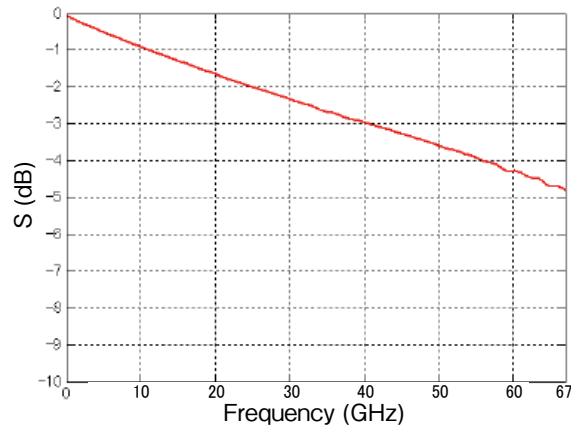
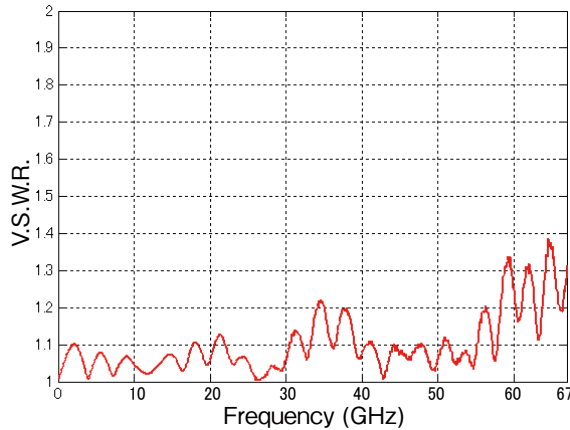
Part No.	HRS No.	Attached Screw	Purchase Unit
HV-R-SR2-SA	CL0338-0030-0-00	-	20pcs per bag
HV-R-SR2-SA(15)	CL0338-0030-0-15	0-80UNF 1/4 + 3/16 inch	

### ◆ Frequency Characteristics (TYPICAL)

Surface substrate



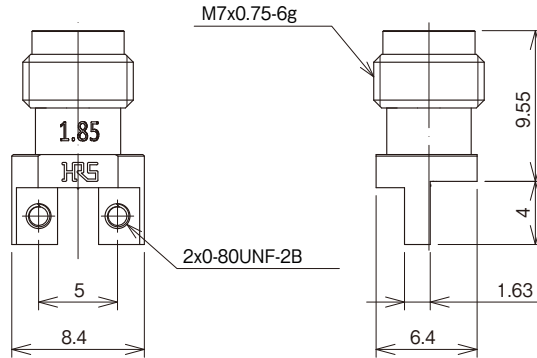
Inner Substrate



\*Coplaner line length between both connector ends : 25mm

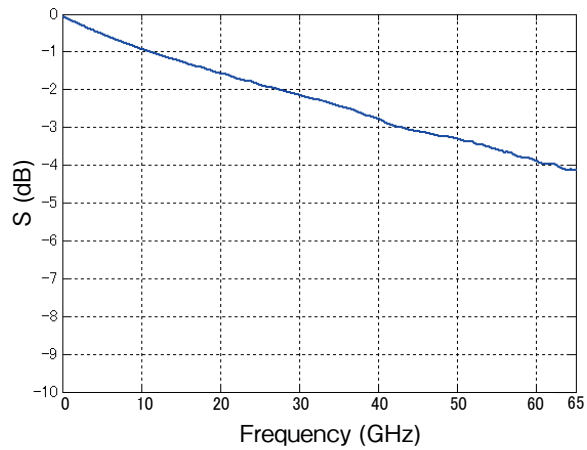
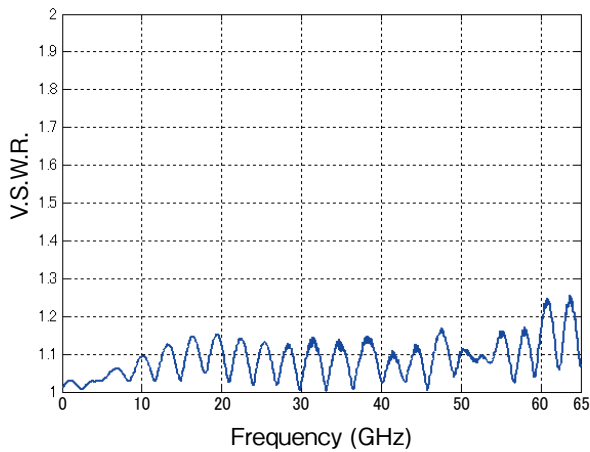
## PCB End Launch Receptacle (for High Speed Transmission Evaluation Board)

This product is a solderless mounted connector for prototype evaluation of high speed transmission boards. It is not recommended for use in actual commercial equipment.



Part No.	HRS No.	Attached Screw	Purchase Unit
HV-LR-SR2	CL0338-0018-0-00	-	20pcs per bag
HV-LR-SR2(11)	CL0338-0018-0-11	0-80UNF 1/4 inch	
HV-LR-SR2(12)	CL0338-0018-0-12	0-80UNF 3/16 inch	

### ◆ Frequency Characteristics (TYPICAL)

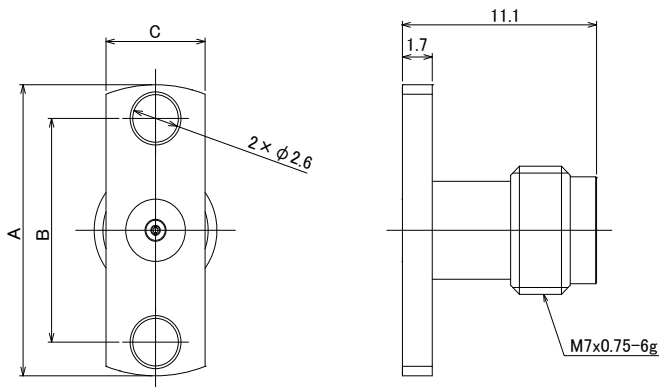


\*Coplaner line length between both connector ends : 25mm



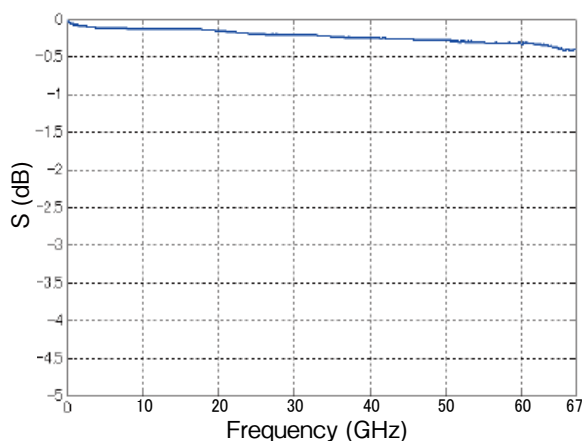
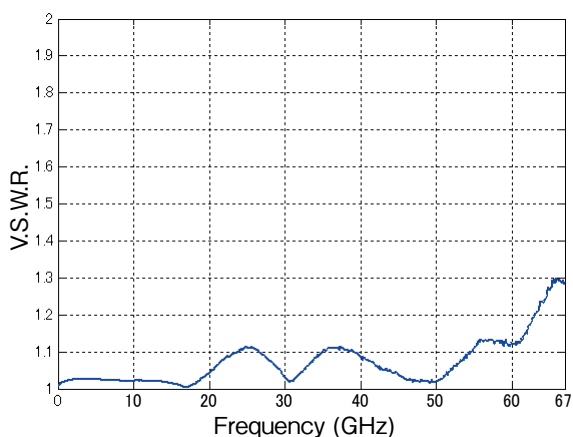
## Field Replaceable Receptacle (for a 0.23/9mil pin)

### ● Panel Jack (2 Screws Type)



Part No.	HRS No.	A	B	C	Purchase Unit
HV-R-FR2(10.16)	CL338-0032-0-00	14	10.16	4.85	20pcs per bag
HV-R-FR2(12.22)	CL338-0016-0-00	15.9	12.22	5.65	

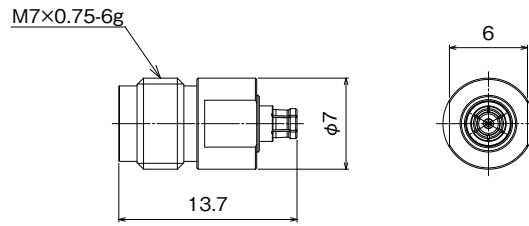
### ◆ Frequency Characteristics (TYPICAL)



\*Coplaner line length between both connector ends : 25mm

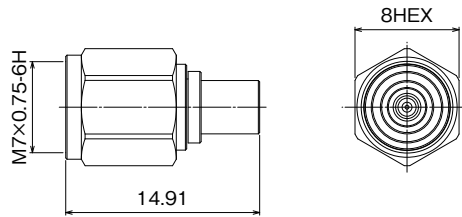
## Conversion Adapter

### HV Conversion Adapter (Mated Portion : SMPM Side : Jack, HV Side : Jack)



Part No.	HRS No.	Purchase Unit
SMPMJ-HVJ	CL0311-0421-7-00	20pcs per bag

### HV Conversion Adapter (Mated Portion : SMPM Side : Plug, HV Side : Plug)



Part No.	HRS No.	Purchase Unit
SMPMP(FD)-HVP	CL0311-0419-5-00	20pcs per bag
SMPMP(SB)-HVP	CL0311-0420-4-00	

## Precautions

1. The diameter of the center contact pin is only 0.511mm.  
Please handle with care. When mating the component with the corresponding connector, rotate the hex part only.
2. If any dust is found on the shell interface when mating the components, please wipe with alcohol.

## While Taking into Consideration

Specifications mentioned in this catalog are reference values.

When considering to order or use this product, please review the Drawing and Product Specifications sheets.

Use an appropriate cable when using the connector in combination with cables.

If considering usage of a non-specified cable, please contact your sales representative.

If assembly process is done by jigs & tools which are not identified by Hirose, the warranty of the product may be affected.

If considering usage for below mentioned applications, please contact your sales representative.

In cases where the application will demand a high level of reliability, such as automotive, medical instruments, public infrastructure, aerospace/defense etc. Hirose must review before assurance of reliability can be given.