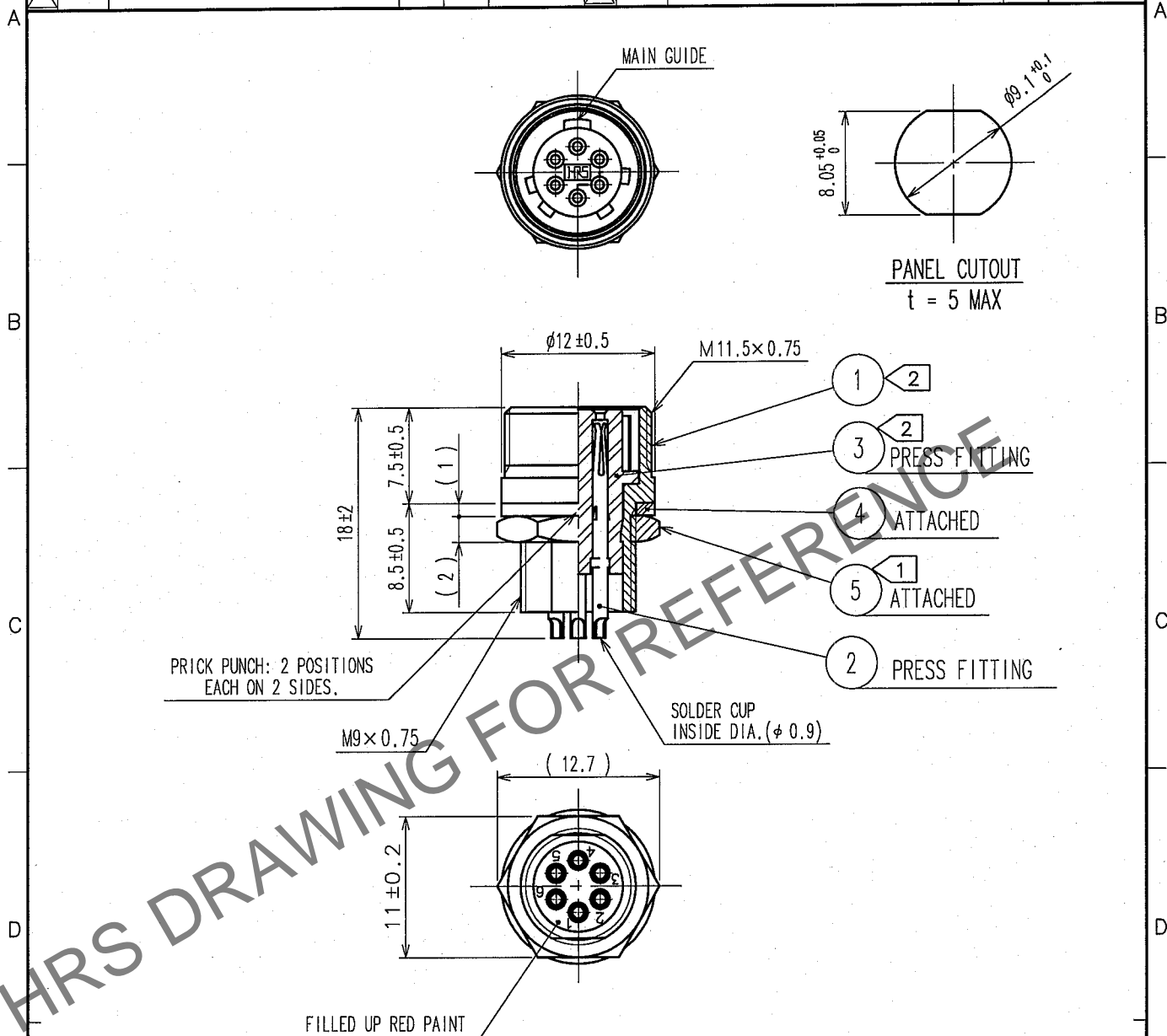
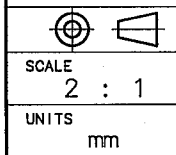


1					2					3					4				
COUNT	DESCRIPTION OF REVISIONS				BY	CHKD	DATE			COUNT	DESCRIPTION OF REVISIONS				BY	CHKD	DATE		
△										△									
△										△									
△										△									



- NOTE ① THE RECOMMENDED CLAMP TORQUE OF COMPONENT ⑤ : 1.5 TO 2 N · m
LOCTITE 242, LOCTITE OR EQUIVALENT IS RECOMMENDED TO
PREVENT COMPONENT ⑤ FROM LOOSENING.
- ② TORQUE FOR THE FIXTURE OF COMPONENT ① AND ③ IS TO BE 0.7 N · m MIN.

3	POLYACETAL	(WHITE)			
2	COPPER ALLOY	SURFACE PLATING : GOLD PLATING 0.2μ m min. UNDER PLATING : NICKEL PLATING 3μ m min.	5	STEEL	NICKEL PLATING
1	BRASS	CHROM PLATING	4	POLYAMIDE	(WHITE)
NO.	MATERIAL	FINISH, REMARKS	NO.	MATERIAL	FINISH, REMARKS
CODE NO. (OLD) CL			DRAWN E. Yumino 05.09.20	DESIGNED E. Yumino 05.09.20	CHECKED H. Zemba 05.09.20
			APPROVED M. Sato 05.09.20		
			RELEASED		
DRAWING NO. EDC4-005456-71			PART NO. SR30-10R-6S(71)		
CODE NO. CL103-0239-2-71			1 1		



HRS

HIROSE ELECTRIC CO., LTD.

CL103-0239-2-71