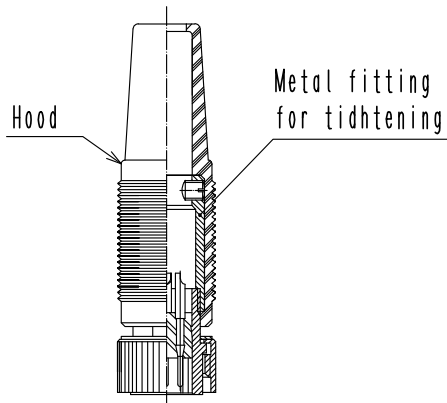
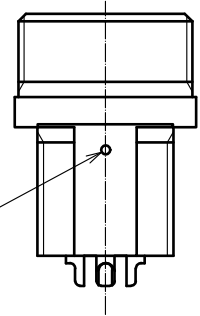


Appearance of Mating plug connector
(As an example)(1:1)

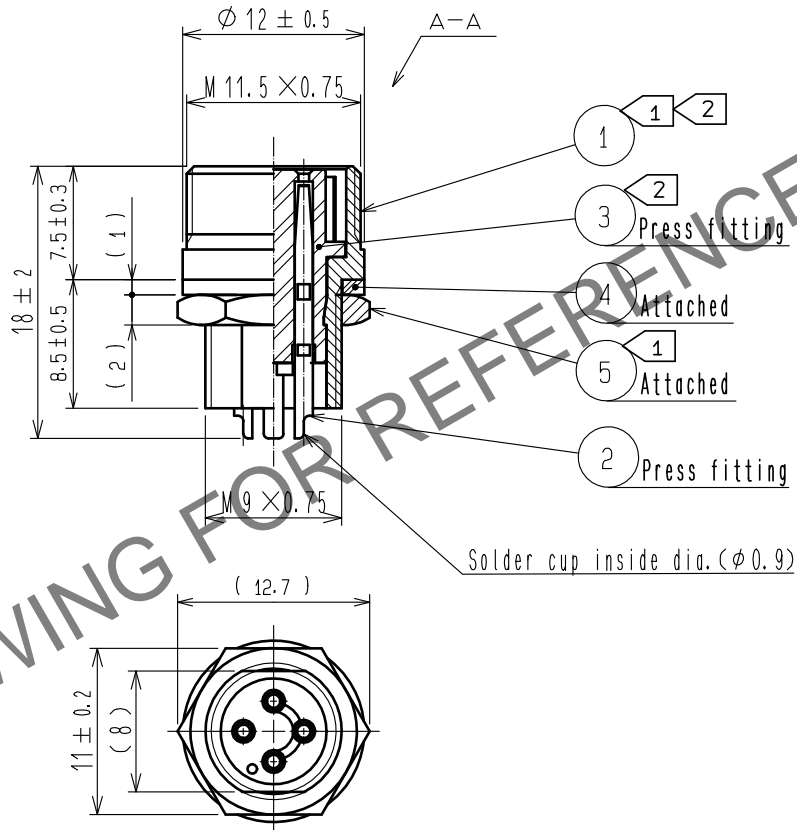
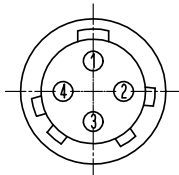


External view of
only Ref.No. ①, ② and ③.

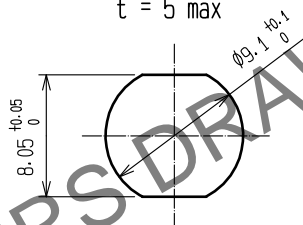


Prick punch:
2 positions
each on 2 sides.

The contact arrangements
from the mating face



Panel cutout
t = 5 max



- Notes ① The recommended clamp torque of component ref. No. ⑤: 1.5 to 2 N·m.
Apply Loctite 243, HENKEL JAPAN or equivalent to the threaded portion of
ref. No. ① in order to prevent loosening.
- ② Rotation torque resistance of ref. No. ① and ③ is to be 0.7 N·m
Do not rotate Hood and Metal fitting for tightening with the plug mated condition.

3	Polyacetal	(White)			
2	Copper alloy	Surface: Gold plating 0.2μm min. Under : Nickel plating 3μm min	5	Steel	Nickel plating
1	Brass	Chrome plating	4	Polyamide	(White)
NO.	MATERIAL	FINISH . REMARKS	NO.	MATERIAL	FINISH . REMARKS
UNITS mm		SCALE 2 : 1	COUNT	DESCRIPTION OF REVISIONS	DESIGNED
					CHECKED
					DATE
APPROVED : TP. KOMATSU 20221207			DRAWING NO.	EDC-006143-32-00	
CHECKED : HY. KOBAYASHI 20221207			PART NO.	SR30-10R-4S(32)	
DESIGNED : HY. KISHI 20221206			CODE NO.	CL0103-0264-0-32	
DRAWN : KR. SUZUKI 20221130					