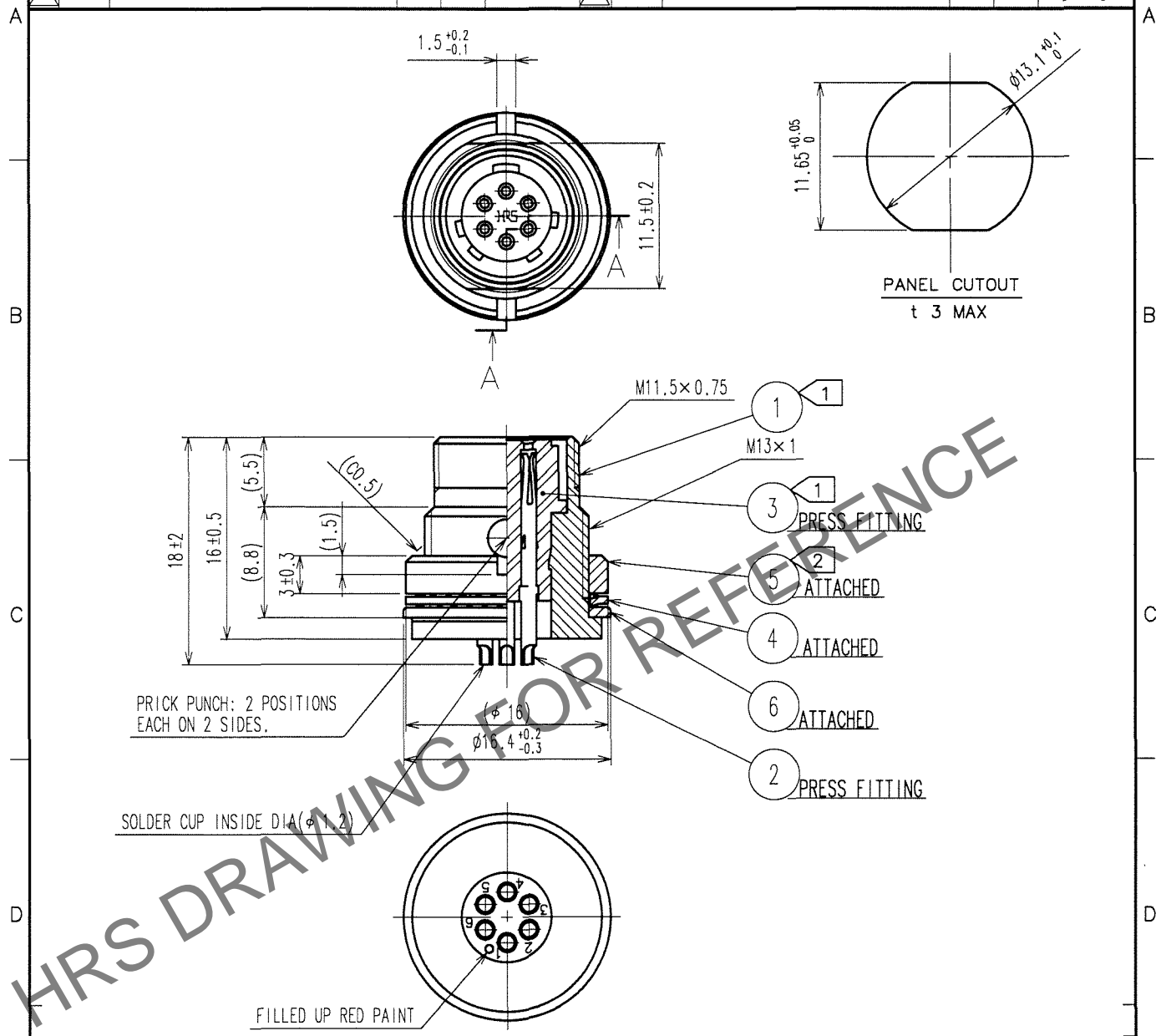


1					2					3					4				
COUNT	DESCRIPTION OF REVISIONS				BY	CHKD	DATE			COUNT	DESCRIPTION OF REVISIONS				BY	CHKD	DATE		
△										△									
△										△									
△										△									



注 1 TORQUE FOR THE FIXTURE OF COMPONENT ① AND ③ IS TO BE 0.7 N · m MIN.
2 THE RECOMMENDED CLAMP TORQUE OF COMPONENT ⑤ : 2 N · m.
3 LOCTITE242, HENKEL JAPAN OR EQUIVALENT IS RECOMMENDED TO PREVENT COMPONENT ⑤ FROM LOOSENING.

3	POLYACETAL	(WHITE)	6	BRASS	NICKEL PLATING (t0.8)
2	PHOSPHOR BRONZE	SURFACE PLATING : GOLD PLATING 0.2μm min. UNDER PLATING : NICKEL PLATING 3μm min.	5	BRASS	NICKEL PLATING
1	BRASS	NICKEL PLATING	4	PHOSPHOR BRONZE	NICKEL PLATING (t0.6)
NO.	MATERIAL	FINISH, REMARKS	NO.	MATERIAL	FINISH, REMARKS

CODE NO. (OLD) CL		DRAWN J. Horii 06.4.13	DESIGNED H. Nagano 06.04.14	CHECKED E. Kunita 06.04.29	APPROVED M. Sato 06.4.27	RELEASED
----------------------	--	------------------------------	-----------------------------------	----------------------------------	--------------------------------	----------

DRAWING NO. EDC4-008329-71		PART NO. SR30-10RD-6S(71)	
CODE NO. CL103-0302-7-71		1 1	