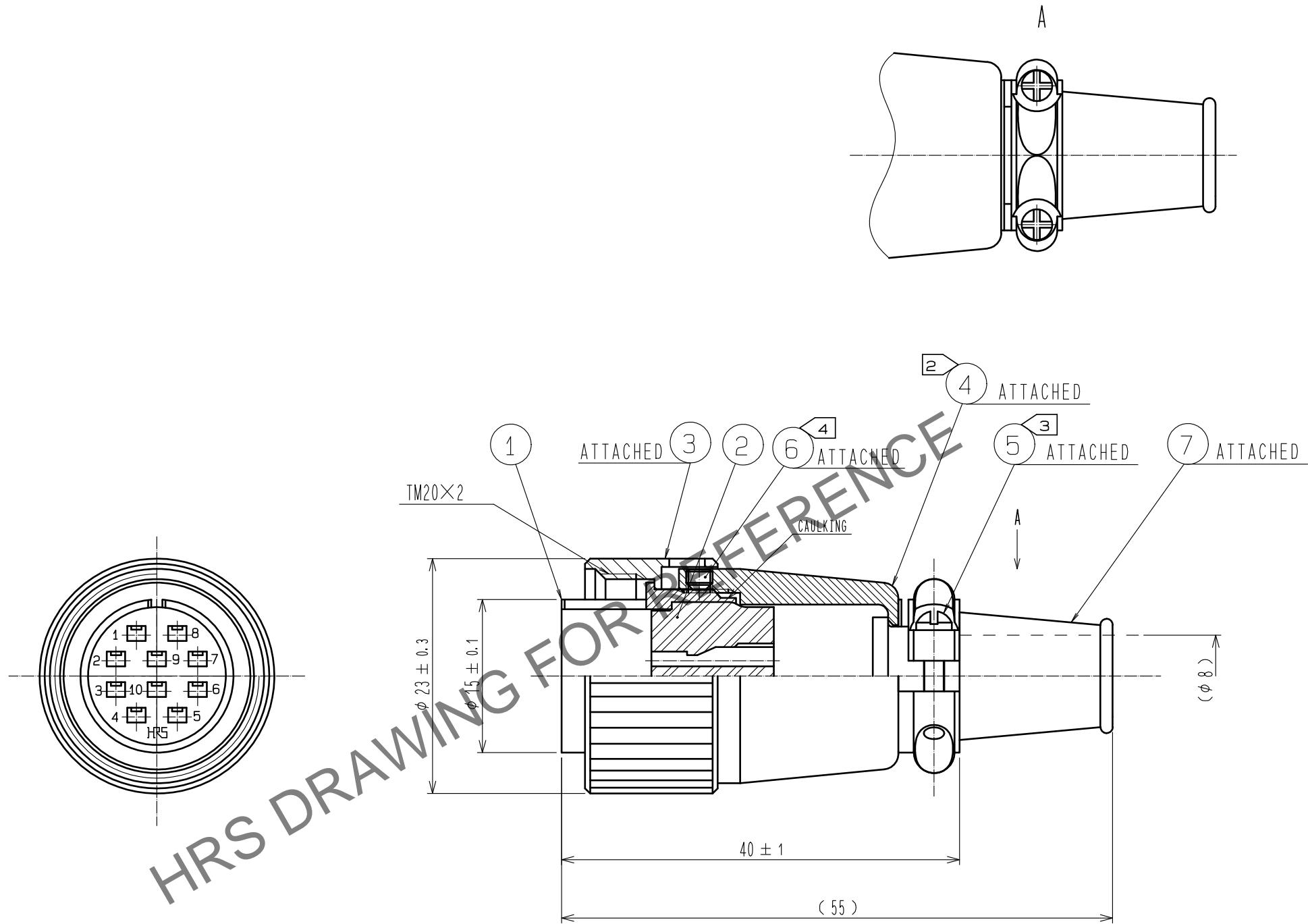


May.1.2024 Copyright 2024 HIROSE ELECTRIC CO., LTD. All Rights Reserved.
In case of consideration for using Automotive equipment / device which demand high reliability, kindly contact our sales window correspondents.



- NOTES
- 1 APPLICABLE CRIMP CONTACT:
AWG#24 ~ 20
RM-PC-212(CL109-0670-9) OR RM-PC-112(CL109-0668-7)
AWG#28 ~ 24
RM-PC-222(CL109-0674-0) OR RM-PC-122(CL109-0672-4)
 - 2 THE RECOMMENDED CLAMP TORQUE REF. NO. ④ : 2 TO 3 N · m.
 - 3 THE RECOMMENDED CLAMP TORQUE REF. NO. ⑤ : 0.12 TO 0.15 N · m.
 - 4 THE RECOMMENDED CLAMP TORQUE REF. NO. ⑥ : 0.3 TO 0.4 N · m.
LOCTITE 271, HENKEL JAPAN OR EQUIVALENT IS RECOMMENDED TO PREVENT
REF. NO. ⑥ FROM LOOSENING.
 - 5 ONE EXAMPLE OF THE ROTATION OF REF. NO. ④ TO REF. NO. ① IS SHOWN.

4	ALUMINUM ALLOY	MATTE FINISH ANODIC OXIDE COATING			
3	BRASS	MATTE FINISH CHROME PLATING	7	CHLOROPRENE RUBBER	(BLACK)
2	POLYCARBONATE	(BLACK) UL94V-0	6	STEEL	NICKEL PLATING JISB1177 HEXAGON SOCKET SET SCREW M2, 0×0.45×2
1	ZINC ALLOY	MATTE FINISH CHROME PLATING	5	BRASS	NICKEL PLATING JISB1111 PAN HEAD MACHINE SCREW M2×0.4×8
NO.	MATERIAL	FINISH . REMARKS	NO.	MATERIAL	FINISH . REMARKS
UNITS mm		SCALE 2 : 1	COUNT 	DESCRIPTION OF REVISIONS	DESIGNED CHECKED DATE
HIROSE ELECTRIC CO., LTD.		APPROVED : HY. KOBAYASHI	18. 02. 22	DRAWING NO.	EDC-007928-31-00
		CHECKED : HY. KOBAYASHI	18. 02. 22	PART NO.	RM15TPN-10PC(31)
		DESIGNED : HY. KISHI	18. 02. 21	CODE NO.	CL109-0712-7-31
		DRAWN : MK. INOUE	18. 02. 06		