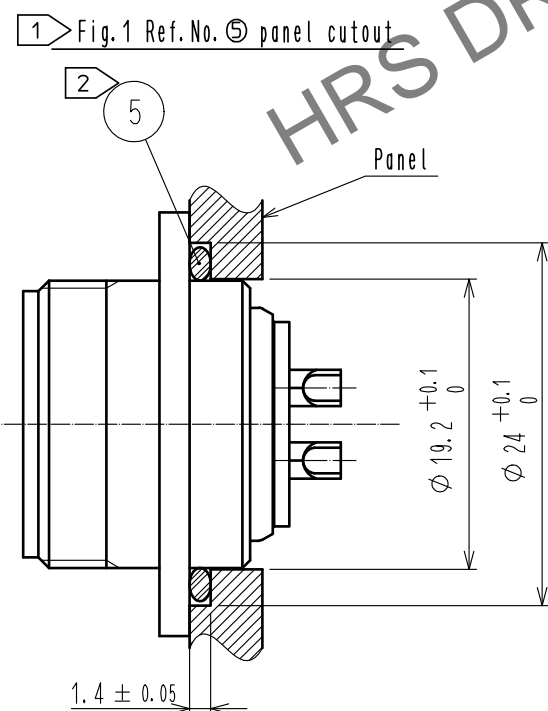
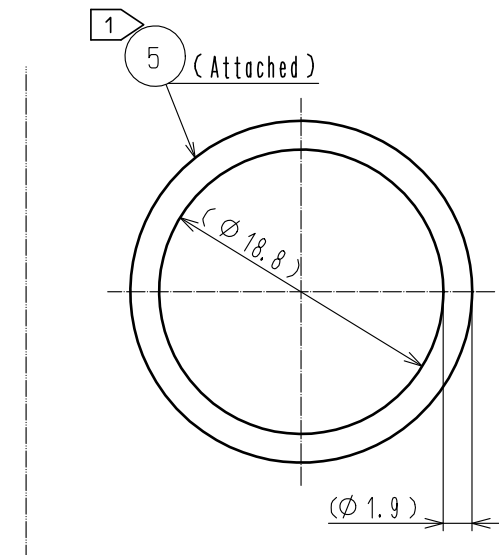
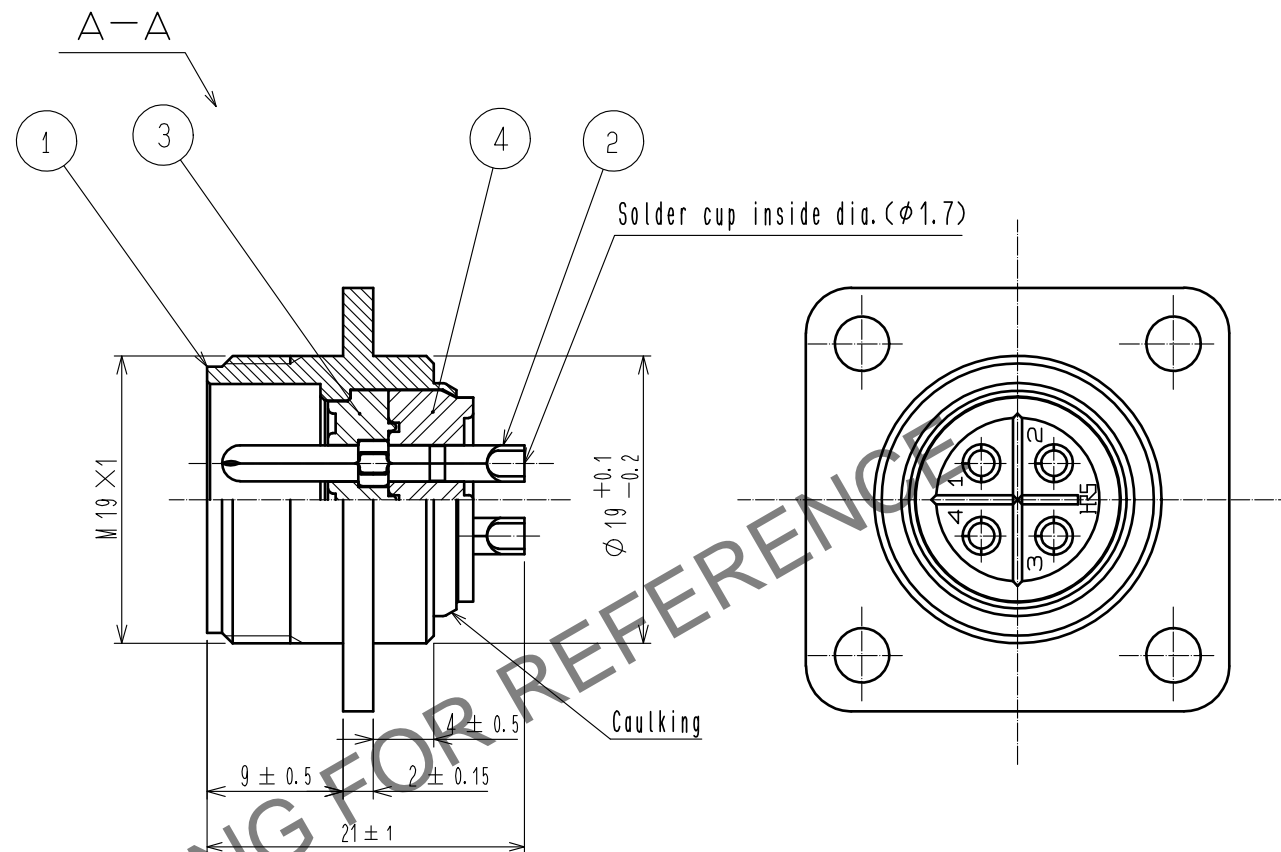
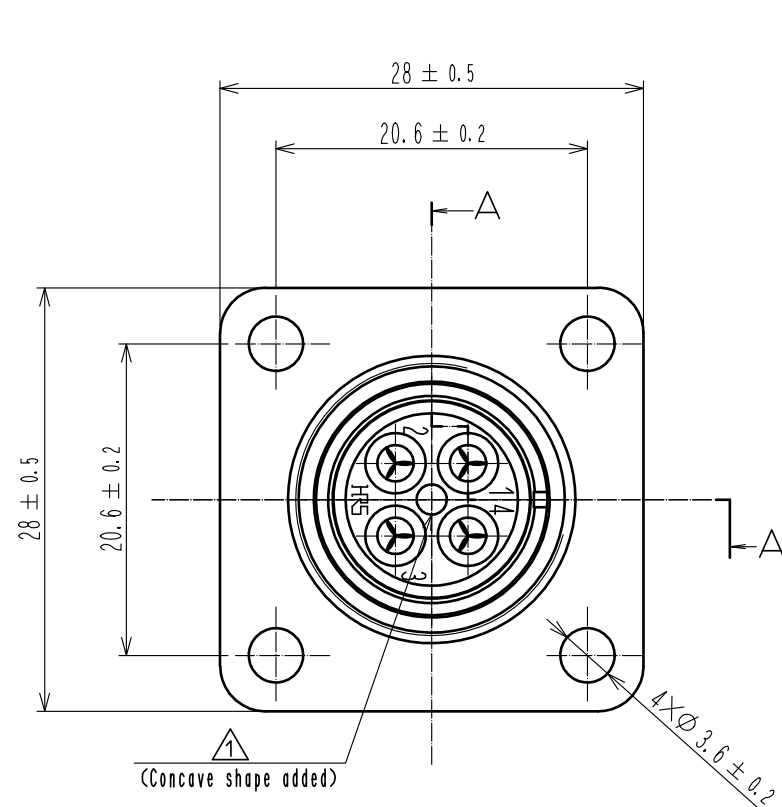


Mar.1.2024 Copyright 2024 HIROSE ELECTRIC CO., LTD. All Rights Reserved.  
In case of consideration for using Automotive equipment / device which demand high reliability, kindly contact our sales window correspondents.



- Notes
- 1 When waterproofing with panel, use Ref. No. 5 (O-ring).  
The dimension of attaching Ref. No. 5 to a panel is shown in Fig. 1.
  - 2 When mounted on chassis, be careful that Ref. No. 5 is fitted into the indicated groove without any biting.
  - 3 Surface: Gold plating  $0.2 \mu\text{m}$  min.  
Under : Nickel plating  $3 \mu\text{m}$  min.

3	Polyphenylene sulfide	(Black)					
2	Brass	3	5	Silicone rubber	(Black)		
1	Zinc alloy	Chrome plating	4	Polyphenylene sulfide	(Black)		
NO.	MATERIAL	FINISH . REMARKS	NO.	MATERIAL	FINISH . REMARKS		
UNITS		SCALE	COUNT	DESCRIPTION OF REVISIONS		DESIGNED	CHECKED
mm		2 : 1	1	DIS-C-00016536		TY. SUZUKI	HY. KOBAYASHI
HIROSE ELECTRIC CO., LTD.		APPROVED : TP. KOMATSU	20230613	DRAWING NO.		EDC-111095-82-00	
		CHECKED : HY. KOBAYASHI	20230613	PART NO.		RM15WTRZB-4P(82)	
		DESIGNED : HT. ZENBA	20230613	CODE NO.		CL0109-1673-2-82	
		DRAWN : KR. SUZUKI	20230613				