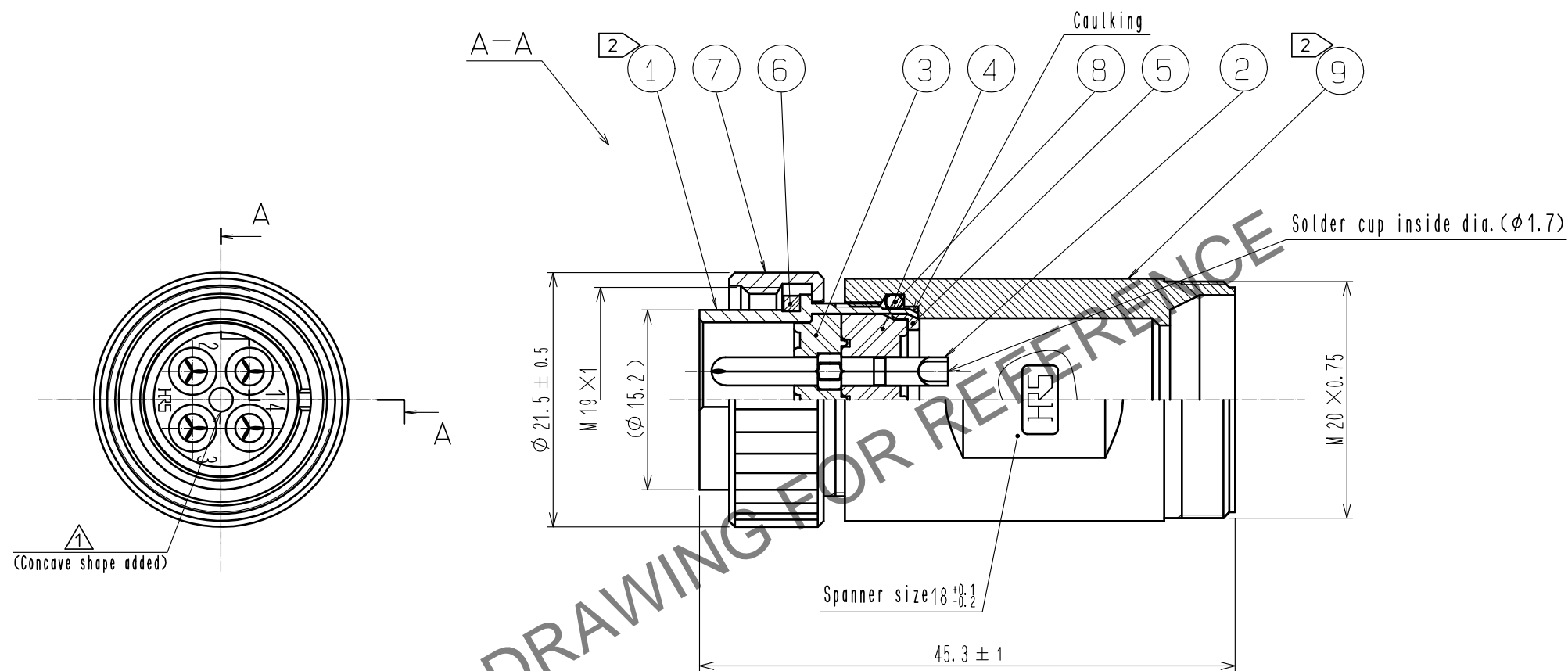


Mar.1.2024 Copyright 2024 HIROSE ELECTRIC CO., LTD. All Rights Reserved.
In case of consideration for using Automotive equipment / device which demand high reliability, kindly contact our sales window correspondents.



- Notes 1 Rotation example of Ref. No. ① and ⑨ are shown.
② The tightening torque of Ref. No. ⑨: 2 to 3 N·m.
Apply Loctite 243 HENKEL JAPAN or equivalent to the threaded portion of Ref. No. ① in order to prevent loosening.
3 This product to be used with cable clamp, JR16WCC-※(72).
※ designate diameter of applicable cable.
4 The cable pull and twisting strength, waterproof tightness and other characteristics may differ, depending on the cable structure, please confirm before the use.
⑤ Surface: Gold plating 0.2 μm min.
Under : Nickel plating 3 μm min.

5	Polyacetal	(White)			
4	Polyphenylene sulfide	(Black)	9	Zinc alloy	Chrome plating
3	Polyphenylene sulfide	(Black)	8	Silicone rubber	(Black)
2	Brass	⑤	7	Brass	Chrome plating
1	Zinc alloy	Chrome plating	6	Silicone rubber	(Red)
NO.	MATERIAL	FINISH . REMARKS	NO.	MATERIAL	FINISH . REMARKS
UNITS mm		SCALE 2 : 1	COUNT 1	DESCRIPTION OF REVISIONS DIS-C-00016536	DESIGNED TY. SUZUKI
HIROSE ELECTRIC CO., LTD.		APPROVED : TP. KOMATSU	20230613	DRAWING NO. EDC-111157-82-00	
		CHECKED : HY. KOBAYASHI	20230613	PART NO. RM15WTPZA-4P(82)	
		DESIGNED : HT. ZENBA	20230613	CODE NO. CL0109-1735-8-82	
		DRAWN : KR. SUZUKI	20230613		
				1	1