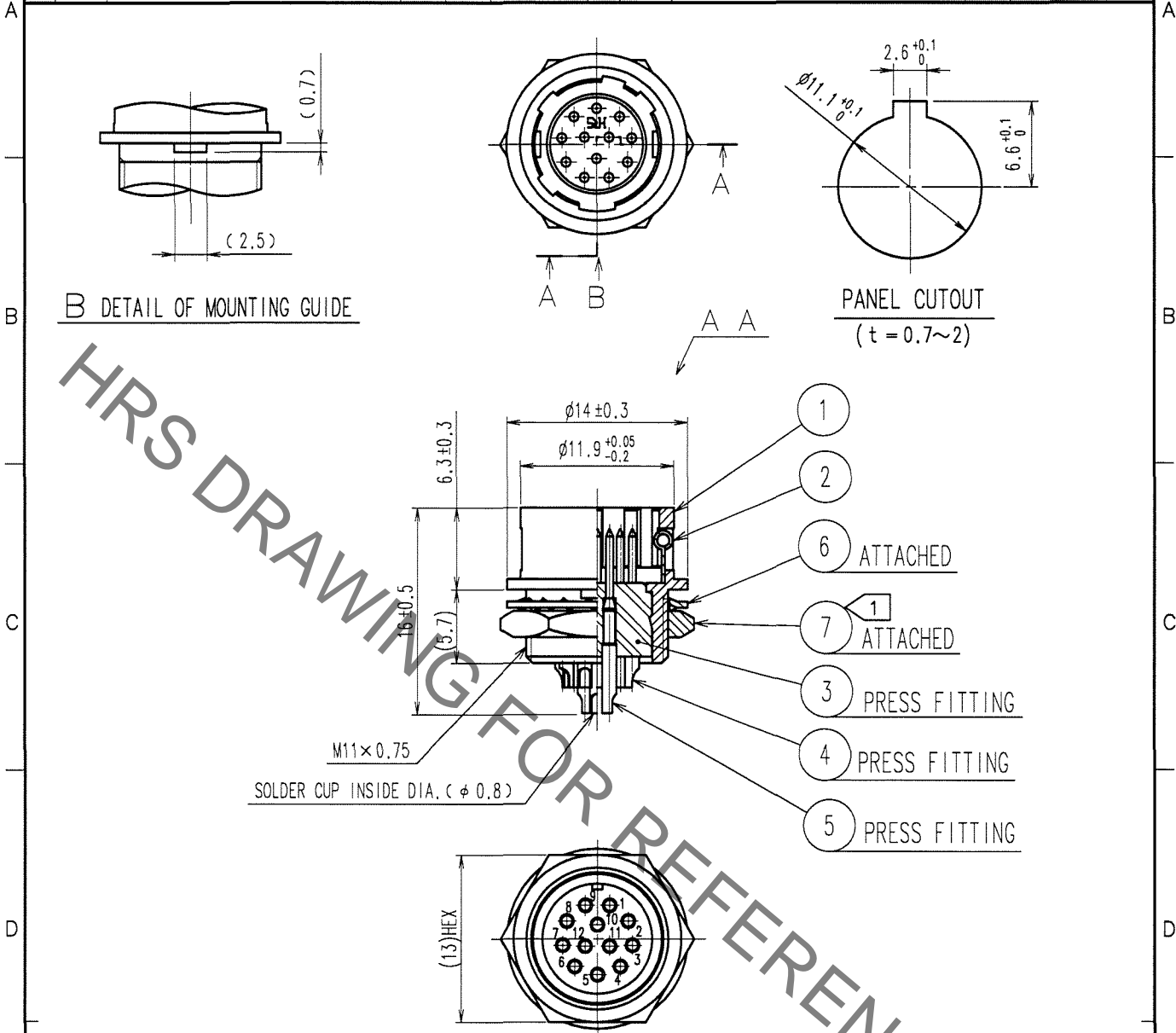


May.1.2021 Copyright 2021 HIROSE ELECTRIC CO., LTD. All Rights Reserved.
 In case of consideration for using Automotive equipment / device which demand high reliability, kindly contact our sales window correspondents.

COUNT	DESCRIPTION OF REVISIONS	BY	CHKD	DATE	COUNT	DESCRIPTION OF REVISIONS	BY	CHKD	DATE
△					△				
△					△				
△					△				



NOTE ① THE RECOMMENDED CLAMP TORQUE OF REF. NO. ⑦ TO BE 2 N·m.
 LOCTITE 242, HENKEL JAPAN OR EQUIVALENT IS RECOMMENDED TO
 PREVENT REF. NO. ⑦ FROM LOOSENING.

NO.	MATERIAL	FINISH, REMARKS	NO.	MATERIAL	FINISH, REMARKS
3	POLYAMIDE	(BLUE)	7	BRASS	NICKEL PLATING
2	STAINLESS STEEL		6	PHOSPHOR BRONZE	NICKEL PLATING
1	ZINC ALLOY	MATTE FINISH NICKEL PLATED	5	BRASS	GOLD PLATING 0.2μm min. NICKEL UNDER PLATING 2μm min.
4	BRASS				

CODE NO. (OLD) CL	DRAWN D. Matsume 05.11.19	DESIGNED D. Matsume 05.11.19	CHECKED E. Kunii 05.11.22	APPROVED M. Sato 05.11.24	RELEASED
----------------------	---------------------------------	------------------------------------	---------------------------------	---------------------------------	----------

TO
R

 SCALE 2 : 1 UNITS mm	DRAWING NO. EDC4-007771-73 HIROSE ELECTRIC CO., LTD.	PART NO. HR10-10R-12P(73) CODE NO. CL110-0036-3-73	1 1
-----------------------------------	--	---	--------