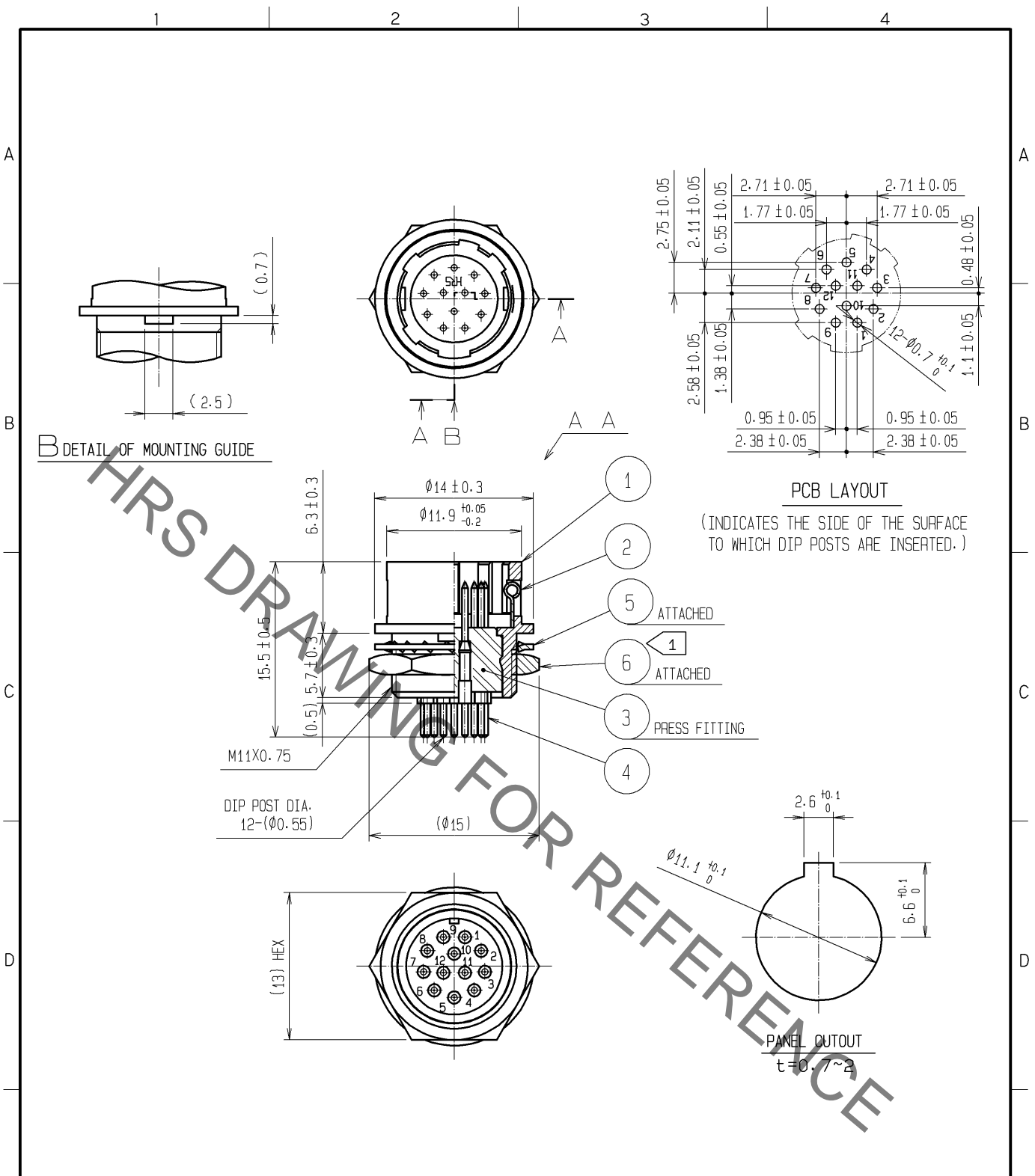


May.1.2021 Copyright 2021 HIROSE ELECTRIC CO., LTD. All Rights Reserved.  
 In case of consideration for using Automotive equipment / device which demand high reliability, kindly contact our sales window correspondents.



NOTE 1 THE RECOMMENDED CLAMP TORQUE OF REF. NO. ⑥ TO BE 2 N·m.  
 LOCTITE 242, HENKEL JAPAN OR EQUIVALENT IS RECOMMENDED TO PREVENT REF. NO. ⑥ FROM LOOSENING.

NO.	MATERIAL	FINISH	REMARKS	NO.	MATERIAL	FINISH	REMARKS
3	POLYAMIDE	(BLACK)	UL94V-0	6	BRASS	NICKEL PLATING	
2	STAINLESS STEEL			5	PHOSPHOR BRONZE	NICKEL PLATING	
1	ZINC ALLOY	MATTE FINISH	NICKEL PLATED	4	BRASS	GOLD PLATING 0.2μm min. NICKEL UNDER PLATING 2μm min.	

UNITS	SCALE	COUNT	DESCRIPTION OF REVISIONS	DESIGNED	CHECKED	DATE
mm	2 : 1	1	DIS-C-001539	WR. AJIRO	HY. KISHI	09.12.22

<b>HRS</b> HIROSE ELECTRIC CO., LTD.	APPROVED : MO. SATOH	05.10.20	DRAWING NO.	EDC4-009659-73
	CHECKED : EJ. KUNII	05.10.20	PART NO.	HR10-10R-12PA(73)
	DESIGNED : DS. MATSUNE	05.10.19	CODE NO.	CL110-0055-8-73
	DRAWN : DS. MATSUNE	05.10.19		