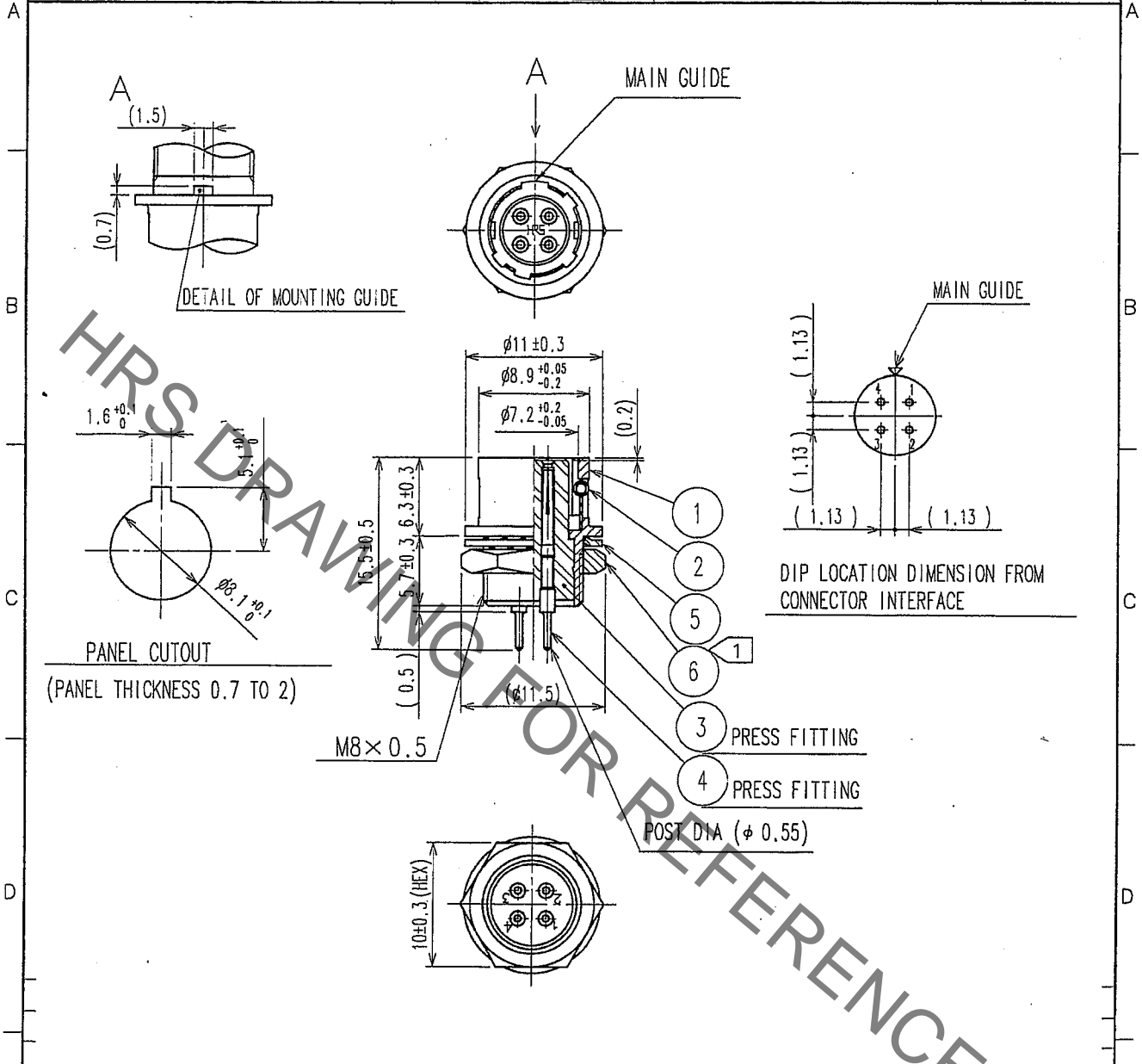


May.1.2021 Copyright 2021 HIROSE ELECTRIC CO., LTD. All Rights Reserved.
In case of consideration for using Automotive equipment / device which demand high reliability, kindly contact our sales window correspondents.

1		2			3			4		
COUNT	DESCRIPTION OF REVISIONS	BY	CHKD	DATE	COUNT	DESCRIPTION OF REVISIONS	BY	CHKD	DATE	
△					△					
△					△					
△					△					



NOTE: ① THE RECOMMENDED TIGHTEN TORQUE OF REF.NO.⑥: 1.5N·m.
ADHESIVE LOCTITE 242, HENKEL JAPAN OR EQUIVALENT IS RECOMMENDED TO PREVENT REF.NO.⑥ FROM LOOSENING.

3	POLYAMIDE	(BLACK) UL94V-1	6	BRASS	NICKEL PLATED
2	STAINLESS STEEL		5	PHOSPHOR BRONZE	NICKEL PLATED
1	ZINC ALLOY	MATTE FINISH NICKEL PLATED	4	BERYLLIUM COPPER	OVERPLATING : GOLD 0.2μm min UNDERPLATING : NICKEL 2.0μm min
NO.	MATERIAL	FINISH, REMARKS	NO.	MATERIAL	FINISH, REMARKS

CODE NO. (OLD)	DRAWN	DESIGNED	CHECKED	APPROVED	RELEASED
	TSUZUKI 06.07.22	Y. Yamada 06.07.22	P. Egawa 06.07.22	M. Sato 06.07.22	

TO
R

	DRAWING NO. EDC4-022725-73	PART NO. HR10-7R-4SA(73)
SCALE 2 : 1	HIROSE ELECTRIC CO., LTD.	CODE NO. CL110-0059-9-73
UNITS mm		1/1