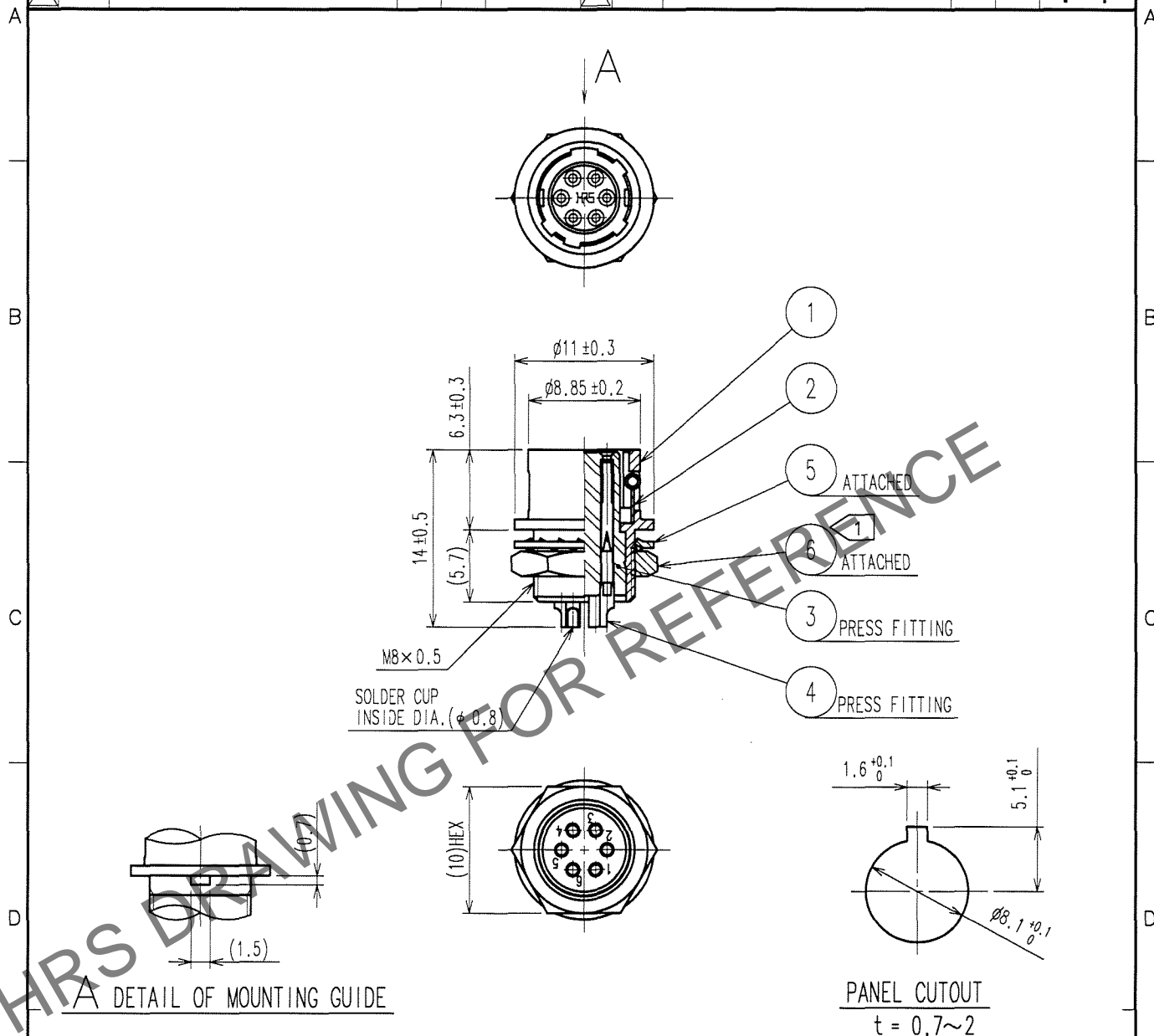


1					2			3			4		
	COUNT	DESCRIPTION OF REVISIONS	BY	CHKD	DATE		COUNT	DESCRIPTION OF REVISIONS	BY	CHKD	DATE		
△					. .	△					. .		
△						△					. .		
△						△					. .		



NOTE 1 THE RECOMMENDED CLAMP TORQUE OF REF. NO. ⑥ TO BE 1.5 N · m.
LOCTITE 242, HENKEL JAPAN OR EQUIVALENT IS RECOMMENDED TO
PREVENT REF. NO. ⑥ FROM LOOSENING.
2 GOLD PLATING : 0.2 μ m min.
NICKEL UNDER PLATING : 2 μ m min.

3	POLYAMIDE	(BLACK) UL94V-0	6	BRASS	NICKEL PLATING
2	STAINLESS STEEL		5	PHOSPHOR BRONZE	NICKEL PLATING
1	ZINC ALLOY	BLACK CHROME PLATING	4	PHOSPHOR BRONZE	2
NO.	MATERIAL	FINISH, REMARKS	NO.	MATERIAL	FINISH, REMARKS

CODE NO. (OLD) CL	DRAWN T. Kamatsu 05.12.19	DESIGNED D. Matsume 05.12.19	CHECKED E. Kunii 05.12.19	APPROVED M. Sato 05.12.20	RELEASED
DRAWING NO. EDC4-020540-77	PART NO. HR10A-7R-6S(77)				
SCALE 2 : 1	CODE NO. CL110-0307-9-77				
UNITS mm	1 1				

HRS

HIROSE ELECTRIC CO., LTD.

CL110-0307-9-77