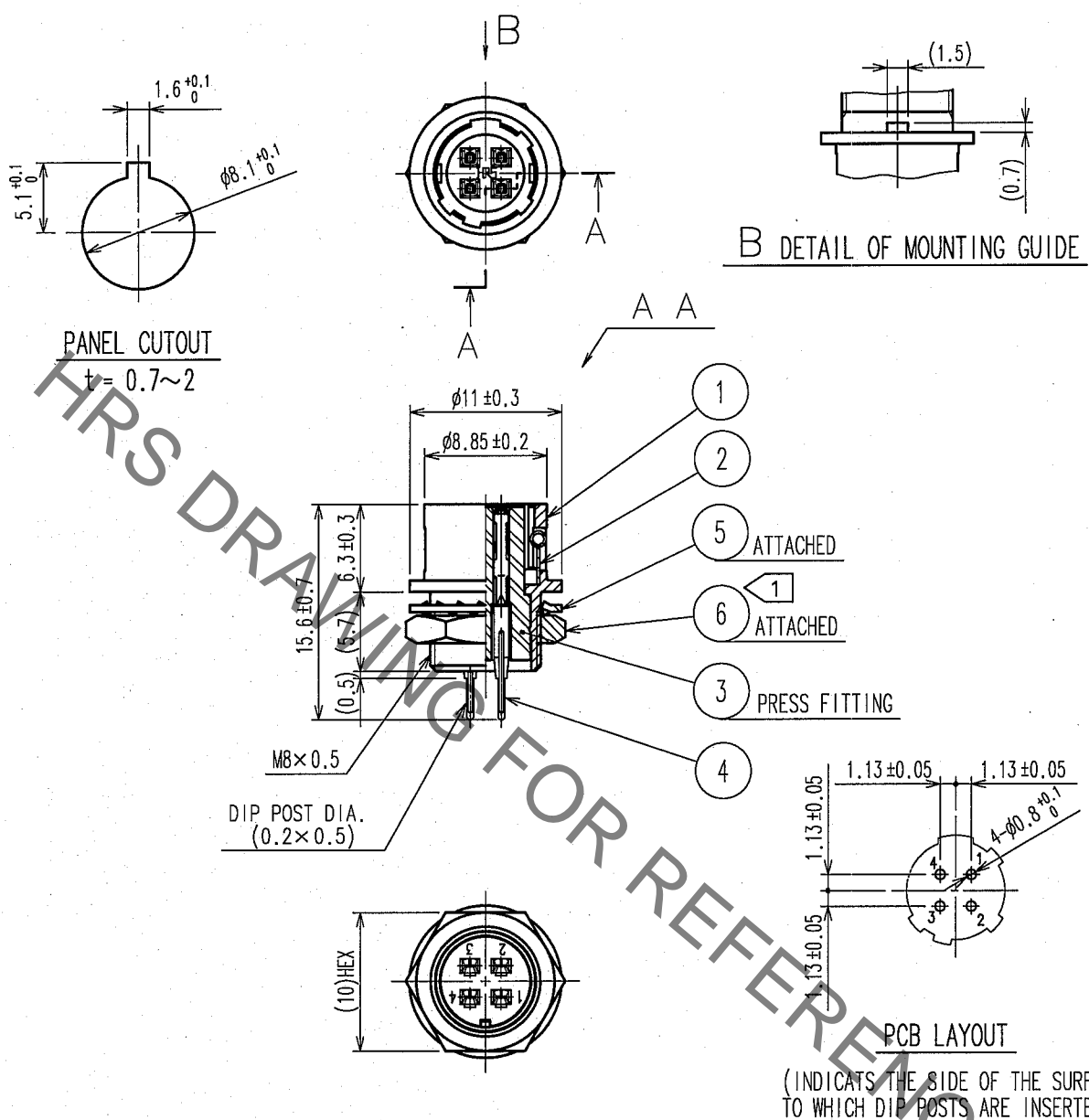


Sep.1.2021 Copyright 2021 HIROSE ELECTRIC CO., LTD. All Rights Reserved.  
In case of consideration for using Automotive equipment / device which demand high reliability, kindly contact our sales window correspondents.

1	2	3	4						
COUNT.	DESCRIPTION OF REVISIONS	BY	CHKD	DATE	COUNT.	DESCRIPTION OF REVISIONS	BY	CHKD	DATE
△				..	△				..
△					△				..
△					△				..



NOTE ① THE RECOMMENDED CLAMP TORQUE OF REF. NO. ⑥ TO BE 1.5 N·m.  
LOCTITE 242, HENKEL JAPAN OR EQUIVALENT IS RECOMMENDED TO  
PREVENT REF. NO. ⑥ FROM LOOSENING.

NO.	MATERIAL	FINISH, REMARKS	NO.	MATERIAL	FINISH, REMARKS
3	PBT	(BLACK) UL94V-0	6	BRASS	NICKEL PLATING
2	STAINLESS STEEL		5	PHOSPHOR BRONZE	NICKEL PLATING
1	ZINC ALLOY	MATTE FINISH NICKEL PLATED	4	PHOSPHOR BRONZE	SILVER PLATING 2μ m min.

CODE NO. (OLD) CL	DRAWN S. Komatsu	DESIGNED D. Matsume	CHECKED E. Kurui	APPROVED M. Sato	RELEASED
	65-11-17	65-11-18	05-11-22	05-11-25	

SCALE 2 : 1	DRAWING NO. EDC4-022527-73	PART NO. HR10A-7R-4SB(73)
UNITS mm	HRS HIROSE ELECTRIC CO., LTD.	CODE NO. CL110-0314-4-73

TO
R

