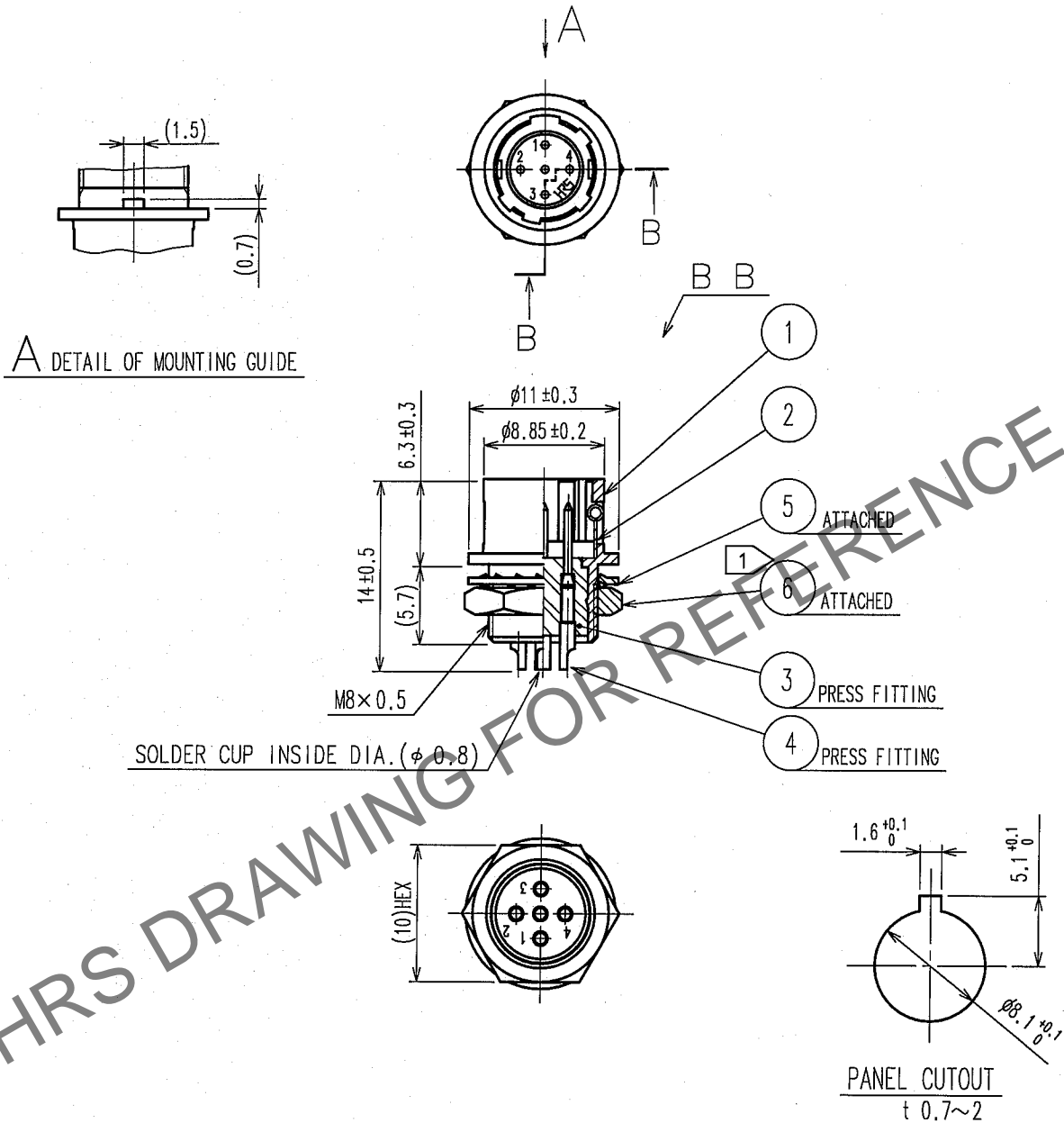


May.1.2024 Copyright 2024 HIROSE ELECTRIC CO., LTD. All Rights Reserved.  
In case of consideration for using Automotive equipment / device which demand high reliability, kindly contact our sales window correspondents.

1					2					3					4				
COUNT	DESCRIPTION OF REVISIONS				BY	CHKD	DATE			COUNT	DESCRIPTION OF REVISIONS				BY	CHKD	DATE		
△							. .			△							. .		
△										△							. .		
△										△							. .		



NOTE 1 THE RECOMMENDED CLAMP TORQUE OF REF.NO. ⑥ : 1.5N · m .  
LOCTITE 242, HENKEL JAPAN OR EQUIVALENT IS RECOMMENDED TO PREVENT  
REF. NO. ⑥ FROM LOOSENING.

3	POLYAMIDE	(BLACK) UL94V-0	6	BRASS	NICKEL PLATING
2	STAINLESS STEEL		5	PHOSPHOR BRONZE	NICKEL PLATING
1	ZINC ALLOY	MATTE FINISH NICKEL PLATED	4	BRASS	SILVER PLATING 2 μm min.
NO.	MATERIAL	FINISH, REMARKS	NO.	MATERIAL	FINISH, REMARKS
CODE NO. (OLD) CL?			DRAWN	DESIGNED	CHECKED
			APPROVED	RELEASED	
			<i>D. Matsune</i> 65.09.01	<i>D. Matsune</i> 65.09.01	<i>H. Kishi</i> 65.09.01
				<i>M. Sato</i> 05.09.01	
DRAWING NO. EDC4-029109-73			PART NO. HR10A-7R-5P(73)		
SCALE 2 : 1			CODE NO. CL110-0321-0-73		
UNITS mm					
<b>HRS</b>					
HIROSE ELECTRIC CO., LTD.					