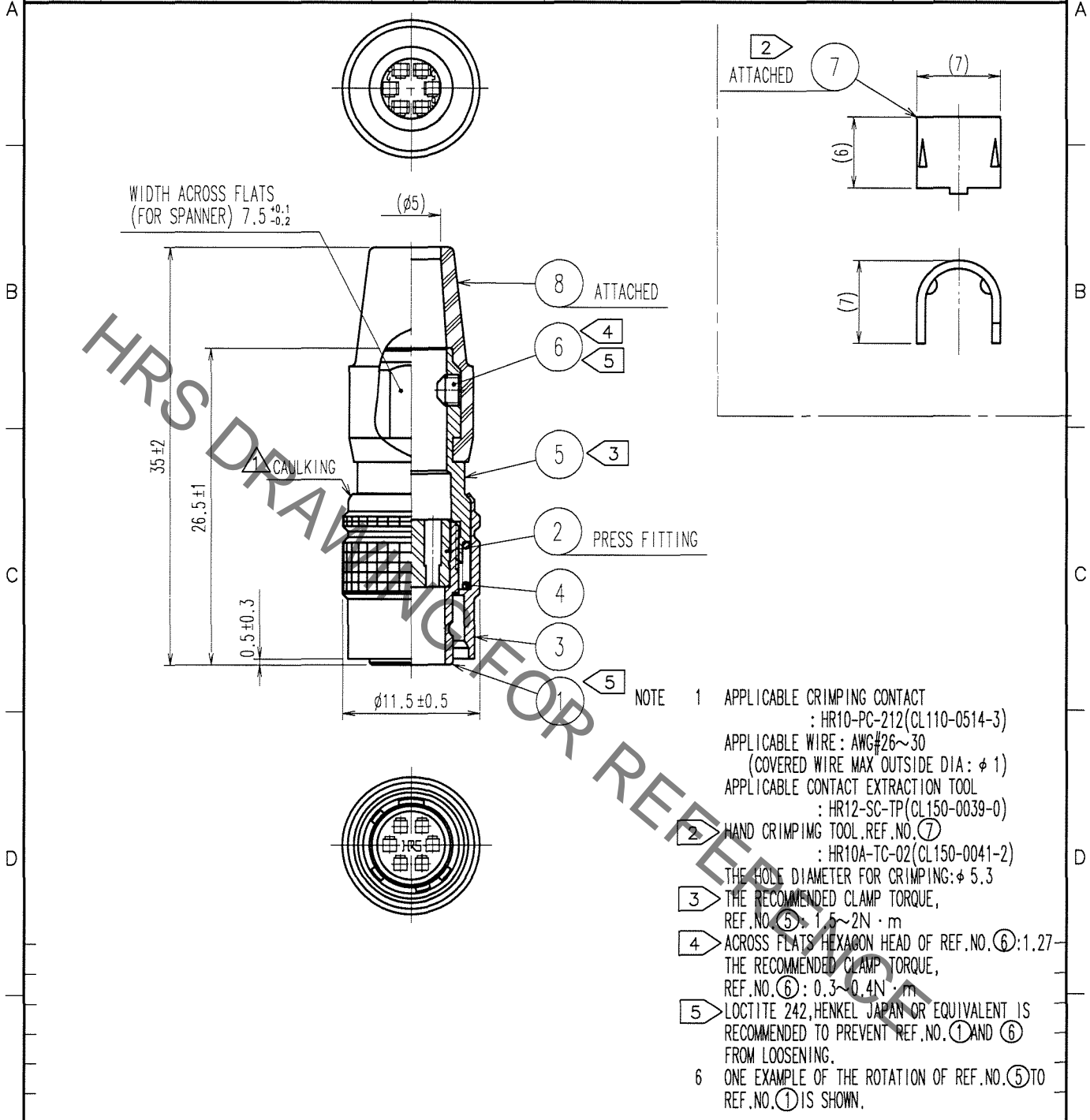


Sep.1.2021 Copyright 2021 HIROSE ELECTRIC CO., LTD. All Rights Reserved.
In case of consideration for using Automotive equipment / device which demand high reliability, kindly contact our sales window correspondents.

1		2			3			4		
COUNT	DESCRIPTION OF REVISIONS	BY	CHKD	DATE	COUNT	DESCRIPTION OF REVISIONS	BY	CHKD	DATE	
1	DIS-C-000409	D.M	M.S	06.12.19						



- NOTE 1 APPLICABLE CRIMPING CONTACT : HR10-PC-212(CL110-0514-3)
 APPLICABLE WIRE : AWG#26~30 (COVERED WIRE MAX OUTSIDE DIA : φ 1)
 APPLICABLE CONTACT EXTRACTION TOOL : HR12-SC-TP(CL150-0039-0)
 HAND CRIMPING TOOL, REF. NO. ⑦ : HR10A-TC-02(CL150-0041-2)
 THE HOLE DIAMETER FOR CRIMPING : φ 5.3
 ③ THE RECOMMENDED CLAMP TORQUE, REF. NO. ⑤ : 1.5 ~ 2N · m
 ④ ACROSS FLATS HEXAGON HEAD OF REF. NO. ⑥ : 1.27 THE RECOMMENDED CLAMP TORQUE, REF. NO. ⑥ : 0.3 ~ 0.4N · m
 ⑤ LOCTITE 242, HENKEL JAPAN OR EQUIVALENT IS RECOMMENDED TO PREVENT REF. NO. ① AND ⑥ FROM LOOSENING.
 6 ONE EXAMPLE OF THE ROTATION OF REF. NO. ⑤ TO REF. NO. ① IS SHOWN.

NO.	MATERIAL	FINISH, REMARKS	NO.	MATERIAL	FINISH, REMARKS
4	STEEL	NICKEL PLATING	8	CHLOROPRENE RUBBER	(BLACK)
3	BRASS	MATTE FINISH NICKEL PLATED	7	BRASS	
2	POLYBUTYLENE TEREPHTHALATE	(BLACK) UL94V-0	6	STEEL	NICKEL PLATING HEXAGON SOCKET SET SCREW M2, 6x0.45x2
1	ZINC ALLOY	MATTE FINISH NICKEL PLATED	5	BRASS	NICKEL PLATING

CODE NO. (OLD) CL	DRAWN M. SATO '06.05.26	DESIGNED D. MATSUNE '06.05.26	CHECKED E. KUNII '06.05.29	APPROVED M. SATO '06.05.30	RELEASED
----------------------	-------------------------------	-------------------------------------	----------------------------------	----------------------------------	----------

SCALE 2 : 1	DRAWING NO. EDC4-021662-73	PART NO. HR10A-7P-6PC(73)
	UNITS mm	CODE NO. CL110-0503-7-73

TO
R