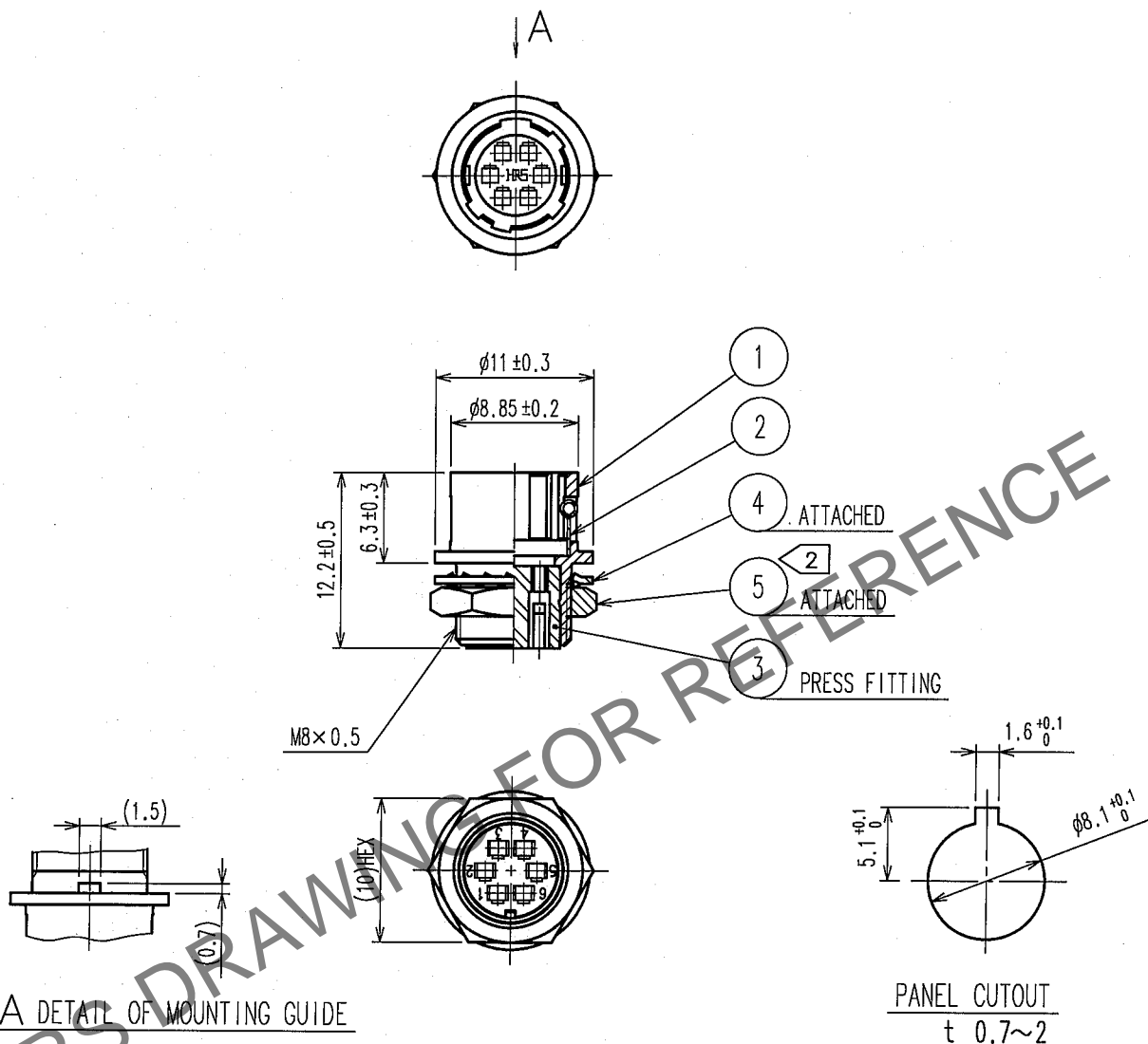


Apr.1.2024 Copyright 2024 HIROSE ELECTRIC CO., LTD. All Rights Reserved.  
In case of consideration for using Automotive equipment / device which demand high reliability, kindly contact our sales window correspondents.

1					2					3					4				
COUNT	DESCRIPTION OF REVISIONS				BY	CHKD	DATE			COUNT	DESCRIPTION OF REVISIONS				BY	CHKD	DATE		
△							. . .			△							. . .		
△										△							. . .		
△										△							. . .		



NOTE 1 APPLICABLE CONTACT : HR10-PC-212  
APPLICABLE WIRE : AWG#26~30 ( INSULATOR OUTER DIA. OF  $\phi$  1 OR LESS )  
APPLICABLE TOOL, EXTRACTOR : RP6-SC-TP  
② THE RECOMMENDED CLAMP TORQUE OF REF.NO. ⑤ : 1.5N · m .  
LOCTITE 242, HENKEL JAPAN OR EQUIVALENT IS RECOMMENDED TO PREVENT  
REF. NO. ⑤ FROM LOOSENING.

3	PBT	(BLACK) UL94V-0			
2	STAINLESS STEEL		5	BRASS	NICKEL PLATING
1	ZINC ALLOY	MATTE FINISH NICKEL PLATED	4	PHOSPHOR BRONZE	NICKEL PLATING
NO.	MATERIAL	FINISH, REMARKS	NO.	MATERIAL	FINISH, REMARKS
CODE NO. (OLD) CL			DRAWN	DESIGNED	CHECKED
			H.Kishi	H.Kishi	E.Kumai
			05.08.29	05.08.29	05.08.30
					M.Sato
					05.08.30
DRAWING NO. EDC4-025178-73			PART NO. HR10A-7R-6PC(73)		
SCALE 2 : 1			CODE NO. CL110-0507-8-73		
UNITS mm					
HRS HIROSE ELECTRIC CO., LTD.					