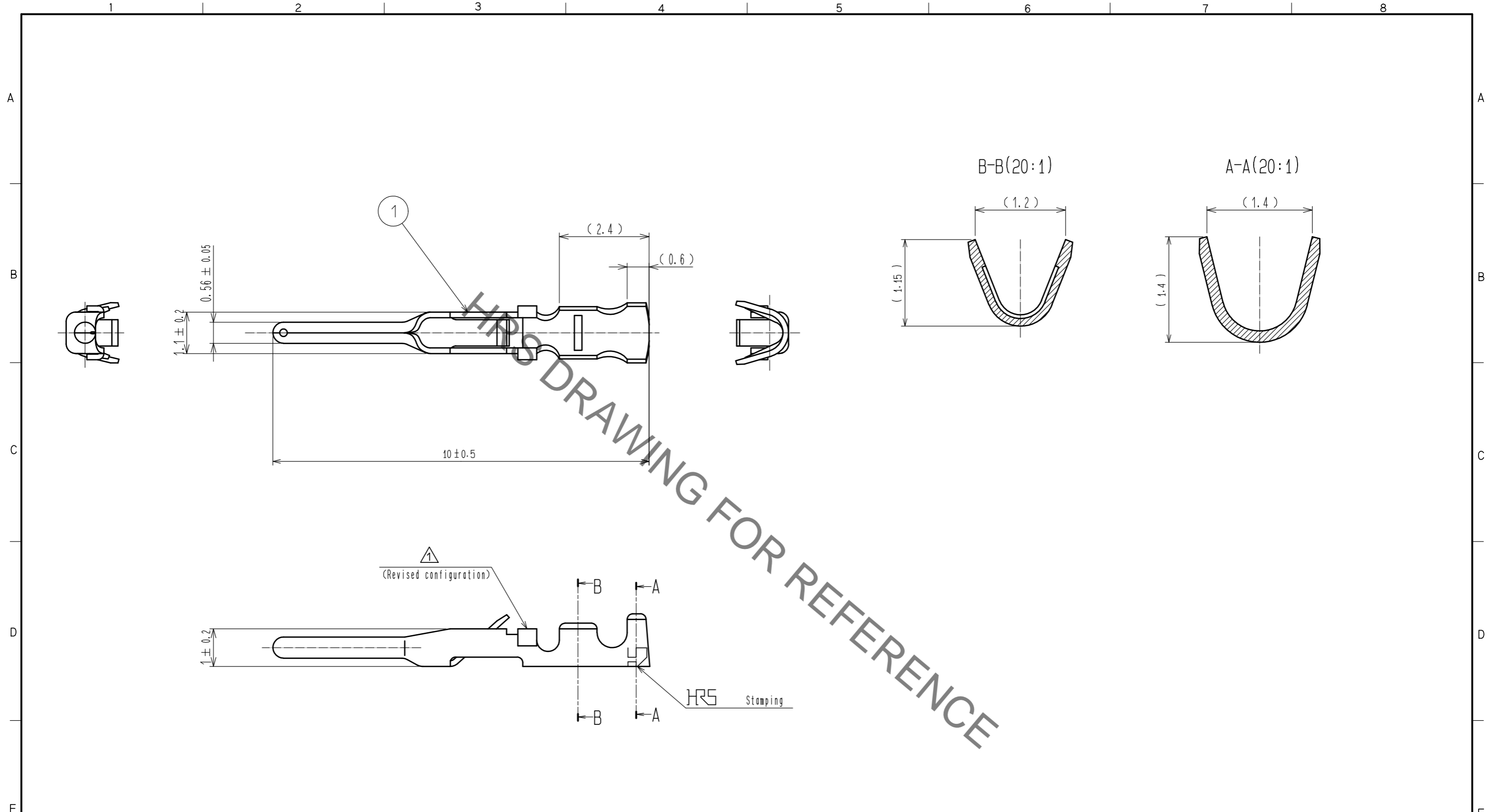


Aug.1.2021 Copyright 2021 HIROSE ELECTRIC CO., LTD. All Rights Reserved.  
 In case of consideration for using Automotive equipment / device which demand high reliability, kindly contact our sales window correspondents.



- Notes 1 Applicable wire : AGW #26~#30  
 ⚠ Hand crimping tool : HT802/HR12-SC-1(CL150-0400-3-00)

1	Phosphor bronze	Silver plated (100bulk contacts are contained per bag.)
NO.	MATERIAL	FINISH . REMARKS
UNITS mm		SCALE 10:1
		COUNT 1
		DESCRIPTION OF REVISIONS DIS-C-00000816
		DESIGNED HK. NAMAI
		CHECKED HY. KOBAYASHI
		DATE 16. 02. 23
<b>HRS</b> HIROSE ELECTRIC CO., LTD.	APPROVED : MR. YOSHIDA	05. 01. 05
	CHECKED : MO. SATOH	05. 01. 05
	DESIGNED : YH. YAMADA	05. 01. 05
	DRAWN : YH. YAMADA	05. 01. 05
	DRAWING NO.	EDC3-021603-00
	PART NO.	HR10-PC-112
	CODE NO.	CL110-0513-0-00