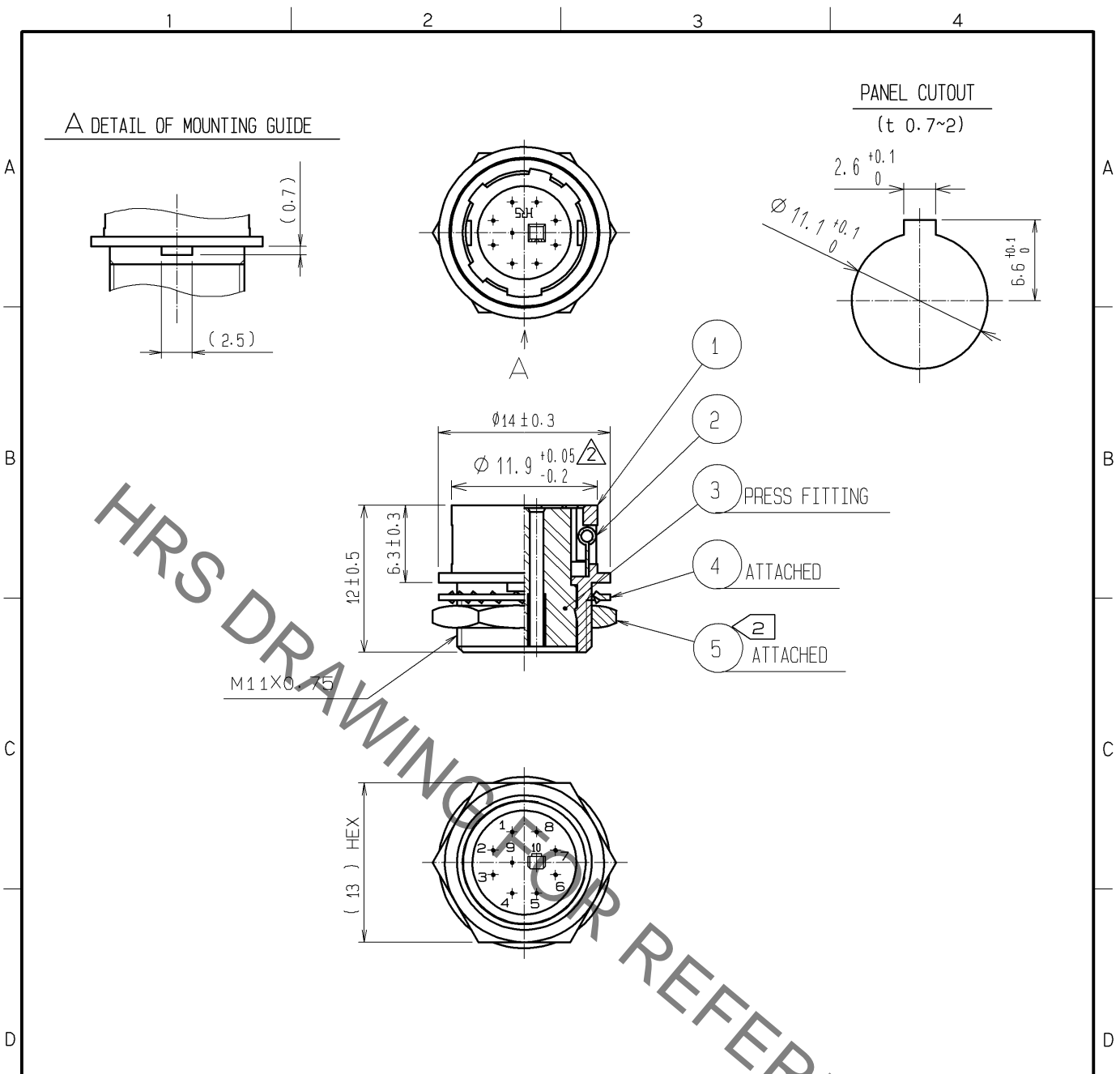


Jan.1.2022 Copyright 2022 HIROSE ELECTRIC CO., LTD. All Rights Reserved.  
In case of consideration for using Automotive equipment / device which demand high reliability, kindly contact our sales window correspondents.



NOTES 1 APPLICABLE CRIMP CONTACT:HR12-SC-212(CL112-0408-9)  
 APPLICABLE WIRE:AWG#26 TO #30(COVERED WIRE MAX. OUTSIDE DIA.Ø1)  
 APPLICABLE CONTACT REMOVAL TOOL(EXTRACTION TOOL):HR12-SC-TP(CL150-0050-3)  
 ② THE RECOMMENDED CLAMP TORQUE OF REF. NO. ⑤ TO BE 2 N·m.  
 LOCTITE 243, HENKEL JAPAN OR EQUIVALENT IS RECOMMENDED TO PREVENT REF. NO. ⑤ FROM LOOSENING.

| NO. | MATERIAL                   | FINISH, REMARKS            | NO. | MATERIAL        | FINISH, REMARKS |
|-----|----------------------------|----------------------------|-----|-----------------|-----------------|
| 3   | POLYBUTYLENE TEREPHTHALATE | (BLACK) UL94V-0            | 5   | BRASS ④         | NICKEL PLATING  |
| 2   | STAINLESS STEEL            |                            | 4   | PHOSPHOR BRONZE | NICKEL PLATING  |
| 1   | ZINC ALLOY                 | MATTE FINISH NICKEL PLATED |     |                 |                 |

| UNITS | SCALE | COUNT | DESCRIPTION OF REVISIONS | DESIGNED | CHECKED   | DATE       |
|-------|-------|-------|--------------------------|----------|-----------|------------|
| mm    | 2 : 1 | ② 2   | DIS-C-003736             | HR. SATO | HY. KISHI | 14. 11. 25 |

|                                      |                     |            |             |                    |
|--------------------------------------|---------------------|------------|-------------|--------------------|
| <b>HRS</b> HIROSE ELECTRIC CO., LTD. | APPROVED :MO. SATOH | 07. 03. 13 | DRAWING NO. | EDC4-022885-71     |
|                                      | CHECKED :EJ. KUNII  | 07. 03. 12 | PART NO.    | HR10A-10R-10SC(71) |
|                                      | DESIGNED :TO. HORII | 07. 03. 09 | CODE NO.    | CL110-0606-0-71    |
|                                      | DRAWN :MK. SATO     | 07. 03. 09 |             | ② 1/1              |