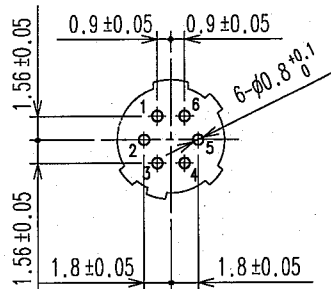


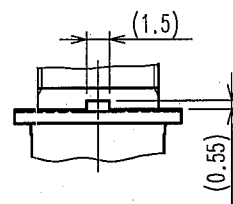
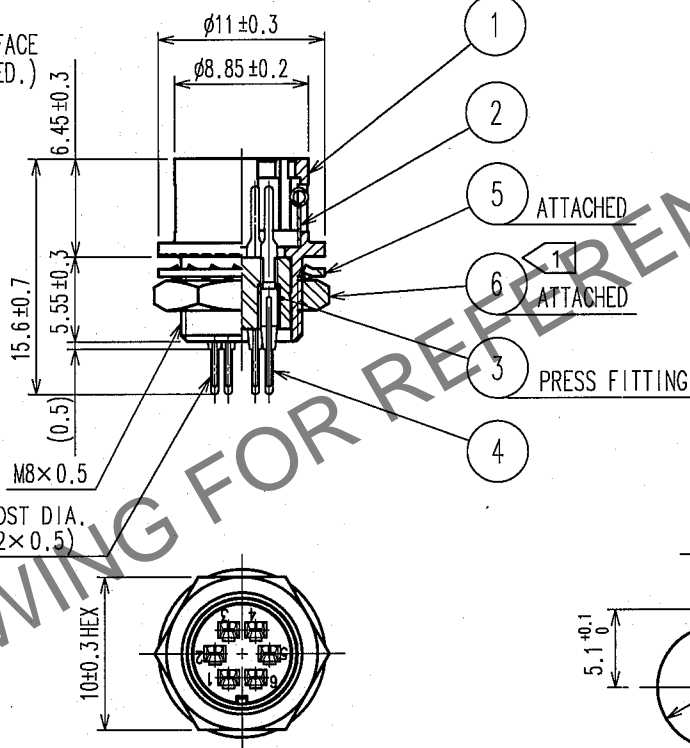
Mar.1.2024 Copyright 2024 HIROSE ELECTRIC CO., LTD. All Rights Reserved.
In case of consideration for using Automotive equipment / device which demand high reliability, kindly contact our sales window correspondents.

1			2			3			4		
	COUNT	DESCRIPTION OF REVISIONS	BY	CHKD	DATE		COUNT	DESCRIPTION OF REVISIONS	BY	CHKD	DATE
△					. .	△					. .
△						△					. .
△						△					. .

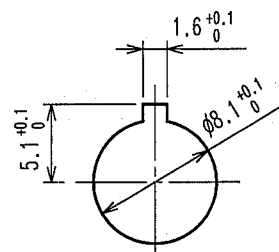


PCB LAYOUT

(INDICATES THE SIDE OF THE SURFACE TO WHICH DIP POSTS ARE INSERTED.)



A DETAIL OF MOUNTING GUIDE



PANEL CUTOUT
t 0.7~2

NOTE 1 THE RECOMMENDED CLAMP TORQUE OF REF.NO. ⑥ : 1.5N · m .
LOCTITE 242, HENKEL JAPAN OR EQUIVALENT IS RECOMMENDED TO PREVENT
REF. NO. ⑥ FROM LOOSENING.

3	PBT	(BLACK) UL94V-0	6	BRASS	NICKEL PLATING
2	STAINLESS STEEL		5	PHOSPHOR BRONZE	NICKEL PLATING
1	ZINC ALLOY	MATTE FINISH NICKEL PLATED	4	PHOSPHOR BRONZE	SILVER PLATING 2 μ m min.
NO.	MATERIAL	FINISH, REMARKS	NO.	MATERIAL	FINISH, REMARKS
CODE NO. (OLD) CL?			DRAWN	DESIGNED	CHECKED
			H.Kishi '05.08.31	H.Kishi '05.08.31	E. Kumi 05.09.02
			APPROVED M. Sato 05.09.02		
			RELEASED		
DRAWING NO. EDC4-042753-73			PART NO. HR10G-7R-6PB(73)		
SCALE 2 : 1			CODE NO. CL110-1806-4-73		
UNITS mm			1 1		

HRS

HIROSE ELECTRIC CO., LTD.