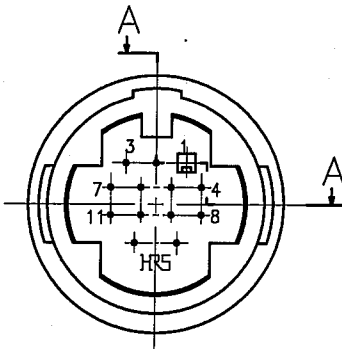
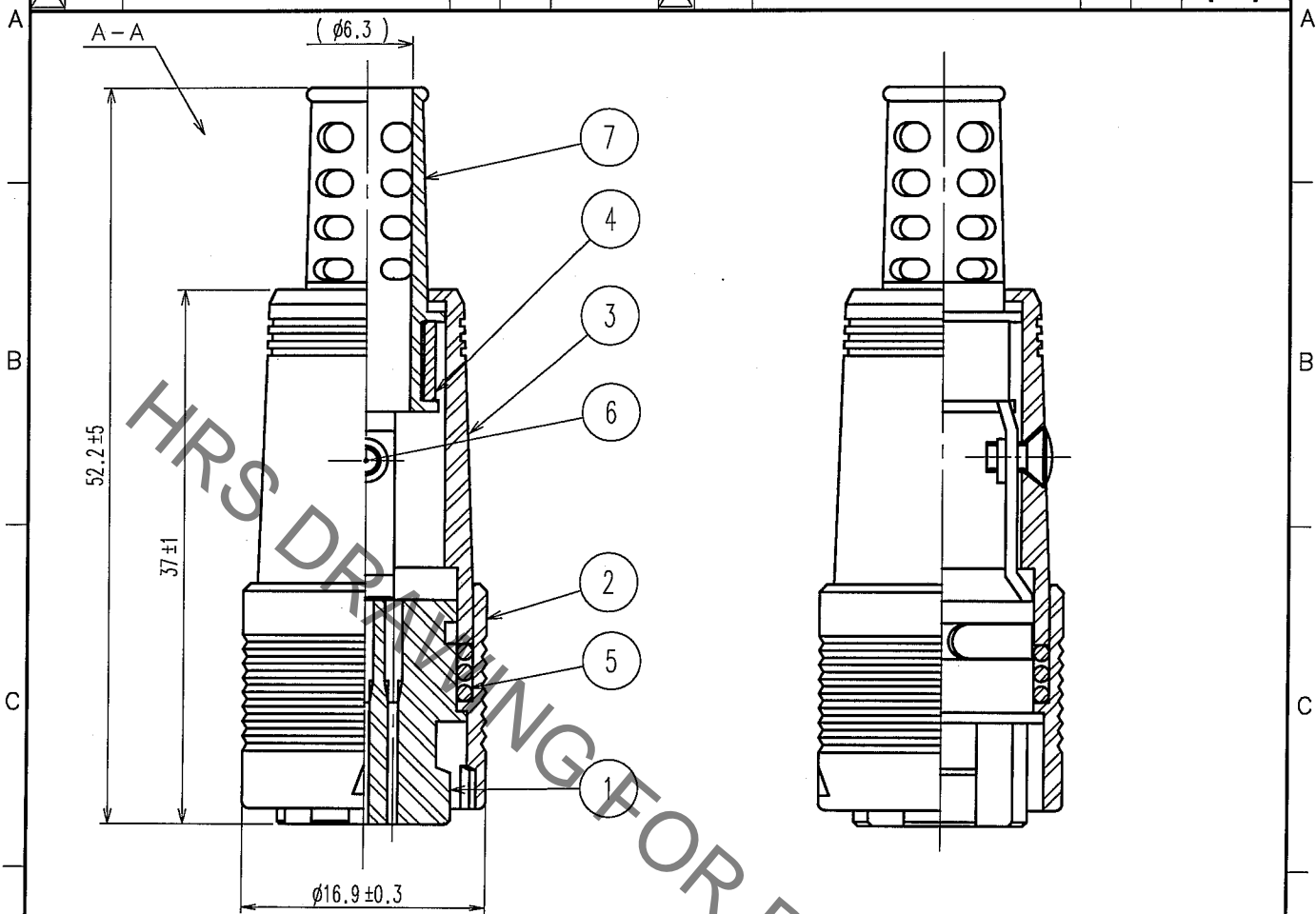


Sep.1.2021 Copyright 2021 HIROSE ELECTRIC CO., LTD. All Rights Reserved.
 In case of consideration for using Automotive equipment / device which demand high reliability, kindly contact our sales window correspondents.

1					2					3					4				
COUNT	DESCRIPTION OF REVISIONS				BY	CHKD	DATE	COUNT	DESCRIPTION OF REVISIONS				BY	CHKD	DATE				
△								△											
△								△											
△								△											



NOTE 1 ADAPT CRIMP CONTACT
 CONTACT No.1 TO 11
 RP13A-SC-222 (APPLICABLE WIRE : AWG#24 TO #28)
 CONTACT No.12,13
 RP13A-SC-212 (APPLICABLE WIRE : AWG#18 TO #22)
 2 EXTRACTION TOOL : RP13A-SC-TP
 3 APPLICABLE CLAMPING TOOL: RP13A-TC-01
 4 THIS PRODUCT IS DELIVERED DISASSEMBLE.

4	BRASS		7	FLEXIBLE POLYVINYL CHLORIDE (BLACK)	
3	POLYCARBONATE (BLACK) UL94V-0		6	BRASS (BLACK) CHROMATE TREATMENT (TRIVALENT CHROMIUM) JIS B 1111 M2x0.4x4	
2	POLYCARBONATE (BLACK) UL94V-0		5	STEEL NICKEL PLATING	
1	POLYCARBONATE (BLACK) UL94V-0				
NO.	MATERIAL	FINISH, REMARKS	NO.	MATERIAL	FINISH, REMARKS

CODE NO. (OLD) CL	DRAWN M. Ishihara 05.09.26	DESIGNED E. Yumino 05.09.26	CHECKED H. Zemba 05.09.27	APPROVED M. Sato 05.09.30	RELEASED
----------------------	----------------------------------	-----------------------------------	---------------------------------	---------------------------------	----------

 SCALE 2 : 1 UNITS mm	DRAWING NO. EDC4-009947-71	PART NO. RP13A-12PD-13SC(71)	CODE NO. CL113-0186-5-71 1/1
	HRS		
	HIROSE ELECTRIC CO., LTD.		

