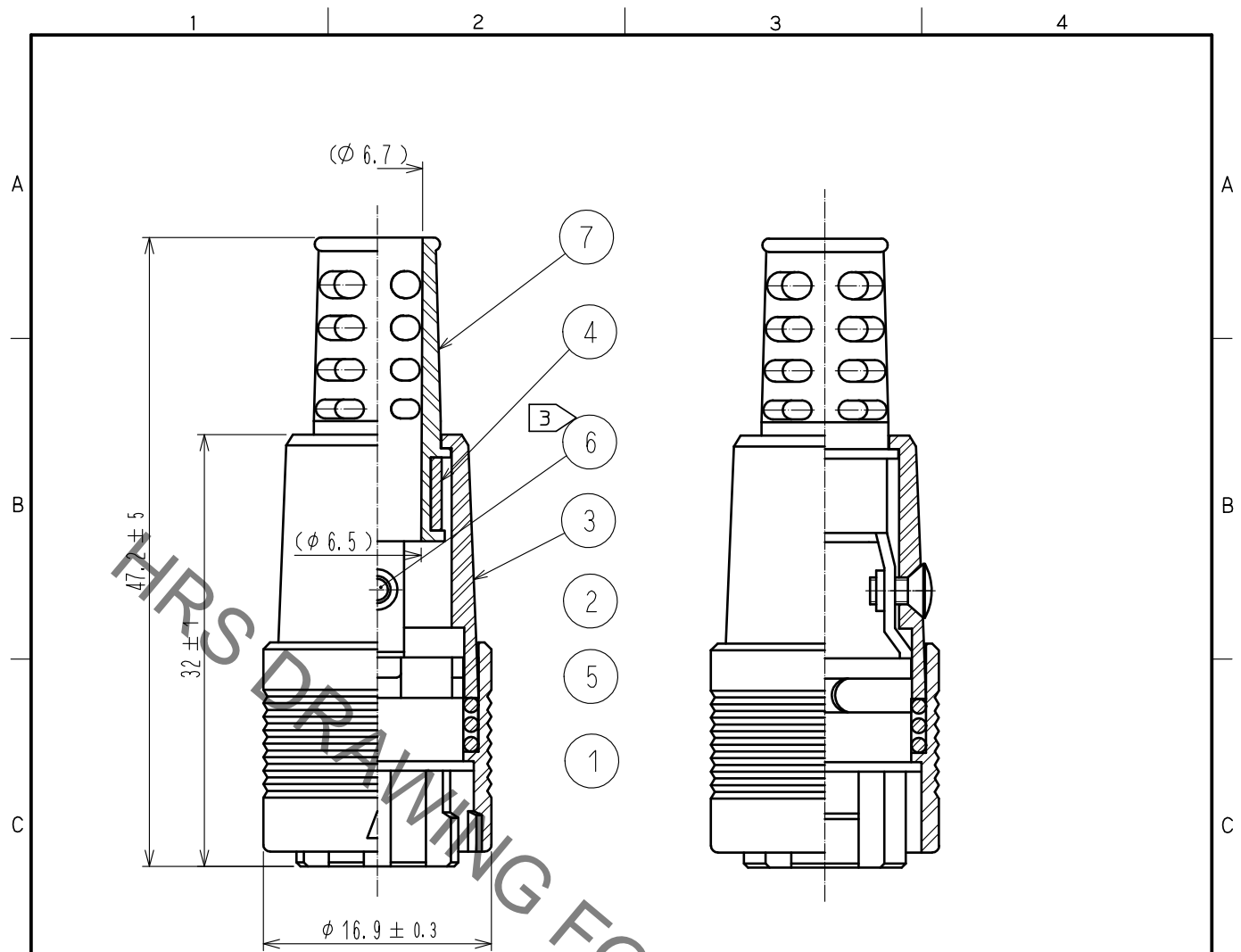
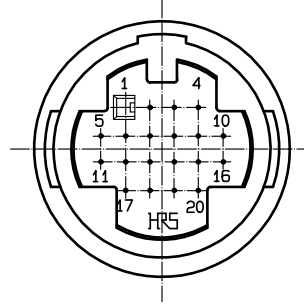


Oct.1.2021 Copyright 2021 HIROSE ELECTRIC CO., LTD. All Rights Reserved.  
 In case of consideration for using Automotive equipment / device which demand high reliability, kindly contact our sales window correspondents.



- Notes
- 1 Applicable crimping contact :  
 RP19-SC-222 (CL113-0266-2)  
 (Applicable wire AWG #24 TO #30)
  - 2 Applicable crimp contact crimping tool :  
 RP13A-TC-02 (CL150-0071-3)  
 Applicable crimp contact extraction tool :  
 RP6-SC-TP (CL150-0039-0)
  - 3 The recommended tightening torque of Ref.No. ⑥ shall be 0.2 N·m.
  - 4 This product is delivered disassembled.
  - 5 The cable pull and twisting strength and other characteristics may differ, depending on the cable structure, please confirm before the use.



4	Brass			7	Polyvinylchloride	(Black) UL94V-0	
3	Polycarbonate	(Black) UL94V-0		6	Brass	Black chromate treatment (Trivalent chromium) JIS B1111 M2×0.4×4	
2	Polycarbonate	(Black) UL94V-0		5	Steel	Nickel plating	
1	Polycarbonate	(Black) UL94V-0					
NO.	MATERIAL	FINISH	REMARKS	NO.	MATERIAL	FINISH	REMARKS

UNITS mm		SCALE 2 : 1	COUNT 	DESCRIPTION OF REVISIONS	DESIGNED	CHECKED	DATE
HIROSE ELECTRIC CO., LTD.				APPROVED :EJ. KUNII 16.05.31 CHECKED :EJ. KUNII 16.05.31 DESIGNED :MM. ISHII 16.05.31 DRAWN :MM. ISHII 16.05.31	DRAWING NO. EDC-023026-71-00 PART NO. RP13A-12PH-20SC(71) CODE NO. CL113-0217-7-71		