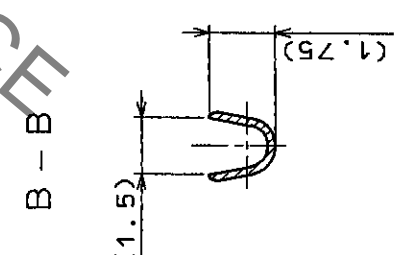
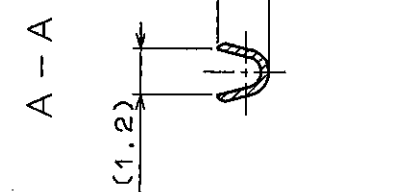
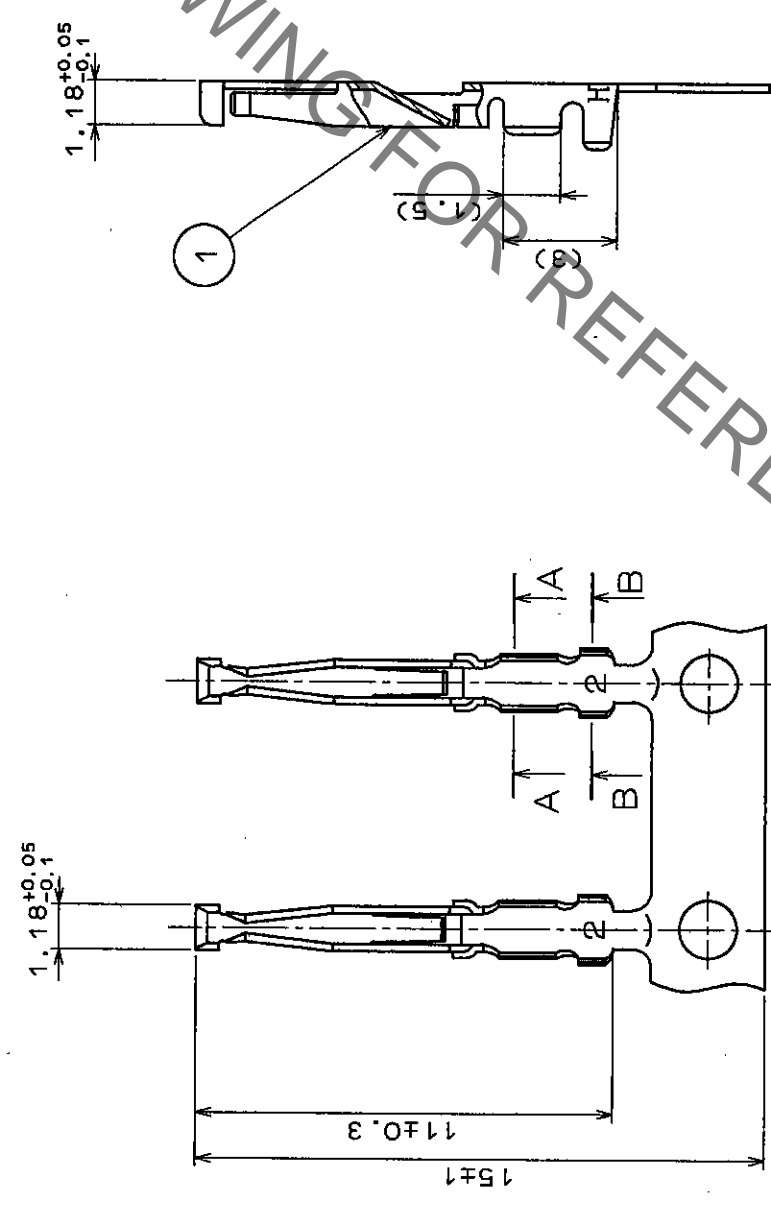
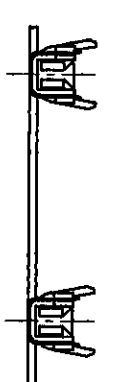
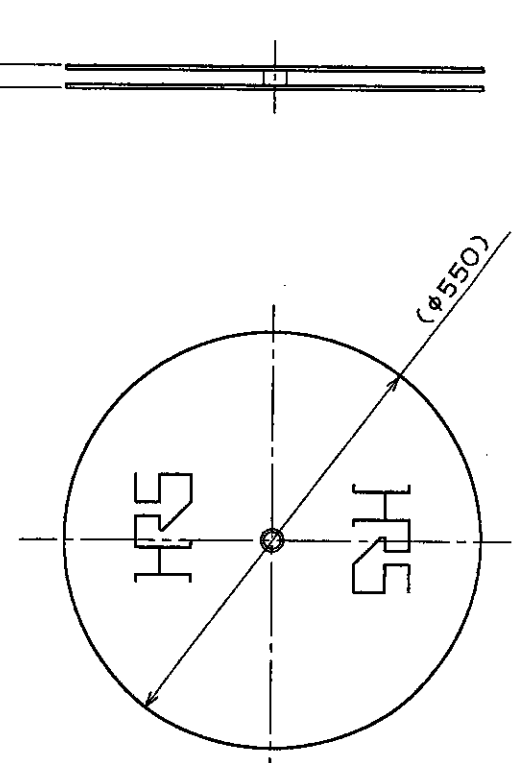


COUNT DESCRIPTION OF REVISIONS	BY	CHKD	DATE	COUNT DESCRIPTION OF REVISIONS	BY	CHKD	DATE

② REEL (10:1)



NOTE 1 APPLICABLE WIRE  
 : AWG#24~30(INSULATION DIA 1.15 MAX).  
 2 CRIMPING CONDITION AS CRIMP HEIGHT IS SPECIFIED INDIVIDUALLY DEPENDING ON WIRE USED.

NO.	PHOSPHOR BRONZE MATERIAL	SILVER PLATING (N=10000) FINISH . REMARKS	2	CARTON (REEL) MATERIAL	FINISH . REMARKS
1					

CODE NO. (OLD)	DRAWN	DESIGNED	CHECKED	APPROVED	RELEASED
	H. Kawaguchi	H. Kishi		M. Ogasawara	
	96.8.22	96.8.23		96.8.29	

DRAWING NO.	EDC3-021032	PART NO.	RP19-SC-222
SCALE	5:1	CODE NO.	CL113-0266-2
UNITS	mm		

TO	
R	