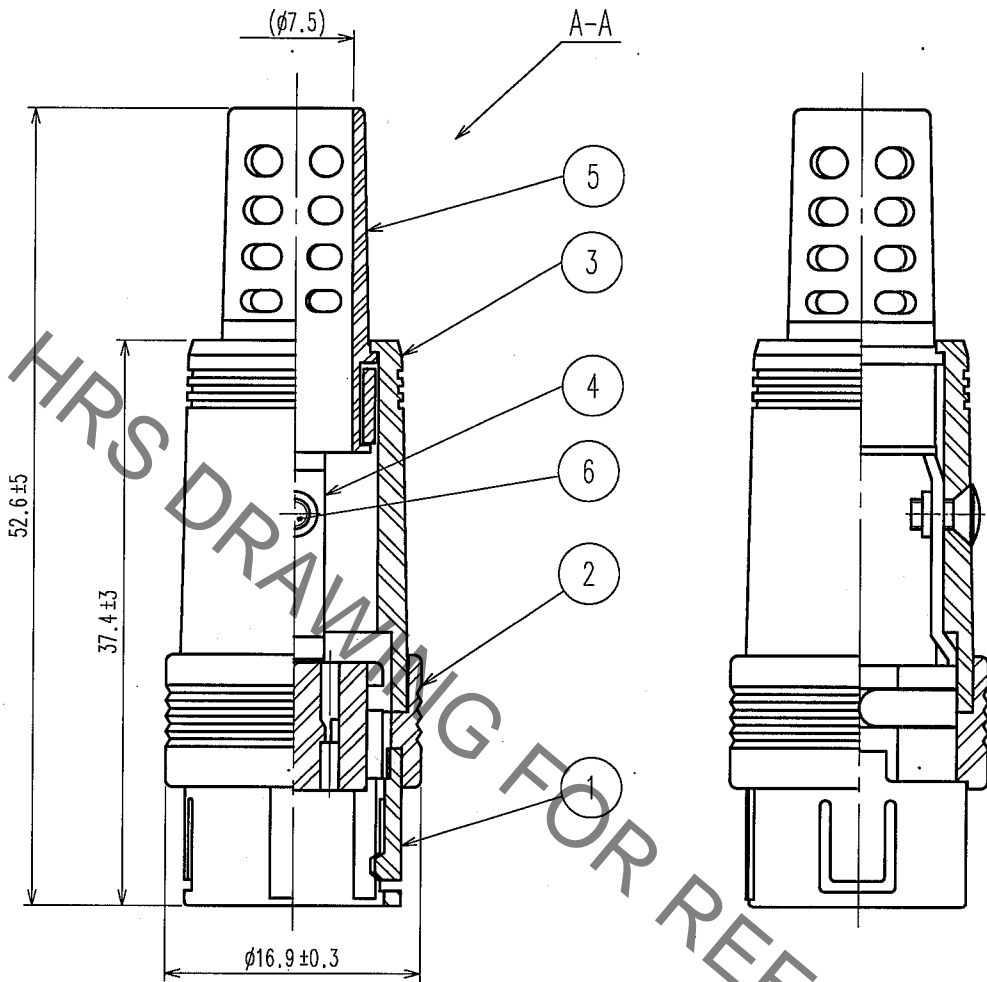


Sep.1.2021 Copyright 2021 HIROSE ELECTRIC CO., LTD. All Rights Reserved.
 In case of consideration for using Automotive equipment / device which demand high reliability, kindly contact our sales window correspondents.

1		2			3			4		
COUNT	DESCRIPTION OF REVISIONS	BY	CHKD	DATE	COUNT	DESCRIPTION OF REVISIONS	BY	CHKD	DATE	
△					△					
△					△					
△					△					



NOTE 1 APPLICABLE CRIMP CONTACT:
 RP19-PC-222(CL113-0264-7)
 THIS CONTACT IS FOR
 APPLICABLE CABLE AWG#24 TO 30.
 2 APPLICABLE CRIMP CONTACT EXTRACTION TOOL:
 RP6-SC-TP(CL150-0039-0)
 3 THIS PRODUCT IS DELIVERED DISASSEMBLED.

NO.	MATERIAL	FINISH, REMARKS	NO.	MATERIAL	FINISH, REMARKS
3	POLYCARBONATE	(BLACK) UL94V-0	6	BRASS	(BLACK) CHROMATE TREATMENT (TRIVALENT CHROMIUM) JIS B 1111 M2×0.4×4
2	POLYCARBONATE	(BLACK) UL94V-0	5	FLEXIBLE POLYVINYL CHLORIDE	(BLACK)
1	POLYCARBONATE	(BLACK) UL94V-0	4	BRASS	

CODE NO. (OLD) CL	DRAWN M. Ishihara	DESIGNED E. Yumino	CHECKED H. Zemba	APPROVED M. Sato	RELEASED
	05.09.26	05.09.26	05.09.27	05.09.28	

DRAWING NO. EDC4-026034-71 HIROSE ELECTRIC CO., LTD.	PART NO. RP13A-12JG-20PC(71) CODE NO. CL113-1004-1-71	1 1
--	--	--------