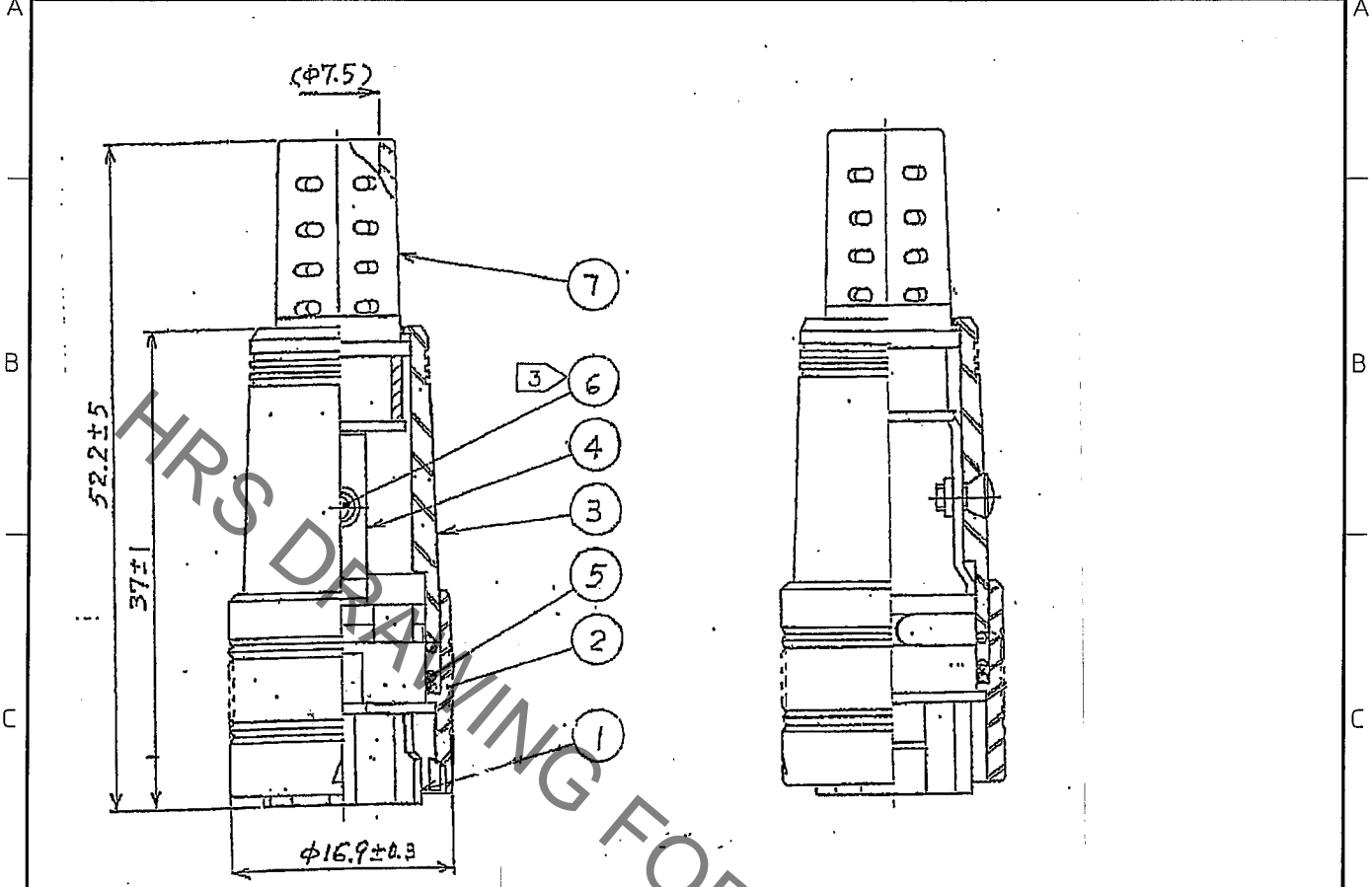


Oct.1.2021 Copyright 2021 HIROSE ELECTRIC CO., LTD. All Rights Reserved.
 In case of consideration for using Automotive equipment / device which demand high reliability, kindly contact our sales window correspondents.

1		2			3			4		
COUNT	DESCRIPTION OF REVISIONS	BY	CHKD	DATE	COUNT	DESCRIPTION OF REVISIONS	BY	CHKD	DATE	
△					△					
△					△					
△					△					



- NOTES. 1 APPLICABLE CRIMP CONTACT:
 RP13A-SC-222(CL113-0151-0)
 THIS CONTACT IS FOR
 APPLICABLE CABLE AWG#24 TO 28 OR EQUIVALENT.
- 2 APPLICABLE CRIMP CONTACT CRIMPING TOOL:
 RP13A-TC-01(CCL150-0070-0)
 APPLICABLE CRIMP CONTACT EXTRACTION TOOL:
 RP13A-SC-TPCCL150-0022-8)
- ③ THE RECOMMENDED CLAMP TORQUE OF REF. NO. ⑥ TO 0.2N·m.
- 4 THIS PRODUCT IS DELIVERED DISASSEMBLED.
- 5 THE CABLE CLAMP STRENGTH, ROTATION STRENGTH AND OTHER
 PLEASE CONFIRM BEFORE THE USE.

4	BRASS			7	FLEXIBLE POLYVINYL CHLORIDE	(BLACK)
3	POLYCARBONATE	(BLACK) UL94V-0		6	BRASS	(BLACK) CHROMATE TREATMENT (TRIVALENT CHROMIUM) JIS B 1111 M2X0.4X3
2	POLYCARBONATE	(BLACK) UL94V-0		5	STEEL	NICKEL PLATING
1	POLYCARBONATE	(BLACK) UL94V-0				
NO.	MATERIAL	FINISH, REMARKS		NO.	MATERIAL	FINISH, REMARKS

CODE NO.(OLD) CL	DRAWN W.Ajiro	DESIGNED H.Kawashima	CHECKED M.Kobayashi	APPROVED M.Sato	RELEASED
	'08.10.30	'08.10.31	'08.10.31	'08.10.31	

SCALE 2:1	DRAWING NO. EDC4-028550-71	PART NO. RP13A-12PP-15SC(71)
	UNITS mm	CODE NO. CL113-1010-4-71