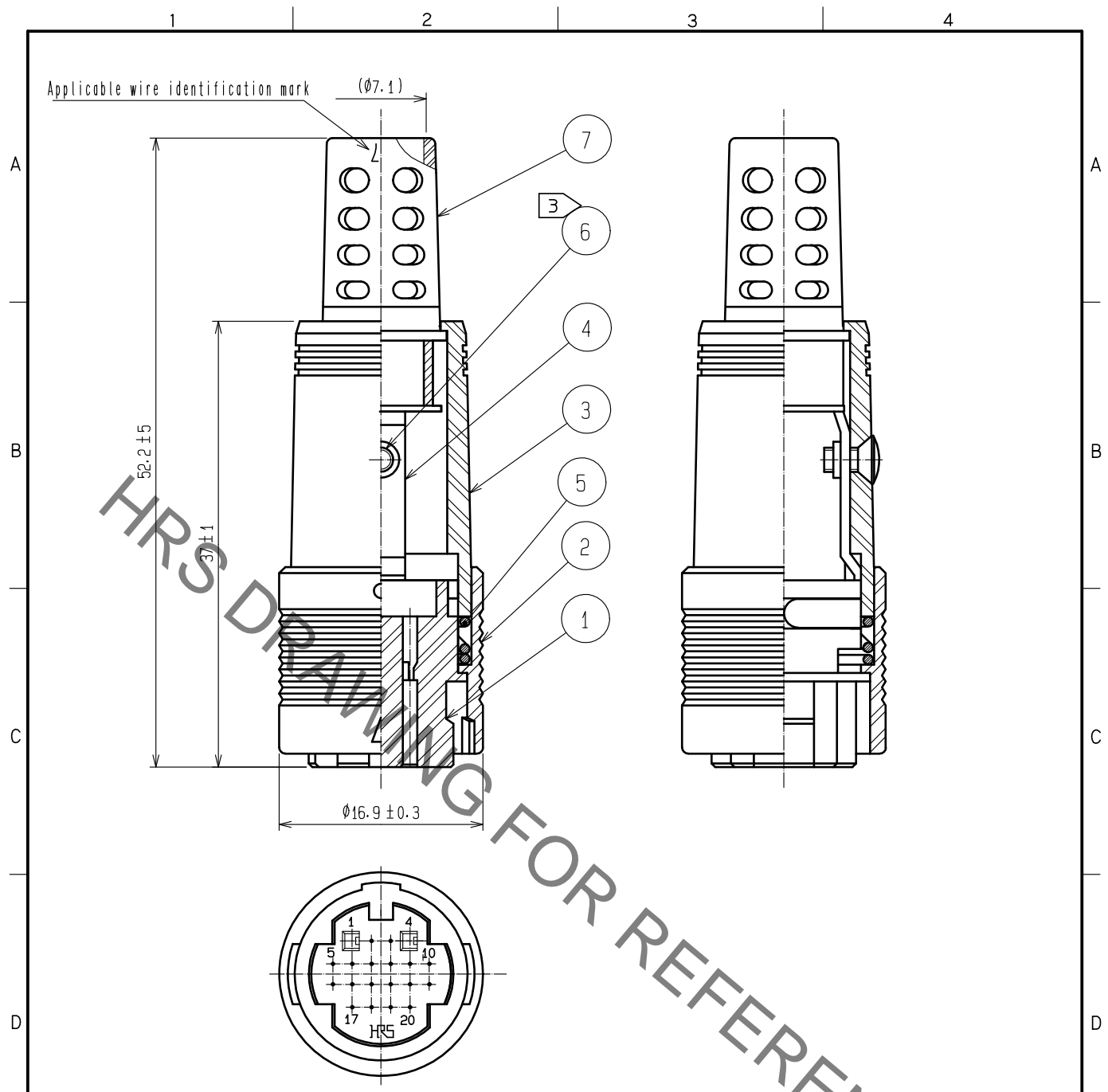


Oct.1.2021 Copyright 2021 HIROSE ELECTRIC CO., LTD. All Rights Reserved.
In case of consideration for using Automotive equipment / device which demand high reliability, kindly contact our sales window correspondents.



- Notes
- 1 Applicable crimping contact : RP19-SC-222(CL113-0266-2)
(Applicable wire :AWG #24 to #28)
 - 2 Applicable crimp contact crimping tool : RP13A-TC-01(CL150-0070-0)
Applicable crimp contact extraction tool : RP6-SC-TP(CL150-0039-0)
 - 3 The recommended tightening torque of Ref.No. ③ shell be 0.2N · m.
 - 4 This product is delivered disassemble.
 - 5 The cable pull and twisting strength and other characteristics may differ,
Depending on the cable structure.please confirm before the use.

4	Brass			7	Flexible polyvinylchloride	(Black)
3	Polycarbonate	(Black)	UL94V-0	6	Brass	Black chromate treatment(Trivalent chromium) JIS B1111 M2×0.4×4
2	Polycarbonate	(Black)	UL94V-0	5	Steel	Nickel plating
1	Polycarbonate	(Black)	UL94V-0			
NO.	MATERIAL	FINISH	REMARKS	NO.	MATERIAL	FINISH . REMARKS

UNITS mm		SCALE 2 : 1	COUNT 	DESCRIPTION OF REVISIONS	DESIGNED	CHECKED	DATE
HIROSE ELECTRIC CO., LTD.				APPROVED :EJ. KUNII 16.03.23 CHECKED :EJ. KUNII 16.03.23 DESIGNED :MM. ISHII 16.03.23 DRAWN :MM. ISHII 16.03.23	DRAWING NO. EDC-028674-71-00 PART NO. RP13A-12PK-20SC(71) CODE NO. CL113-1012-0-71	1/1	