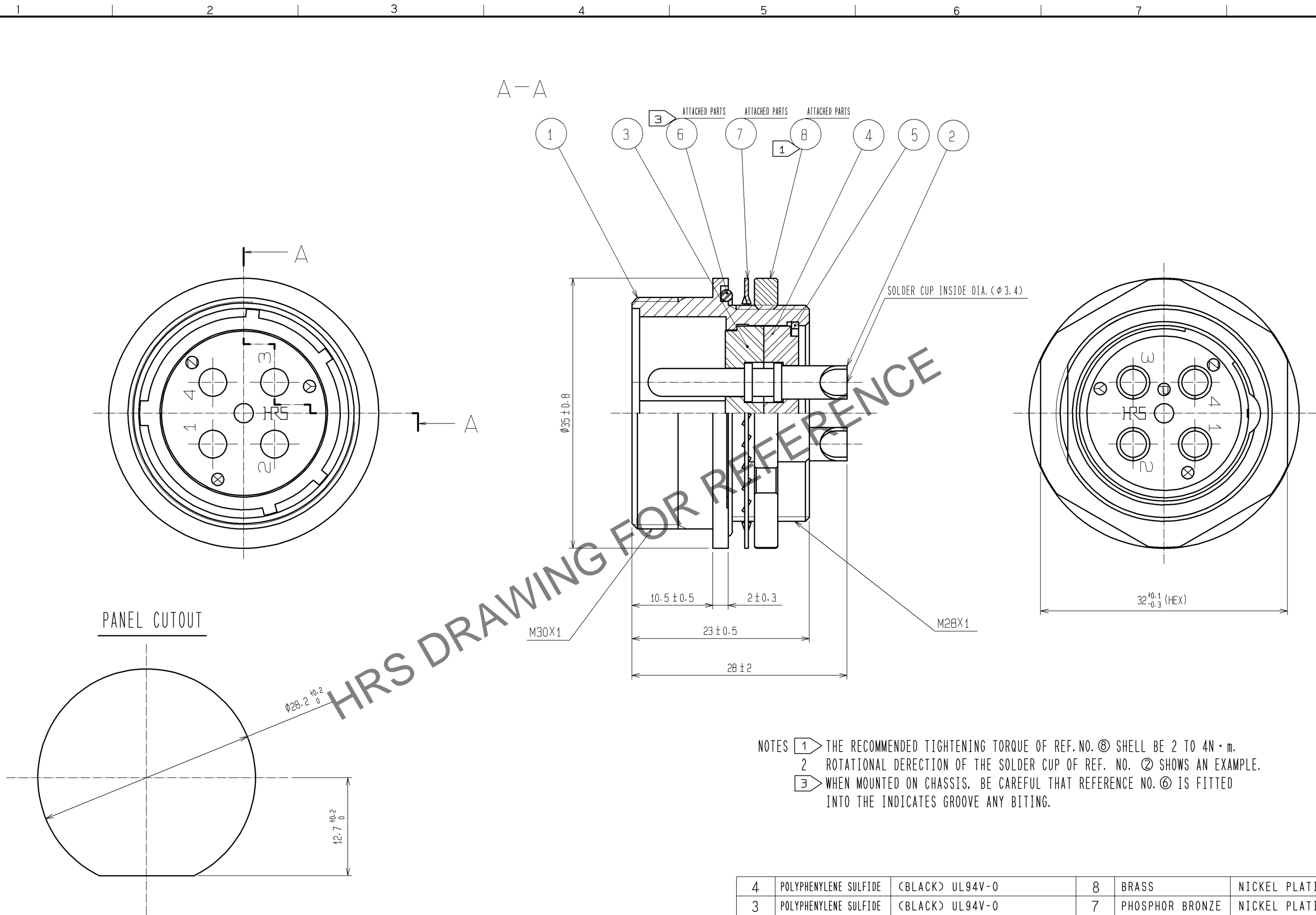
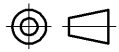





May.1.2024 Copyright 2024 HIROSE ELECTRIC CO., LTD. All Rights Reserved.  
In case of consideration for using Automotive equipment / device which demand high reliability, kindly contact our sales window correspondents.



- NOTES
- 1 THE RECOMMENDED TIGHTENING TORQUE OF REF. NO. ⑧ SHALL BE 2 TO 4N · m.
  - 2 ROTATIONAL DIRECTION OF THE SOLDER CUP OF REF. NO. ② SHOWS AN EXAMPLE.
  - 3 WHEN MOUNTED ON CHASSIS, BE CAREFUL THAT REFERENCE NO. ⑥ IS FITTED INTO THE INDICATES GROOVE ANY BITING.

4	POLYPHENYLENE SULFIDE	(BLACK) UL94V-0	8	BRASS	NICKEL PLATING
3	POLYPHENYLENE SULFIDE	(BLACK) UL94V-0	7	PHOSPHOR BRONZE	NICKEL PLATING
2	BRASS	SILVER PLATING 2μm min.	6	SILICONE RUBBER	(BLACK)
1	ZINC ALLOY	BLACK CHROME PLATING	5	PHOSPHOR BRONZE	NICKEL PLATING
NO.	MATERIAL	FINISH , REMARKS	NO.	MATERIAL	FINISH , REMARKS

UNITS mm		SCALE 2 : 1		COUNT	DESCRIPTION OF REVISIONS	DESIGNED	CHECKED	DATE
 HIROSE ELECTRIC CO., LTD.		APPROVED : EJ. KUNII		13. 09. 09	DRAWING NO.	EDC3-118117-00		
		CHECKED : HY. KISHI		13. 09. 09	PART NO.	JR25WRHA-4P		
		DESIGNED : HK. NAMAI		13. 09. 09	CODE NO.	CL114-1136-9-00		
		DRAWN : HK. NAMAI		13. 09. 09	 1/1			