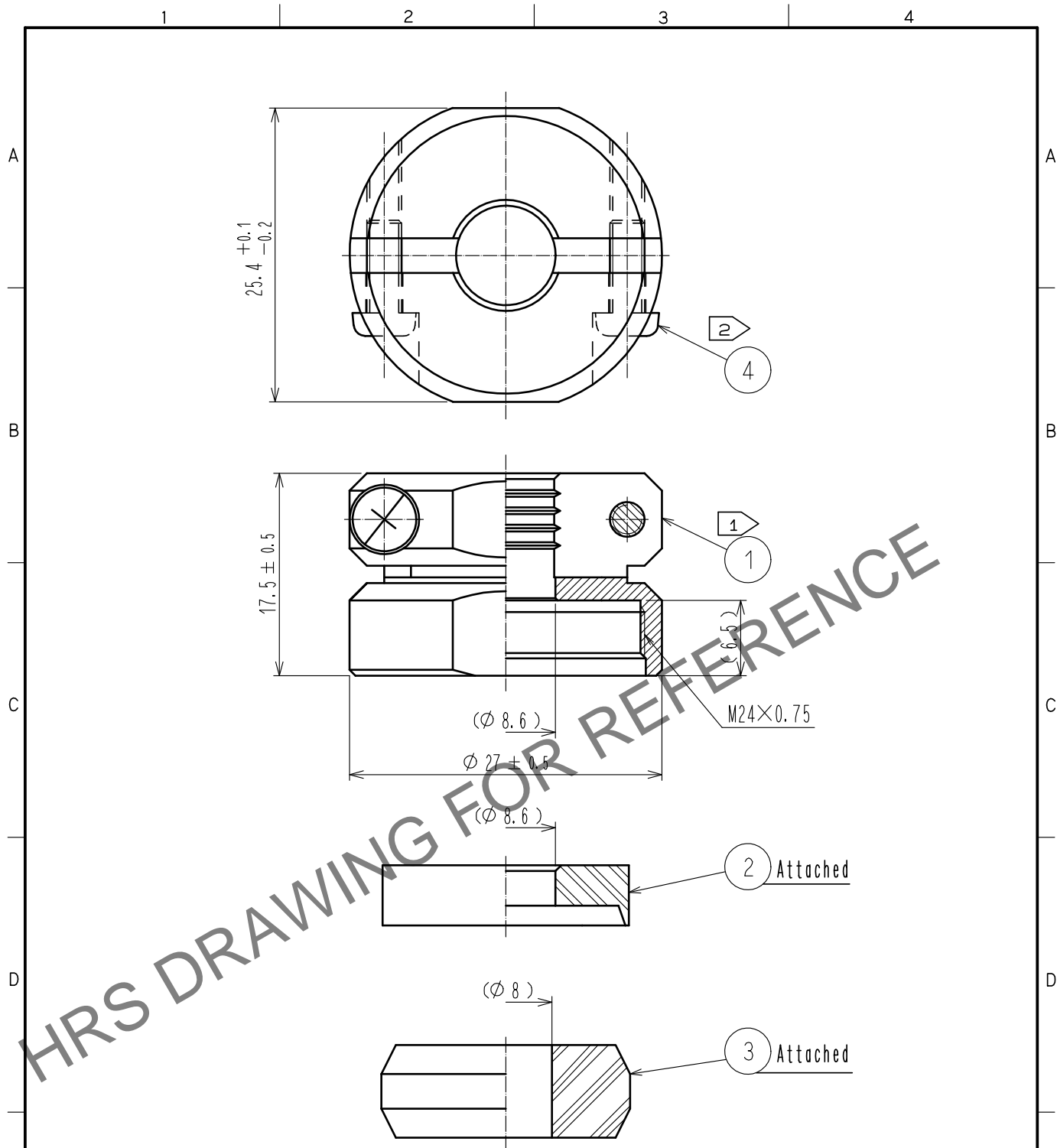






Jun.1.2024 Copyright 2024 HIROSE ELECTRIC CO., LTD. All Rights Reserved.  
In case of consideration for using Automotive equipment / device which demand high reliability, kindly contact our sales window correspondents.



- Notes
- 1 The recommended clamp torque of ref. No. ① : 4 to 4.5 N · m .  
LOCTITE 263, HENKEL JAPAN or equivalent is recommended to prevent  
ref. No. ① from loosening.
  - 2 The recommended clamp torque of ref. No. ④ to be 0.65 to 0.7 N · m .
  3. The cable pull and twisting strength, waterproof tightness and other characteristics  
may differ, depending on the cable structure. Please confirm before the use.

2	PPS	( Black ) UL94V-0		4	Stainless steel	M3×0.5×8					
1	Brass	Black chrome plating		3	Acrylonitrile butadiene rubber	( Grey )					
NO.	MATERIAL	FINISH . REMARKS		NO.	MATERIAL	FINISH . REMARKS					
UNITS mm		SCALE 2 : 1		COUNT	DESCRIPTION OF REVISIONS		DESIGNED	CHECKED	DATE		
 HIROSE ELECTRIC CO., LTD.		APPROVED		HY. KOBAYASHI		18. 02. 26		DRAWING NO.		EDC-110609-31-00	
		CHECKED		HY. KOBAYASHI		18. 02. 26		PART NO.		JR21WCC-8(31)	
		DESIGNED		TH. KAMEYA		18. 02. 23		CODE NO.		CL114-2058-2-31	
		DRAWN		MK. INOUE		18. 02. 14				1/	