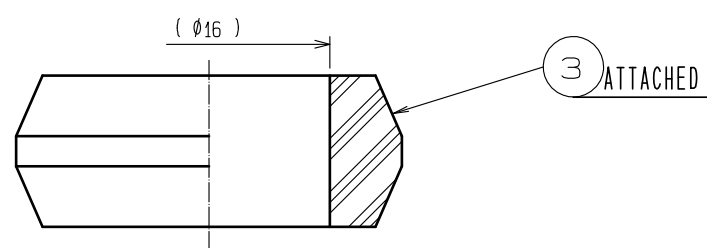
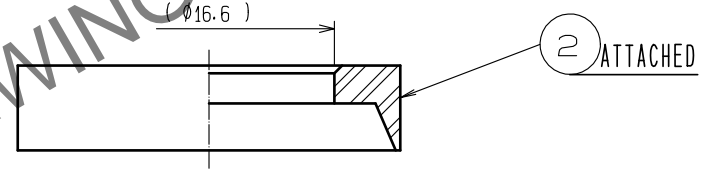
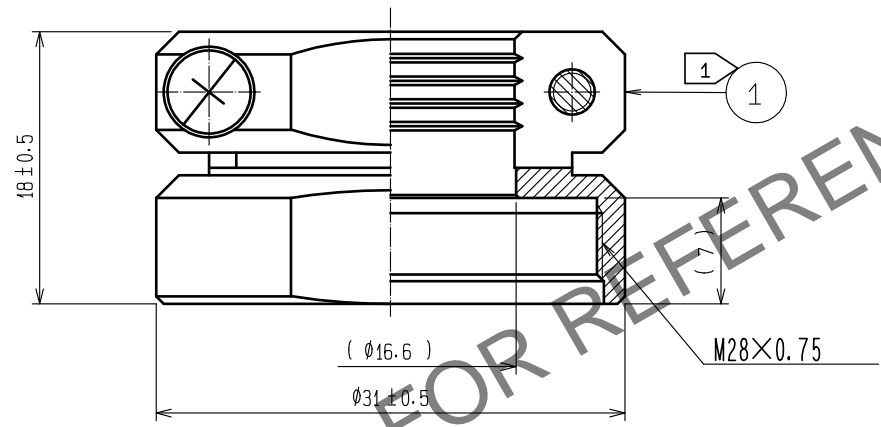
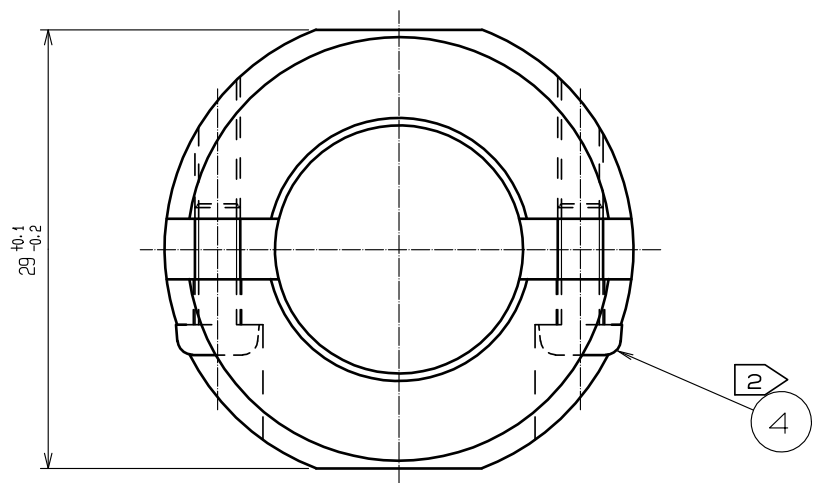
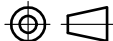


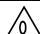


May.1.2024 Copyright 2024 HIROSE ELECTRIC CO., LTD. All Rights Reserved.
In case of consideration for using Automotive equipment / device which demand high reliability, kindly contact our sales window correspondents.

HRS DRAWING FOR REFERENCE



- NOTES
- 1 THE RECOMMENDED CLAMP TORQUE OF REF.NO. ① TO BE 5 TO 5.5 N ·m.
LOCTITE 263, HENKEL JAPAN OR EQUIVALENT IS RECOMMENDED TO PREVENT REF.NO. ① FROM LOOSENING.
 - 2 THE RECOMMENDED CLAMP TORQUE OF REF.NO. ② TO BE 0.65 TO 0.7 N ·m.
 - 3 THE CABLE PULL AND TWISTING STRENGTH AND OTHER CHARACTERISTICS MAY DIFFER, DEPENDING ON THE CABLE STRUCTURE. PLEASE CONFIRM BEFORE THE USE.

2	PPS	(BLACK) UL94V-0		4	STAINLESS STEEL	M3X0.5X8		
1	BRASS	BLACK CHROME PLATING		3	ACRYLONITRILE BUTADIENE RUBBER	(GRAY)		
NO.	MATERIAL	FINISH , REMARKS			NO.	MATERIAL	FINISH , REMARKS	
UNITS mm		SCALE 2 : 1		COUNT	DESCRIPTION OF REVISIONS	DESIGNED	CHECKED	DATE
 HIROSE ELECTRIC CO., LTD.			APPROVED :HY. KOBAYASHI		18. 02. 26	DRAWING NO. EDC-110617-31-00		
			CHECKED :HY. KOBAYASHI		18. 02. 26	PART NO. JR25WCC-16(31)		
			DESIGNED :TH. KAMEYA		18. 02. 23	CODE NO. CL114-2067-3-31		
			DRAWN :MK. INOUE		18. 02. 14	 1		